



# By the Yard

MAINTENANCE-FREE  
OUTDOOR FURNITURE

bytheyard.net | 952-219-7070

# TABLE OF CONTENTS

Features & Benefits .....	3	Lounges, Swings, Rockers .....	70
13 UV-Stabilized Colors .....	5	Benches .....	74
Chairs .....	6	Engraving .....	79
Tables .....	22	Garden .....	80
Adirondacks .....	34	Storage & Service .....	84
Tete-a-Tetes .....	40	Accent Tables & Accessories .....	88
Gliders .....	44	Pet .....	92
Fire Tables.....	60	Umbrellas .....	94
Cushion Furniture.....	64	Warranty & Delivery .....	98



# OUTDOOR FURNITURE BUILT THE WAY IT SHOULD BE.

We believe outdoor furniture should earn its place in your life. It should feel solid, steady, and comfortable every time you sit down. It should look good season after season. And it should be built by people who take pride in doing things the right way. That standard guides every piece we make.

## *American Craft. Ready for Real-World Weather.*

We build our furniture in Minnesota, where the weather is never neutral. Long winters, strong sun, humidity, and big temperature swings shape how we design and engineer each piece. That approach has been proven for more than 30 years in climates across the country. From the heat and sun of Texas to coastal salt air, our materials and construction methods are chosen for stable performance in demanding environments.

## ENGINEERED FOR THE LONG VIEW

We refine each design for consistent comfort and reliable performance. Heavy-gauge aluminum supports key pieces. Premium 316 stainless steel hardware adds stability, and color matched finishes help maintain a clean, cohesive appearance. Every detail has a purpose.

## *Premium HDPE, Decades in the Making.*

Our proprietary poly lumber resists moisture, stands up to the elements, and cleans easily. The color goes through, so normal wear stays discreet. By controlling both the material and the process, we create furniture that feels substantial and dependable without demanding ongoing upkeep.

## *Built One Order at a Time.*

Your furniture is made for you by craftspeople who measure, assemble, finish, and inspect each piece with care. It takes more time, but it creates consistency and pride that mass production cannot match. What this adds up to is simple. Furniture that stands up to the elements. Comfort you can count on. A long-term upgrade to your outdoor space.

*With By the Yard, life is better outdoors!*



# BETTER BY DESIGN, BUILT FOR YOU

Quality and attention to details that you can *SEE* and *FEEL*.



Maintenance-free



No painting - *EVER*



Easy clean



All weather - no winter storage



UV-stabilized lumber & colors



Sustainably Recycled Plastic



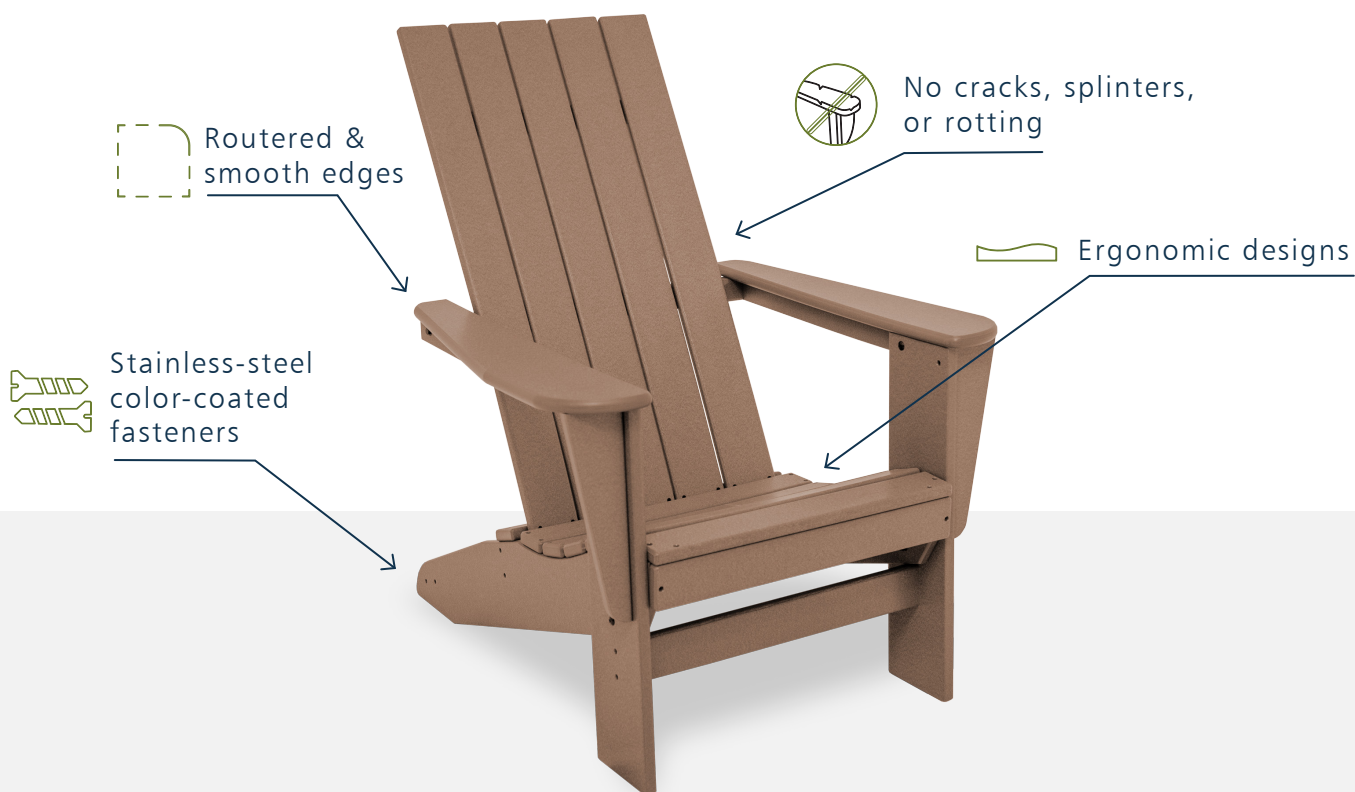
Bleach Cleanable



Marine Grade



Operational Savings



Find our newest products online.

We've added even more to our collection! Visit our site to shop our newest styles for 2026.

# DESIGNED TO LOOK GOOD. BUILT TO HOLD UP.

## 13 UV-Protected Colors

Over 600 styles and designs available in 13 colors with hundreds of color combinations available.

## Standard Two-Tone Combinations

Balanced, intentional pairings that highlight each piece without feeling busy or trend-driven.

## See the Colors in Your Space

Over 600 styles and designs available in 13 colors with hundreds of color combinations available.



Get color samples.

Scan the QR code to visit [bytheyard.net](http://bytheyard.net) or call 952-219-7070.

## Coverage You Can Count On — 15-Year Commercial Warranty

Warranty coverage that reflects decades of experience building furniture for real outdoor use.



Woodgrains

NEW!

Weathered Birch

Dark Oak

Grayed Ash

White

Sandtone

Weathered Wood

Brown

Redwood

Green

Gray

Coffee

Midnight Blue

Black

Solid Colors

Standard Two-Tones

Gray & Sandtone

Coffee & Brown

Sandtone & Black

Weathered Wood & Coffee

Gray & Black

\*Premium wood grain colors priced above base— contact us for details.



Bar Counter Armless Villa Chair | Sandtone | BAVC | P. 18  
Bar 36" Heritage Square Table | Sandtone-Coffee | CNST36 | P. 28

## STEP 1

# CHOOSE A BACK STYLE

Back design influences comfort and posture across a wide range of users. More supportive backs work well for dining and extended seating, while simpler profiles are well suited for higher-traffic environments.



## STEP 2

# CHOOSE A CHAIR HEIGHT

Motion affects stability, durability, and space efficiency: stationary chairs deliver consistent performance, while swivel and swivel-flex options enhance access and comfort.



## STEP 3

# CHOOSE YOUR MOTION

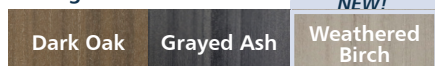
Seat height shapes accessibility and circulation, dining height offers the most flexibility, while counter and bar heights suit defined spaces with elevated sightlines.



## STEP 4

# CHOOSE A COLOR

### Woodgrain Colors



\*Premium wood grain colors priced above base — contact us for details.

### Solid Colors



## DAYS END CHAIRS



### Dining Days End Stationary

S | 37 lbs | 46"H x 26"W x 30"D | JFKC-20  
W | 39 lbs | 46"H x 28"W x 30"D | JFKC

\$399



### Dining Days End Swivel

S | 54 lbs | 46"H x 26"W x 30"D | JFKC-20-SW  
W | 56 lbs | 46"H x 28"W x 30"D | JFKC-SW

\$509



### Dining Days End Swivel-Flex

S | 62 lbs | 46"H x 26"W x 30"D | JFKC-20-SWRK  
W | 64 lbs | 46"H x 28"W x 30"D | JFKC-SWRK

\$569

## MISSION CHAIRS



### Dining Mission Stationary

S | 37 lbs | 45"H x 26"W x 30"D | MSDC-20  
W | 39 lbs | 45"H x 28"W x 30"D | MSDC

\$399



### Dining Mission Swivel

S | 53 lbs | 45"H x 26"W x 30"D | MSDC-20-SW  
W | 55 lbs | 45"H x 28"W x 30"D | MSDC-SW

\$509



### Dining Mission Swivel-Flex

S | 61 lbs | 45"H x 26"W x 30"D | MSDC-20-SWRK  
W | 63 lbs | 45"H x 28"W x 30"D | MSDC-SWRK

\$569

## WINDSOR CHAIRS



### Dining Windsor Stationary

S | 40 lbs | 46"H x 26"W x 30"D | WDC-20  
W | 42 lbs | 46"H x 28"W x 30"D | WDC

\$399



### Dining Windsor Swivel

S | 48 lbs | 46"H x 26"W x 30"D | WDC-20-SW  
W | 50 lbs | 46"H x 28"W x 30"D | WDC-SW

\$509



### Dining Windsor Swivel-Flex

S | 59 lbs | 46"H x 26"W x 30"D | WDC-20-SWRK  
W | 61 lbs | 46"H x 28"W x 30"D | WDC-SWRK

\$569

## DAY BREAK CHAIRS



### Dining Day Break Stationary

S | 35 lbs | 37"H x 26"W x 28"D | DBC-20  
W | 37 lbs | 37"H x 28"W x 28"D | DBC

\$399



### Dining Day Break Swivel

S | 49 lbs | 37"H x 26"W x 28"D | DBC-20-SW  
W | 51 lbs | 37"H x 28"W x 28"D | DBC-SW

\$509



### Dining Day Break Swivel-Flex

S | 54 lbs | 37"H x 26"W x 28"D | DBC-20-SWRK  
W | 56 lbs | 37"H x 28"W x 28"D | DBC-SWRK

\$569



### Counter Day Break Stationary

40 lbs | 46"H x 26"W x 30"D | CNDBC

\$429



### Counter Day Break Swivel

55 lbs | 46"H x 26"W x 30"D | CNDBC-SW

\$529



### Counter Day Break Swivel-Flex

60 lbs | 46"H x 26"W x 30"D | CNDBC-SWRK

\$579



### Bar Day Break Stationary

42 lbs | 50"H x 26"W x 30"D | BDDBC

\$439



### Bar Day Break Swivel

60 lbs | 50"H x 26"W x 30"D | BDDBC-SW

\$539



### Bar Day Break Swivel-Flex

65 lbs | 50"H x 26"W x 30"D | BDDBC-SWRK

\$589

Choose between our dining height standard width, the top choice for most settings, or the wide option for a roomier, more relaxed seating experience. Both are designed to deliver exceptional comfort and style.

## HORIZON CHAIRS



### Dining Horizon Stationary

S | 40 lbs | 39"H x 26"W x 28"D | HZC-20  
W | 42 lbs | 39"H x 28"W x 28"D | HZC

\$399



### Dining Horizon Swivel

S | 48 lbs | 39"H x 26"W x 28"D | HZC-20-SW  
W | 50 lbs | 39"H x 28"W x 28"D | HZC-SW

\$509



### Dining Horizon Swivel-Flex

S | 59 lbs | 39"H x 26"W x 28"D | HZC-20-SWRK  
W | 61 lbs | 39"H x 28"W x 28"D | HZC-SWRK

\$569



### Counter Horizon Stationary

43 lbs | 47"H x 26"W x 30"D | CNHZC

\$429



### Counter Horizon Swivel

58 lbs | 47"H x 26"W x 30"D | CNHZC-SW

\$529



### Counter Horizon Swivel-Flex

63 lbs | 47"H x 26"W x 30"D | CNHZC-SWRK

\$579



### Bar Horizon Stationary

45 lbs | 52"H x 26"W x 30"D | BHZC

\$439



### Bar Horizon Swivel

62 lbs | 52"H x 26"W x 30"D | BHZC-SW

\$539



### Bar Horizon Swivel-Flex

68 lbs | 52"H x 26"W x 30"D | BHZC-SWRK

\$589

## WINSTEAD CHAIRS



### Dining Winstead Stationary

S | 36 lbs | 38"H x 26"W x 25"D | WNC-20  
W | 38 lbs | 38"H x 28"W x 25"D | WNC

\$399



### Dining Winstead Swivel

S | 49 lbs | 38"H x 26"W x 25"D | WNC-20-SW  
W | 51 lbs | 38"H x 28"W x 25"D | WNC-SW

\$509



### Dining Winstead Swivel-Flex

S | 55 lbs | 38"H x 26"W x 25"D | WNC-20-SWRK  
W | 57 lbs | 38"H x 28"W x 25"D | WNC-SWRK

\$569



### Counter Winstead Stationary

41 lbs | 46"H x 26"W x 25"D | CNWNC

\$429



### Counter Winstead Swivel

56 lbs | 46"H x 26"W x 25"D | CNWNC-SW

\$529



### Counter Winstead Swivel-Flex

61 lbs | 46"H x 26"W x 25"D | CNWNC-SWRK

\$579



### Bar Winstead Stationary

43 lbs | 51"H x 26"W x 25"D | BWNC

\$439



### Bar Winstead Swivel

60 lbs | 51"H x 26"W x 25"D | BWNC-SW

\$539



### Bar Winstead Swivel-Flex

66 lbs | 51"H x 26"W x 25"D | BWNC-SWRK

\$589

## AD-BACK CHAIRS



### Dining Ad-Back Stationary

S | 37 lbs | 38"H x 26"W x 26"D | AXC-20  
W | 39 lbs | 38"H x 28"W x 26"D | AXC

\$399



### Dining Ad-Back Swivel

S | 55 lbs | 38"H x 26"W x 26"D | AXC-20-SW  
W | 57 lbs | 38"H x 28"W x 26"D | AXC-SW

\$509



### Dining Ad-Back Swivel-Flex

S | 57 lbs | 38"H x 26"W x 26"D | AXC-20-SWRK  
W | 59 lbs | 38"H x 28"W x 26"D | AXC-SWRK

\$569



### Counter Ad-Back Stationary

42 lbs | 47"H x 26"W x 29"D | CNAXC

\$429



### Counter Ad-Back Swivel

57 lbs | 47"H x 26"W x 29"D | CNAXC-SW

\$529



### Counter Ad-Back Swivel-Flex

62 lbs | 47"H x 26"W x 29"D | CNAXC-SWRK

\$579



### Bar Ad-Back Stationary

44 lbs | 51"H x 26"W x 29"D | BAXC

\$439



### Bar Ad-Back Swivel

61 lbs | 51"H x 26"W x 29"D | BAXC-SW

\$539



### Bar Ad-Back Swivel-Flex

S | 67 lbs | 51"H x 26"W x 29"D | BAXC-SWRK

\$589

Swivel chairs make maneuvering around a table effortless. Instead of moving the chair, simply rotate to get in and out with ease, perfect for tight spaces and a seamless dining experience.

## STUDIO CHAIRS



### Dining Studio Stationary

S | 36 lbs | 37"H x 26"W x 28"D | STC-20  
W | 38 lbs | 37"H x 28"W x 28"D | STC

\$399



### Dining Studio Swivel

S | 49 lbs | 37"H x 26"W x 28"D | STC-20-SW  
W | 51 lbs | 37"H x 28"W x 28"D | STC-SW

\$509



### Dining Studio Swivel-Flex

S | 55 lbs | 37"H x 26"W x 28"D | STC-20-SWRK  
W | 57 lbs | 37"H x 28"W x 28"D | STC-SWRK

\$569



### Counter Studio Stationary

41 lbs | 45"H x 26"W x 30"D | CNSTC

\$429



### Counter Studio Swivel

56 lbs | 45"H x 26"W x 30"D | CNSTC-SW

\$529



### Counter Studio Swivel-Flex

61 lbs | 45"H x 26"W x 30"D | CNSTC-SWRK

\$579



### Bar Studio Stationary

43 lbs | 50"H x 26"W x 30"D | BSTC

\$439



### Bar Studio Swivel

60 lbs | 50"H x 26"W x 30"D | BSTC-SW

\$539



### Bar Studio Swivel-Flex

66 lbs | 50"H x 26"W x 30"D | BSTC-SWRK

\$589

## CAPRI CHAIRS



### Dining Capri Stationary

S | 36 lbs | 37"H x 26"W x 28"D | CRC-20  
W | 38 lbs | 37"H x 28"W x 28"D | CRC

\$399



### Dining Capri Swivel

S | 49 lbs | 37"H x 26"W x 28"D | CRC-20-SW  
W | 51 lbs | 37"H x 28"W x 28"D | CRC-SW

\$509



### Dining Capri Swivel-Flex

S | 55 lbs | 37"H x 26"W x 28"D | CRC-20-SWRK  
W | 57 lbs | 37"H x 28"W x 28"D | CRC-SWRK

\$569



### Counter Capri Stationary

41 lbs | 45"H x 26"W x 30"D | CNCRC

\$429



### Counter Capri Swivel

56 lbs | 45"H x 26"W x 30"D | CNCRC-SW

\$529



### Counter Capri Swivel-Flex

61 lbs | 45"H x 26"W x 30"D | CNCRC-SWRK

\$579



### Bar Capri Stationary

43 lbs | 50"H x 26"W x 30"D | BCRC

\$439



### Bar Capri Swivel

60 lbs | 50"H x 26"W x 30"D | BCRC-SW

\$539



### Bar Capri Swivel-Flex

66 lbs | 50"H x 26"W x 30"D | BCRC-SWRK

\$589

S=Standard Seat | W=Wide Seat

\*Premium wood grain colors priced above base — contact us for details

## GARDEN CHAIRS



### Dining Garden Stationary

S | 33 lbs | 34"H x 26"W x 27"D | GRC-20  
W | 35 lbs | 34"H x 28"W x 27"D | GRC

\$399



### Dining Garden Swivel

S | 41 lbs | 34"H x 26"W x 27"D | GRC-20-SW  
W | 43 lbs | 34"H x 28"W x 27"D | GRC-SW

\$509



### Dining Garden Swivel-Flex

S | 53 lbs | 34"H x 26"W x 27"D | GRC-20-SWRK  
W | 55 lbs | 34"H x 28"W x 27"D | GRC-SWRK

\$569



### Counter Garden Stationary

39 lbs | 43"H x 26"W x 29"D | CNGRC

\$429



### Counter Garden Swivel

54 lbs | 43"H x 26"W x 29"D | CNGRC-SW

\$529



### Counter Garden Swivel-Flex

59 lbs | 43"H x 26"W x 29"D | CNGRC-SWRK

\$579



### Bar Garden Stationary

41 lbs | 47"H x 26"W x 29"D | BGRC

\$439



### Bar Garden Swivel

58 lbs | 47"H x 26"W x 29"D | BGRC-SW

\$539



### Bar Garden Swivel-Flex

64 lbs | 47"H x 26"W x 29"D | BGRC-SWRK

\$589

## CHIPPENDALE CHAIRS



### Dining Chippendale Stationary

S | 35 lbs | 37"H x 26"W x 28"D | CHC-20  
W | 37 lbs | 37"H x 28"W x 28"D | CHC

\$399



### Dining Chippendale Swivel

S | 46 lbs | 37"H x 26"W x 28"D | CHC-20-SW  
W | 48 lbs | 37"H x 28"W x 28"D | CHC-SW

\$509



### Dining Chippendale Swivel-Flex

S | 52 lbs | 37"H x 26"W x 28"D | CHC-20-SWRK  
W | 54 lbs | 37"H x 28"W x 28"D | CHC-SWRK

\$569



### Counter Chippendale Stationary

41 lbs | 45"H x 26"W x 30"D | CNCHC

\$429



### Counter Chippendale Swivel

56 lbs | 45"H x 26"W x 30"D | CNCHC-SW

\$529



### Counter Chippendale Swivel-Flex

61 lbs | 45"H x 26"W x 30"D | CNCHC-SWRK

\$579



### Bar Chippendale Stationary

43 lbs | 50"H x 26"W x 30"D | BCHC

\$439



### Bar Chippendale Swivel

60 lbs | 50"H x 26"W x 30"D | BCHC-SW

\$539



### Bar Chippendale Swivel-Flex

66 lbs | 50"H x 26"W x 30"D | BCHC-SWRK

\$589

## EMERSON CHAIRS



### Dining Emerson Stationary

S | 32 lbs | 37"H x 26"W x 28"D | EMC-20  
W | 34 lbs | 37"H x 28"W x 28"D | EMC

\$399



### Dining Emerson Swivel

S | 50 lbs | 37"H x 26"W x 28"D | EMC-20-SW  
W | 52 lbs | 37"H x 28"W x 28"D | EMC-SW

\$509



### Dining Emerson Swivel-Flex

S | 54 lbs | 37"H x 26"W x 28"D | EMC-20-SWRK  
W | 56 lbs | 37"H x 28"W x 28"D | EMC-SWRK

\$569



### Counter Emerson Stationary

40 lbs | 45"H x 26"W x 30"D | CNEMC

\$429



### Counter Emerson Swivel

55 lbs | 45"H x 26"W x 30"D | CNEMC-SW

\$529



### Counter Emerson Swivel-Flex

60 lbs | 45"H x 26"W x 30"D | CNEMC-SWRK

\$579



### Bar Emerson Stationary

42 lbs | 50"H x 26"W x 30"D | BEMC

\$439



### Bar Emerson Swivel

59 lbs | 50"H x 26"W x 30"D | BEMC-SW

\$539



### Bar Emerson Swivel-Flex

65 lbs | 50"H x 26"W x 30"D | BEMC-SWRK

\$589

### Comfort That Moves With You

Swivel-flex chairs offer smooth rotation and a flexible design, combining effortless movement with enhanced comfort. Perfect for extended seating and enjoying outdoor moments to the fullest.

## ARMLESS VILLA CHAIRS



### Dining Armless Villa Stationary

25 lbs | 36"H x 18"W x 22"D | AVC

\$299



### Counter Armless Villa Stationary

31lbs | 42"H x 18"W x 22"D | CNAVC

\$329



### Bar Armless Villa Stationary

33 lbs | 48"H x 18"W x 22"D | BAVC

\$339

## STUDIO BALCONY CHAIRS



NEW!

### Dining Studio Balcony Stationary

30 lbs | 35"H x 23"W x 23"D | STC-18

\$299



NEW!

### Counter Studio Balcony Stationary

36 lbs | 43"H x 23"W x 23"D | CNSTC-18

\$339



NEW!

### Bar Studio Balcony Stationary

39 lbs | 48"H x 23"W x 23"D | BSTC-18

\$349

## STUDIO ARMLESS CHAIRS



NEW!

### Dining Studio Armless Chair

25 lbs | 35"H x 18"W x 23"D | ASTC-18

\$299



NEW!

### Counter Studio Armless Chair

32 lbs | 43"H x 18"W x 23"D | CNASTC-18

\$339



NEW!

### Bar Studio Armless Chair

34 lbs | 48"H x 18"W x 23"D | BASTC-18

\$349

### Big Comfort, Small Footprint

Even small spaces deserve a great seat. Our Studio Collection brings the same comfort and craftsmanship to make every square foot count. Available in standard armed or armless styles, ideal for hotel balconies and restaurant patios.

# STOOLS



**Dining Parlor Stool**

19 lbs | 26"H x 15"W x 17"D | PDHS

\$259



**Counter Parlor Stool**

29 lbs | 34"H x 15"W x 17"D | CNPHS

\$269



**Bar Parlor Stool**

31 lbs | 40"H x 15"W x 17"D | BPHS

\$269



**Dining Stool**

12 lbs | 17"H x 15"W x 14"D | DHS

\$209



**Counter Stool**

13 lbs | 24"H x 15"W x 14"D | CNHS

\$219



**Bar Stool**

15 lbs | 30"H x 15"W x 14"D | BHS

\$229



**Dining Swivel Stool**

16 lbs | 17"H x 15"W x 14"D | DHS-SW

\$249



**Counter Swivel Stool**

21 lbs | 24"H x 15"W x 14"D | CNHS-SW

\$259



**Bar Swivel Stool**

23lbs | 30"H x 15"W x 14"D | BHS-SW

\$269



### Dining Saddle Stool

10 lbs | 17"H x 17"W x 12"D | DSD

\$209



### Counter Saddle Stool

15 lbs | 24"H x 17"W x 12"D | CNSD

\$219



### Bar Saddle Stool

16 lbs | 30"H x 17"W x 12"D | BSD

\$229

## MISSION ARMCHAIRS

\*Mission armchairs will not tuck under dining tables.



### Mission Arm Chair

39 lbs | 45"H x 26"W x 30"D | MSC-20

\$499



### Mission Wide Arm Chair

52 lbs | 45"H x 33"W x 28"D | MSC

\$509



### Mission King Arm Chair

59 lbs | 45"H x 33"W x 31"D | MSCK

\$549

Our Mission Arm Chairs are the perfect complement to our coffee and side tables, creating a cohesive and stylish setting for any outdoor space – See P. 88.



51" Dining Height Fire Table | Black | FT51 | P. 62  
Mission Dining Swivel-Flex Chairs  
Black | MSDC-20-SWRK | P. 8



Bar Cambridge Table | White | BCLT28 | P. 29  
Bar Parlor Stool | White | BPHS | P. 19



17x57 Counter Height Balcony Table | Grayed Ash | CNBT1757 | P. 32  
Counter Studio Balcony Chair | Grayed Ash | CNSTC-18 | P. 18

# GATHER 'ROUND



Dining Studio Armless Chair | Brown | ASTC-18 | P. 18

### STEP 1

## CHOOSE A TABLE SHAPE

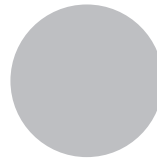
Look beyond the table and consider the area and uses. Round tables are nice for tight spaces with less room to move about. However, squared corners create more usable space at the table.



Square



Rectangle



Circle



Oval

### STEP 2

## CHOOSE A SEATING CAPACITY

People usually think big, but a small table can create an inviting setting for two to four people. Of course, big tables are a must for large families and gatherings with lots of guests to accommodate.



Seat 2



Seat 4



Seat 6



Seat 8

### STEP 3

## CHOOSE A HEIGHT

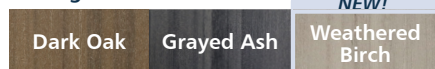
Do you want to stand or sit and relax? Can everyone use a high seat, or should you accommodate kids, seniors, or people with disabilities? A table's height plays a big role in who can use a table and how.



### STEP 4

## CHOOSE A COLOR

#### Woodgrain Colors



\*Premium wood grain colors priced above base — contact us for details.

#### Solid Colors



## TABLES



**Dining 44" x 122" Oval Framed Table**

Seats 8-10

247 lbs | 30"H x 44"W x 122"D | OPFT44122

\$3,399



**Counter 44" x 122" Oval Framed Table**

Seats 8-10

262 lbs | 37"H x 44"W x 122"D | CNOPT44122

\$3,599



**Bar 44" x 122" Oval Framed Table**

Seats 8-10

268 lbs | 42"H x 44"W x 122"D | BOPFT44122

\$3,699



**Dining 46" x 88" Oval Table**

Seats 6

180 lbs | 30"H x 46"W x 88"D | OPT4688

\$1,999



**Counter 46" x 88" Oval Table**

Seats 6

188 lbs | 37"H x 46"W x 88"D | CNOPT4688

\$2,079



**Bar 46" x 88" Oval Table**

Seats 6

192 lbs | 42"H x 46"W x 88"D | BOPT4688

\$2,099



**Dining 44" x 88" Oval Framed Table**

Seats 6

175 lbs | 30"H x 44"W x 88"D | OPFT4488

\$2,449



**Counter 44" x 88" Oval Framed Table**

Seats 6

183 lbs | 37"H x 44"W x 88"D | CNOPT4488

\$2,539



**Bar 44" x 88" Oval Framed Table**

Seats 6

187 lbs | 42"H x 44"W x 88"D | BOPFT4488

\$2,599

\*Premium wood grain colors priced above base — contact us for details



**Dining 38" x 88" Oval Framed Table**

Seats 6

156 lbs | 30"H x 38"W x 88"D | OPFT3888

\$2,229



**Counter 38" x 88" Oval Framed Table**

Seats 6

164 lbs | 37"H x 38"W x 88"D | CNOPFT3888

\$2,279



**Bar 38" x 88" Oval Framed Table**

Seats 6

168 lbs | 42"H x 38"W x 88"D | BOPFT3888

\$2,299

TABLES



**Dining 44" x 66" Oval Framed Table**

Seats 4-6

138 lbs | 30"H x 44"W x 66"D | OPFT4466

\$1,949



**Counter 44" x 66" Oval Framed Table**

Seats 4-6

152 lbs | 37"H x 44"W x 66"D | CNOPFT4466

\$2,069



**Bar 44" x 66" Oval Framed Table**

Seats 4-6

156 lbs | 42"H x 44"W x 66"D | BOPFT4466

\$2,099



**Dining 46" x 65" Oval Table**

Seats 4-6

138 lbs | 30"H x 46"W x 65"D | OPT4665

\$1,599



**Counter 46" x 65" Oval Table**

Seats 4-6

143 lbs | 37"H x 46"W x 65"D | CNOPT4665

\$1,679



**Bar 46" x 65" Oval Table**

Seats 4-6

147 lbs | 42"H x 46"W x 65"D | BOPT4665

\$1,699



**Dining 38" x 66" Oval Framed Table**

Seats 4-6

121 lbs | 30"H x 38"W x 66"D | OPFT3866

\$1,879



**Counter 38" x 66" Oval Framed Table**

Seats 4-6

131 lbs | 37"H x 38"W x 66"D | CNOPFT3866

\$1,919



**Bar 38" x 66" Oval Framed Table**

Seats 4-6

135 lbs | 42"H x 38"W x 66"D | BOPFT3866

\$1,939



**Dining 36" x 58" Rectangular Framed Table**

Seats 4

113 lbs | 30"H x 36"W x 58"D | DT3658

\$1,699



**Counter 36" x 58" Rectangular Framed Table**

Seats 6

115 lbs | 37"H x 36"W x 58"D | CNT3658

\$1,459



**Bar 36" x 58" Rectangular Framed Table**

Seats 6

123 lbs | 42"H x 36"W x 58"D | BT3658

\$1,479



**Dining 94" Farmhouse Table**

Seats 6-8

229 lbs | 30"H x 40"W x 94"D | FHT4094

\$2,499



**Counter 94" Farmhouse Table**

Seats 6-8

247 lbs | 37"H x 40"W x 94"D | CNFHT4094

\$2,699



**Bar 94" Farmhouse Table**

Seats 6-8

257 lbs | 42"H x 40"W x 94"D | BFHT4094

\$2,799

\*Premium wood grain colors priced above base — contact us for details



**Dining 78" Farmhouse Table**

Seats 6

170 lbs | 30"H x 40"W x 78"D | FHT4078

\$2,299



**Counter 78" Farmhouse Table**

Seats 6

179 lbs | 37"H x 40"W x 78"D | CNFHT4078

\$2,499



**Bar 78" Farmhouse Table**

Seats 6

184 lbs | 42"H x 40"W x 78"D | BFHT4078

\$2,599

TABLES



**Dining 44" Square Table**

Seats 4

87 lbs | 30"H x 44"W x 44"D | SPT44

\$1,099



**Counter 44" Square Table**

Seats 4

103 lbs | 37"H x 44"W x 44"D | CNSPT44

\$1,179



**Bar 44" Square Table**

Seats 4

119 lbs | 42"H x 44"W x 44"D | BSPT44

\$1,199



**Dining 40" Square Unframed Table**

Seats 4

76 lbs | 30"H x 40"W x 40"D | SPT40

\$799



**Counter 40" Square Unframed Table**

Seats 4

85 lbs | 37"H x 40"W x 40"D | CNSPT40

\$879



**Bar 40" Square Unframed Table**

Seats 4

88 lbs | 42"H x 40"W x 40"D | BSPT40

\$899



**Dining 38" Square Table**

Seats 4

75 lbs | 30"H x 38"W x 38"D | SPT38

\$989



**Counter 38" Square Table**

Seats 4

84 lbs | 37"H x 38"W x 38"D | CNSPT38

\$1,039



**Bar 38" Square Table**

Seats 4

98 lbs | 42"H x 38"W x 38"D | BSPT38

\$1,059



**Dining 36" Heritage Square Table**

Seats 4

63 lbs | 30 "H x 36"W x 36"D | HFT36

\$769



**Counter 36" Heritage Square Table With Shelf**

Seats 4

71 lbs | 37"H x 36"W x 36"D | CNST36

\$879



**Bar 36" Square Heritage Table With Shelf**

Seats 6

77 lbs | 42"H x 36"W x 36"D | BST36

\$899



**Dining 28" Heritage Square Table**

Seats 2

46 lbs | 30"H x 28"W x 28"D | HFT28

\$649



**Counter 28" Heritage Square Table**

Seats 2

55 lbs | 37"H x 28"W x 28"D | CNHLT28

\$669



**Bar 28" Heritage Square Table**

Seats 2

62 lbs | 42"H x 28"W x 28"D | BHLT28

\$689

\*Premium wood grain colors priced above base — contact us for details



**Dining 28" Cambridge Square Table**

Seats 2  
57 lbs | 30"H x 28"W x 28"D | CFT28  
\$649



**Counter 28" Cambridge Square Table**

Seats 2  
56 lbs | 37"H x 28"W x 28"D | CNCLT28  
\$649



**Bar 28" Cambridge Square Table**

Seats 2  
63 lbs | 42"H x 28"W x 28"D | BCLT28  
\$669

TABLES



**Dining Game Table**

Seats 2  
52 lbs | 30"H x 28"W x 28"D | GFT-CB  
\$749



**Counter Game Table**

Seats 2  
58 lbs | 37"H x 28"W x 28"D | CNGLT-CB  
\$759



**Bar Game Table**

Seats 2  
62 lbs | 42"H x 28"W x 28"D | BGLT-CB  
\$779



**Dining 58" Round Framed Cabinet Base Table**

Seats 6  
178 lbs | 30"H x 58"Dia | RFBT58  
\$1,979



**Counter 58" Round Framed Cabinet Base Table**

Seats 6  
194 lbs | 37"H x 58"Dia | CNRFBT58  
\$2,139



**Bar 58" Round Framed Cabinet Base Table**

Seats 6  
200 lbs | 42"H x 58"Dia | BRFBT58  
\$2,199



**Dining 51" Round Framed Table**

Seats 4

93 lbs | 30"H x 51"Dia | RPFT51

\$1,229



**Counter 51" Round Framed Table**

Seats 4

96 lbs | 37"H x 51"Dia | CNRPFT51

\$1,279



**Bar 51" Round Framed Table**

Seats 4

99 lbs | 42"H x 51"Dia | BRPFT51

\$1,299



**Dining 48" Round Table**

Seats 4

80 lbs | 30"H x 48"Dia | RPT48

\$959



**Counter 48" Round Table**

Seats 4

83 lbs | 37"H x 48"Dia | CNRPPT48

\$979



**Bar 48" Round Table**

Seats 4

87 lbs | 42"H x 48"Dia | BRPT48

\$1,019



**Dining 44" Round Framed Table**

Seats 4

74 lbs | 30"H x 44"Dia | RPFT44

\$1,129



**Counter 44" Round Framed Table**

Seats 4

77 lbs | 37"H x 44"Dia | CNRPFT44

\$1,179



**Bar 44" Round Framed Table**

Seats 4

80 lbs | 42"H x 44"Dia | BRPFT44

\$1,199

\*Premium wood grain colors priced above base — contact us for details



**Dining 42" Round Table**

Seats 4  
73 lbs | 30 "H x 42"Dia | RPT42  
\$859



**Counter 42" Round Table**

Seats 4  
77 lbs | 37"H x 42"Dia | CNRPT42  
\$879



**Bar 42" Round Table**

Seats 4  
80 lbs | 42"H x 42"Dia | BRPT42  
\$899



**Dining 36" Round Cafe Table**

Seats 4  
63 lbs | 30"H x 36"Dia | RPT36  
\$659



**Counter 36" Round Leg Table**

Seats 4  
58 lbs | 37"H x 36"Dia | CNRLT36  
\$679



**Bar 36" Round Leg Table**

Seats 4  
59 lbs | 42"H x 36"Dia | BRLT36  
\$699



**Dining 31" Round Framed Cafe Table**

Seats 2-4  
41 lbs | 30"H x 31"Dia | RPFT31  
\$619



**Counter 31" Round Framed Leg Table**

Seats 2-4  
53 lbs | 37"H x 31"Dia | CNRLFT31  
\$599



**Bar 31" Round Framed Leg Table**

Seats 2-4  
55 lbs | 42"H x 31"Dia | BRLFT31  
\$619



**Counter 42" Round Legged Table**

Seats 4

67 lbs | 37"H x 42"Dia | CNRLT42

\$759



**Bar 42" Round Legged Table**

Seats 4

69 lbs | 42"H x 42"Dia | BRLT42

\$799



**Counter 28" x 58" Rectangular Framed Table**

Seats 4-6

92 lbs | 37"H x 28"W x 58"D | CNT2858

\$1,239



**Hexagon Picnic Table**

Seats 6

252 lbs | 29"H x 75"W x 87"D | HXPT

\$2,299



**Mini Picnic Table**

77lbs | 25"H x 42"W x 42"D | MPT

\$699



**Bar 28" x 58" Rectangular Framed Table**

Seats 4-6

100 lbs | 42"H x 28"W x 58"D | BT2858

\$1,259



**Counter 17" x 48" Balcony Table**

Seats 2

50 lbs | 37"H x 48"W x 17"D | CNBT1748

\$629



**Dining 17" x 57" Balcony Table**

Seats 2

52 lbs | 30"H x 57"W x 17"D | DBT1757

\$679



**Counter 17" x 57" Balcony Table**

Seats 2

66 lbs | 37"H x 57"W x 17"D | CNBT1757

\$699

\*Premium wood grain colors priced above base — contact us for details

## Hospitality Spaces

In hospitality settings, outdoor furniture must withstand constant use and reinforce the property's brand. By the Yard furniture is engineered for commercial environments where durability, comfort, and visual consistency matter. Clean lines, weather resistant construction, and easy maintenance support long service life and elevate the guest experience.



## Senior Living Communities

Outdoor spaces in senior living should feel welcoming, secure, and easy to use. By the Yard furniture offers stable construction, supportive ergonomics, and durable, low-maintenance materials that promote comfort and confidence. The result is outdoor settings that encourage daily use and connection while maintaining a polished, residential feel.



## Multi Family Communities

Shared outdoor spaces shape how residents experience a community. By the Yard furniture is built for high-use environments, offering commercial-grade durability, cohesive styles, and low-maintenance materials. The result is outdoor furniture that strengthens shared spaces and enhances everyday living.



# OUTDOOR ESCAPES



**STEP 1**

# CHOOSE AN ADIRONDACK STYLE

Back style influences comfort and usability, upright profiles ease entry and exit for shared spaces, while relaxed angles create a more laid-back experience with stable support.



Traditional



Windsor



Sand Creek



Alpine



Backyard

**STEP 2**

# CHOOSE YOUR FIT

Chair size shapes comfort and spacing, standard Adirondacks suit most shared environments, while King sizes add extra room where greater comfort is needed.



**Traditional Settee**  
87 lbs | 41"H x 50"W x 32"D | ADST



**Windsor King Adirondack**  
50 lbs | 41"H x 33"W x 39"D | WACK

**Traditional King Ottoman**  
14 lbs | 15"H x 20"W x 19"D | OTK

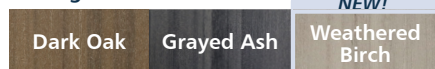


**Sand Creek Raised & Upright Adirondack**  
43 lbs | 45"H x 31"W x 32"D | SBC-RS

**STEP 3**

# CHOOSE A COLOR

**Woodgrain Colors**



\*Premium wood grain colors priced above base — contact us for details.

**Solid Colors**



## ADIRONDACKS



### Traditional Adirondack

42 lbs | 41"H x 30"W x 33"D | ADLX

\$399



### Traditional Raised & Upright Adirondack

38 lbs | 45"H x 31"W x 33"D | ADLX-RS

\$399



### Traditional King Adirondack

50 lbs | 41"H x 32"W x 38"D | ADLXK

\$449



### Traditional King Raised & Upright Adirondack

50 lbs | 45"H x 33"W x 34"D | ADLXK-RS

\$449

### Options for Different Needs

Raised & Upright Adirondacks provide a higher seat for smooth transitions from sitting to standing, while Traditional Adirondacks offer a more relaxed seating experience. Using both styles helps accommodate different users without sacrificing a cohesive look.

See which one is the perfect fit for you at [bytheyard.net](http://bytheyard.net) or call **952-219-7070!**



### Windsor Adirondack

43 lbs | 38"H x 30"W x 34"D | WAC

\$399



### Windsor Raised & Upright Adirondack

39 lbs | 46"H x 31"W x 32"D | WCC-RS

\$399



### Windsor King Adirondack

50 lbs | 39"H x 32"W x 39"D | WACK

\$449



### Windsor King Raised & Upright Adirondack

50 lbs | 46"H x 33"W x 33"D | WCCCK-RS

\$449

\*Premium wood grain colors priced above base — contact us for details



**Sand Creek Adirondack**

43 lbs | 38"H x 30"W x 34"D | SCC

\$399



**Sand Creek Raised & Upright Adirondack**

43 lbs | 45"H x 31"W x 32"D | SBC-RS

\$399



**Sand Creek King Adirondack**

50 lbs | 38"H x 32"W x 38"D | SCCK

\$449



**Sand Creek King Raised & Upright Adirondack**

54 lbs | 45"H x 33"W x 33"D | SBCK-RS

\$449



Traditional Adirondack | Weathered Wood  
ADLX | P. 36

Prairie End Table | Weathered Wood | PET  
P. 91



**Backyard Adirondack**

53 lbs | 43"H x 33"W x 38"D | BYC

\$439



**Alpine Adirondack**

41 lbs | 40"H x 31"W x 32"D | APC

\$349



**Alpine Raised & Upright Adirondack**

46 lbs | 45"H x 31"W x 32"D | APC-RS

\$349

*Interested in adding a headrest to your new chair? See styles online at [bytheyard.net](http://bytheyard.net) or call us at 952-219-7070.*

ADIRONDACKS

## SETTEE'S



**Traditional Settee**

87 lbs | 41"H x 50"W x 32"D | ADST

\$859



**Backyard Settee**

82 lbs | 44"H x 57"W x 39"D | BYST

\$899



We have purchased products from a well-known competitor, and they are nowhere near the standard of By the Yard.

## MINI ADIRONDACKS



**Mini Adirondack**

20 lbs | 29"H x 21"W x 24"D | MADLX

\$199



**Mini Windsor Adirondack**

20 lbs | 29"H x 21"W x 24"D | MWAC

\$199



**Mini Sand Creek Adirondack**

20 lbs | 29"H x 21"W x 24"D | MSCC

\$199



**Mini Accent Table**

7 lbs | 12"H x 12"W x 12"D | MACT

\$99

*Sand Creek Mini Adirondack 21"*



### Mini Collection

Scaled for children, our Mini Collection offers durable seating for family-friendly commercial spaces, helping create inclusive outdoor areas without compromising design or performance.

*Check out our Mini Picnic Table on page 32!*

**ADIRONDACK ACCESSORIES**



**Traditional Ottoman**

14 lbs | 15"H x 20"W x 19"D | OT

\$129



**Backyard Ottoman**

17 lbs | 15"H x 23"W x 17"D | OTBY

\$139



**Raised & Upright Ottoman**

14 lbs | 16"H x 20"W x 14"D | OTRS

\$129



**Traditional King Ottoman**

15 lbs | 15"H x 23"W x 21"D | OTK

\$139



**King Raised & Upright Ottoman**

14 lbs | 16"H x 23"W x 15"D | OTRSK

\$139



**Cup Holder**

1 lbs | 4"H x 4"W x 4"D | CUP

*\*Fits most beverage containers including your stemmed glasses!*

\$49

ADIRONDACKS



# MOMENTS MADE FOR TWO





### Horizon Tete-a-Tete

---

- \$1,049 Dining | 104 lbs | 39"H x 78"W x 35"D | HZC-20-TT
- \$1,049 Dining, Wide | 109 lbs | 39"H x 82"W x 35"D | HZC-TT
- \$1,079 Counter | 111 lbs | 47"H x 76"W x 36"D | CNHZC-TT
- \$1,099 Bar | 114 lbs | 52"H x 76"W x 36"D | BHZC-TT



### Capri Tete-a-Tete

---

- \$1,049 Dining | 101 lbs | 37"H x 78"W x 35"D | CRC-20-TT
- \$1,049 Dining, Wide | 105 lbs | 37"H x 82"W x 35"D | CRC-TT
- \$1,079 Counter | 107 lbs | 45"H x 76"W x 36"D | CNCRC-TT
- \$1,099 Bar | 110 lbs | 50"H x 76"W x 36"D | BCRC-TT



### Ad-Back Tete-a-Tete

---

- \$1,049 Dining | 101 lbs | 38"H x 78"W x 35"D | AXC-20-TT
- \$1,049 Dining, Wide | 105 lbs | 38"H x 82"W x 35"D | AXC-TT
- \$1,079 Counter | 107 lbs | 47"H x 76"W x 36"D | CNAXC-TT
- \$1,099 Bar | 111 lbs | 51"H x 76"W x 36"D | BAXC-TT



### Emerson Tete-a-Tete

---

- \$1,049 Dining | 102 lbs | 37"H x 78"W x 35"D | EMC-20-TT
- \$1,049 Dining, Wide | 105 lbs | 37"H x 82"W x 35"D | EMC-TT
- \$1,079 Counter | 108 lbs | 45"H x 76"W x 36"D | CNEMC-TT
- \$1,099 Bar | 110 lbs | 50"H x 76"W x 36"D | BEMC-TT



### Chippendale Tete-a-Tete

---

- \$1,049 Dining | 102 lbs | 37"H x 78"W x 35"D | CHC-20-TT
- \$1,049 Dining, Wide | 105 lbs | 37"H x 82"W x 35"D | CHC-TT
- \$1,079 Counter | 108 lbs | 45"H x 76"W x 36"D | CNCHC-TT
- \$1,099 Bar | 110 lbs | 50"H x 76"W x 36"D | BCHC-TT



### Days End Tete-a-Tete

---

- \$1,049 Dining | 110 lbs | 46"H x 78"W x 35"D | JFKC-20-TT
- \$1,049 Dining, Wide | 114 lbs | 46"H x 82"W x 35"D | JFKC-TT

## Garden Tete-a-Tete

---



\$1,049 Dining | 102 lbs | 34"H x 78"W x 35"D | GRC-20-TT

\$1,049 Dining, Wide | 106 lbs | 34"H x 82"W x 35"D | GRC-TT

\$1,079 Counter | 106 lbs | 43"H x 76"W x 36"D | CNGRC-TT

\$1,099 Bar | 111 lbs | 47"H x 76"W x 36"D | BGRC-TT



## Day Break Tete-a-Tete

---



\$1,049 Dining | 101 lbs | 37"H x 78"W x 35"D | DBC-20-TT

\$1,049 Dining, Wide | 102 lbs | 37"H x 82"W x 35"D | DBC-TT

\$1,079 Counter | 103 lbs | 46"H x 76"W x 36"D | CNDBC-TT

\$1,099 Bar | 108 lbs | 50"H x 76"W x 36"D | BDDBC-TT



## Studio Tete-a-Tete

---



\$1,049 Dining | 103 lbs | 37"H x 78"W x 35"D | STC-20-TT

\$1,049 Dining, Wide | 104 lbs | 37"H x 82"W x 35"D | STC-TT

\$1,079 Counter | 108 lbs | 45"H x 76"W x 36"D | CNSTC-TT

\$1,099 Bar | 110 lbs | 50"H x 76"W x 36"D | BSTC-TT



## Winstead Tete-a-Tete

---



\$1,049 Dining | 103 lbs | 38"H x 78"W x 35"D | WNC-20-TT

\$1,049 Dining, Wide | 104 lbs | 38"H x 82"W x 35"D | WNC-TT

\$1,079 Counter | 108 lbs | 46"H x 82"W x 35"D | CNWNC-TT

\$1,099 Bar | 110 lbs | 51"H x 82"W x 35"D | BWNC-TT



## Windsor Tete-a-Tete

---



\$1,049 Dining | 111 lbs | 46"H x 78"W x 35"D | WDC-20-TT

\$1,049 Dining, Wide | 115 lbs | 46"H x 82"W x 35"D | WDC-TT

### Mission Chair Tete-a-Tete



- \$1,049 Dining | 110 lbs | 45"H x 85"W x 35"D | MSDC-20-TT
- \$1,049 Dining, Wide | 114 lbs | 45"H x 87"W x 35"D | MSDC-TT
- \$1,169 Mission Arm Chair | 138 lbs | 45"H x 83"W x 36"D | MSC-20-TT
- \$1,179 Mission Arm Chair, Wide | 140 lbs | 45"H x 87"W x 36"D | MSC-TT
- \$1,199 Mission Arm Chair, King | 150 lbs | 45"H x 88"W x 37"D | MSCK-TT



### Alpine Adirondack Tete-a-Tete

- \$949 Traditional | 112 lbs | 38"H x 75"W x 38"D | APC-TT
- \$949 Raised & Upright | 122 lbs | 45"H x 75"W x 35"D | APC-RS-TT



### Traditional Adirondack Tete-a-Tete

- \$1,049 Traditional | 114 lbs | 41"H x 76"W x 33"D | ADLX-TT
- \$1,049 Raised & Upright | 106 lbs | 45"H x 77"W x 33"D | ADLX-RS-TT
- \$1,149 King | 130 lbs | 41"H x 78"W x 35"D | ADLXK-TT
- \$1,149 King, Raised & Upright | 130 lbs | 45"H x 79"W x 34"D | ADLXK-RS-TT



### Windsor Adirondack Tete-a-Tete

- \$1,049 Traditional | 116 lbs | 39"H x 76"W x 34"D | WAC-TT
- \$1,049 Raised & Upright | 124 lbs | 46"H x 77"W x 32"D | WCC-RS-TT
- \$1,149 King | 130 lbs | 39"H x 78"W x 36"D | WACK-TT
- \$1,149 King, Raised & Upright | 130 lbs | 46"H x 79"W x 33"D | WCCK-RS-TT



### Sand Creek Adirondack Tete-a-Tete

- \$1,049 Traditional | 116 lbs | 38"H x 76"W x 34"D | SCC-TT
- \$1,049 Raised & Upright | 116 lbs | 45"H x 77"W x 32"D | SBC-RS-TT
- \$1,149 King | 118 lbs | 38"H x 78"W x 35"D | SCCK-TT
- \$1,149 King, Raised & Upright | 138 lbs | 45"H x 79"W x 33"D | SBCK-RS-TT



### Backyard Adirondack Tete-a-Tete

- \$1,099 136 lbs | 44"H x 82"W x 46"D | BYC-TT

# SWITCH INTO GLIDE MODE



**STEP 1**

# CHOOSE A BACK STYLE

Back style shapes comfort and the sensory experience, supportive backs encourage longer stays, while open profiles keep sightlines clear and the space visually light.



Windsor



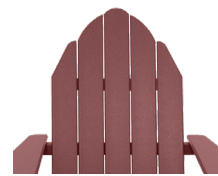
Mission



Days End



Sand Creek



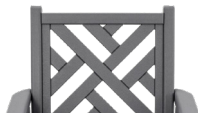
Ad-Back



Horizon



Winstead



Emerson



Chippendale



Day Break



Capri



Studio

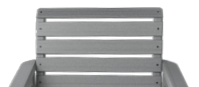
**STEP 2**

# CHOOSE YOUR VIBE

Glider configurations support different needs, individuals offer calm personal seating, while benches and tete-a-tetes foster shared moments and help balance movement and flow.



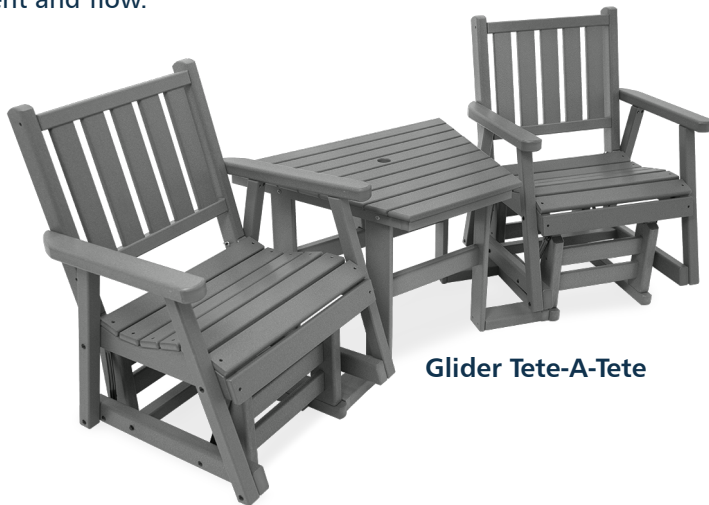
Glider



Garden



Swivel Glider



Glider Tete-A-Tete

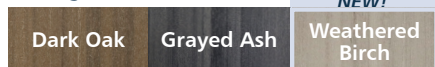


Glider Bench

**STEP 3**

# CHOOSE A COLOR

Woodgrain Colors



\*Premium wood grain colors priced above base — contact us for details.

Solid Colors



## MISSION GLIDERS



### Mission Swivel Glider

87 lbs | 45"H x 33"W x 29"D | MSGC-SW

\$809



### Mission Glider

66 lbs | 45"H x 33"W x 29"D | MSGC

\$689



### Mission King Glider

72 lbs | 45"H x 33"W x 32"D | MSGCK

\$709



### Mission 48" Glider Bench

95 lbs | 45"H x 54"W x 29"D | MSGL48

\$1,039



### Mission King 48" Glider Bench

102 lbs | 45"H x 54"W x 32"D | MSGLK48

\$1,079

*Did you know?*

All By the Yard furniture is made from recycled #2 plastics, such as milk and laundry detergent jugs.



### Mission Glider Tete-A-Tete

168 lbs | 45"H x 94"W x 37"D | MSGC-TT

\$1,729



### Mission King Glider Tete-A-Tete

170 lbs | 45"H x 94"W x 39"D | MSGCK-TT

\$1,759



**Days End Swivel Glider**

77 lbs | 47"H x 29"W x 30"D | JFKGC-SW

\$759



**Days End Glider**

56 lbs | 47"H x 29"W x 30"D | JFKGC

\$639



**Days End King Glider**

57 lbs | 47"H x 29"W x 33"D | JFKGCK

\$659



**Days End 48" Glider Bench**

87 lbs | 47"H x 50"W x 33"D | JFKGL48

\$999



**Days End Glider Tete-A-Tete**

144 lbs | 47"H x 89"W x 37"D | JFKGC-TT

\$1,619

*Did you know?*

Days End back style was inspired by the classic John F. Kennedy Rocker.



Days End Swivel Glider | Gray | JFKGC-SW



**Days End King Glider Tete-A-Tete**

150 lbs | 47"H x 89"W x 39"D | JFKGCK-TT

\$1,659

GLIDERS

## SAND CREEK GLIDERS



**Sand Creek Swivel Glider**

84 lbs | 49"H x 33"W x 33"D | SCGC-SW

\$789



**Sand Creek Glider**

59 lbs | 49"H x 33"W x 33"D | SCGC

\$659



**Sand Creek King Glider**

60 lbs | 49"H x 33"W x 35"D | SCGCK

\$679



**Sand Creek 48" Glider Bench**

99 lbs | 49"H x 53"W x 33"D | SCGL48

\$979



**Sand Creek Glider Tete-a-Tete**

149 lbs | 39"H x 87"W x 33"D | SCGC-TT

\$1,679



**Sand Creek King Glider Tete-a-Tete**

150 lbs | 39"H x 87"W x 35"D | SCGCK-TT

\$1,699

*Did you know?*

You can leave By the Yard furniture outside year-round. No need to cover or store it.

**ADIRONDACK GLIDERS**



**Adirondack Swivel Glider**

81 lbs | 48"H x 33"W x 32"D | AGCLX-SW

\$779



**Adirondack Glider**

60 lbs | 48"H x 33"W x 32"D | AGCLX

\$659



**Adirondack King Glider**

63 lbs | 48"H x 33"W x 35"D | AGCLXK

\$679



**Adirondack 48" Glider Bench**

100 lbs | 48"H x 54"W x 32"D | AGLX48

\$979



**Adirondack Glider Tete-a-Tete**

158 lbs | 48"H x 89"W x 33"D | AGCLX-TT

\$1,679

*Did you know?*

Our furniture uses color matched stainless steel hardware for superior durability and longevity in all climates.



**Adirondack King Glider Tete-a-Tete**

162 lbs | 48"H x 89"W x 36"D | AGCLXK-TT

\$1,699

GLIDERS

## WINDSOR GLIDERS



### Windsor Swivel Glider

83 lbs | 49"H x 33"W x 31"D | WAGC-SW

\$789



### Windsor Glider

59 lbs | 49"H x 33"W x 31"D | WAGC

\$659



### Windsor King Glider

61 lbs | 49"H x 33"W x 34"D | WAGCK

\$679



### Windsor 48" Glider Bench

101 lbs | 50"H x 54"W x 32"D | WAGL48

\$979



### Windsor Glider Tete-A-Tete

152 lbs | 49"H x 89"W x 35"D | WAGC-TT

\$1,679

*Did you know?*

By the Yard furniture is backed by a 15-year warranty. Durability that stands apart.



### Windsor King Glider Tete-A-Tete

160 lbs | 49"H x 89"W x 38"D | WAGCK-TT

\$1,699



Windsor Glider | Brown & Coffee | WAGC

\*Premium wood grain colors priced above base — contact us for details



**Winstead Swivel Glider**

70 lbs | 38"H x 28"W x 30"D | WNGC-SW

\$719



**Winstead Glider**

50 lbs | 38"H x 28"W x 30"D | WNGC

\$599



**Winstead King Glider**

53 lbs | 38"H x 28"W x 33"D | WNGCK

\$619



**Winstead Glider Tete-a-Tete**

138 lbs | 38"H x 86"W x 36"D | WNGC-TT

\$1539



**Winstead King Glider Tete-a-Tete**

144 lbs | 38"H x 86"W x 39"D | WNGCK-TT

\$1,559

*Did you know?*

All furniture is designed and crafted in Jordan, MN, using high-quality, recycled materials, and our own time tested recipe.



The furniture is solid, I never have to worry about it blowing into our pool.



**Horizon Swivel Glider**

73 lbs | 40"H x 28"W x 30"D | HZGC-SW

\$719



**Horizon Glider**

52 lbs | 40"H x 28"W x 30"D | HZGC

\$599



**Horizon King Glider**

54 lbs | 40"H x 28"W x 33"D | HZGCK

\$619



**Horizon 48" Glider Bench**

87 lbs | 40"H x 48"W x 30"D | HZGL48

\$989



**Horizon 60" Glider Bench**

127 lbs | 40"H x 60"W x 30"D | HZGL60

\$1,199

*Did you know?*

All products are designed to withstand all weather conditions — heat, snow, rain, salty air, and humidity.



**Horizon Glider Tete-a-Tete**

142 lbs | 39"H x 87"W x 37"D | HZGC-TT

\$1,539



**Horizon King Glider Tete-A-Tete**

145 lbs | 39"H x 87"W x 37"D | HZGCK-TT

\$1,539

\*Premium wood grain colors priced above base — contact us for details



**Capri Swivel Glider**

71 lbs | 37"H x 28"W x 30"D | CRGC-SW

\$719



**Capri Glider**

50 lbs | 37"H x 28"W x 30"D | CRGC

\$599



**Capri King Glider**

52 lbs | 37"H x 28"W x 33"D | CRGCK

\$619



**Capri 48" Glider Bench**

82 lbs | 37"H x 48"W x 30"D | CRGL48

\$829



**Capri 60" Glider Bench**

112 lbs | 37"H x 60"W x 30"D | CRGL60

\$1,079

GLIDERS

*Did you know?*

By the Yard furniture is UV-stabilized to minimize fading, keeping colors vibrant for decades.

See P. 98 for information.



**Capri Glider Tete-a-Tete**

138 lbs | 37"H x 87"W x 36"D | CRGC-TT

\$1,539



**Capri King Glider Tete-a-Tete**

141 lbs | 37"H x 87"W x 38"D | CRGCK-TT

\$1,559



**Studio Swivel Glider**

71 lbs | 37"H x 28"W x 30"D | STGC-SW

\$719



**Studio Glider**

50 lbs | 37"H x 28"W x 30"D | STGC

\$599



**Studio King Glider**

53 lbs | 37"H x 28"W x 33"D | STGCK

\$619



**48" Studio Glider Bench**

74 lbs | 37"H x 48"W x 28"D | STGL48

\$829



**60" Studio Glider Bench**

97 lbs | 37"H x 60"W x 28"D | STGL60

\$1,079

*Did you know?*

You can select from our full color palette to customize the look of your furniture — right down to each board.



**Studio Glider Tete-a-Tete**

138 lbs | 37"H x 86"W x 35"D | STGC-TT

\$1,539



**Studio King Glider Tete-a-Tete**

144 lbs | 37"H x 86"W x 38"D | STGCK-TT

\$1,559

\*Premium wood grain colors priced above base — contact us for details

**DAY BREAK GLIDERS**



**Day Break Swivel Glider**

70 lbs | 38”H x 28”W x 30”D | DBGCSW  
\$719



**Day Break Glider**

49 lbs | 38”H x 28”W x 30”D | DBGC  
\$599



**Day Break King Glider**

51 lbs | 38”H x 28”W x 33”D | DBGCK  
\$619



**Day Break 48” Glider Bench**

75 lbs | 38”H x 48”W x 30”D | DBGL48  
\$829



**Day Break Glider Tete-a-Tete**

136 lbs | 38”H x 87”W x 36”D | DBGCTT  
\$1,539



**Day Break King Glider Tete-a-Tete**

139 lbs | 38”H x 87”W x 38”D | DBGCKTT  
\$1,559



*Did you know?*

By the Yard furniture won't splinter, crack, peel, or rot — no matter the season.

GLIDERS

## CHIPPENDALE GLIDERS



### Chippendale Swivel Glider

71 lbs | 36"H x 28"W x 30"D | CHGC-SW

\$719



### Chippendale Glider

50 lbs | 36"H x 28"W x 30"D | CHGC

\$599



### Chippendale King Glider

52 lbs | 36"H x 28"W x 33"D | CHGCK

\$619



### Chippendale 48" Glider Bench

81 lbs | 36"H x 48"W x 30"D | CHGL48

\$829



### Chippendale 60" Glider Bench

116 lbs | 36"H x 60"W x 30"D | CHGL60

\$1,079

*Did you know?*

We use a proprietary blend that's engineered to be the best on the market for strength, durability, and performance.



### Chippendale Glider Tete-a-Tete

138 lbs | 37"H x 87"W x 36"D | CHGC-TT

\$1,539



### Chippendale King Glider Tete-a-Tete

141 lbs | 37"H x 87"W x 38"D | CHGCK-TT

\$1,559



**Emerson Swivel Glider**

70 lbs | 37"H x 28"W x 30"D | EMGC-SW

\$719



**Emerson Glider**

49 lbs | 37"H x 28"W x 30"D | EMGC

\$599



**Emerson King Glider**

51 lbs | 37"H x 28"W x 33"D | EMGCK

\$619



**Emerson 48" Glider Bench**

80 lbs | 37"H x 48"W x 30"D | EMGL48

\$829



**Emerson 60" Glider Bench**

110 lbs | 37"H x 60"W x 30"D | EMGL60

\$1,079

GLIDERS

*Did you know?*

By the Yard furniture is maintenance-free. No painting, staining, or sealing — ever!



**Emerson Glider Tete-a-Tete**

136 lbs | 37"H x 87"W x 36"D | EMGC-TT

\$1,539



**Emerson King Glider Tete-a-Tete**

141 lbs | 37"H x 87"W x 38"D | EMGCK-TT

\$1,559



**Garden Swivel Glider**

69 lbs | 35"H x 28"W x 30"D | GRGC-SW

\$719



**Garden Glider**

48 lbs | 35"H x 28"W x 30"D | GRGC

\$599



**Garden King Glider**

50 lbs | 35"H x 28"W x 33"D | GRGCK

\$619



**Garden 48" Glider Bench**

83 lbs | 35"H x 48"W x 30"D | GRGL48

\$829



**Garden 60" Glider Bench**

115 lbs | 35"H x 60"W x 30"D | GRGL60

\$1,079

*Did you know?*

Each glider is crafted for comfort with contoured seats and ergonomic designs, and each piece is triple hand-checked for quality.



**Garden Glider Tete-a-Tete**

138 lbs | 35"H x 87"W x 36"D | GRGC-TT

\$1,539



**Garden King Glider Tete-a-Tete**

141 lbs | 35"H x 87"W x 38"D | GRGCK-TT

\$1,559

\*Premium wood grain colors priced above base — contact us for details

## GLIDER ACCESSORIES



**Glider Chair Ottoman**

27 lbs | 14"H x 23"W x 20"D | GLOT

\$329



**Glider Bench Ottoman**

38 lbs | 14"H x 36"W x 20"D | DGLOT

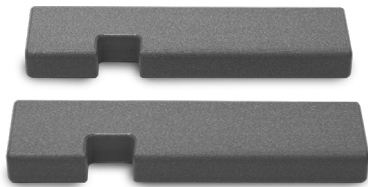
\$399



**Glider Chair Tete-A-Tete Table**

38 lbs | 23"H x 50"W x 26"D | GCTTT

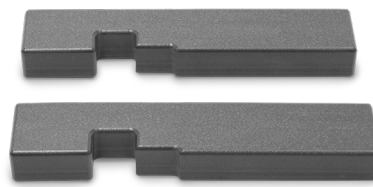
\$399



**Glider Chair Locks**

3 lbs | 2"H x 4"W x 14"D | GCLOCK

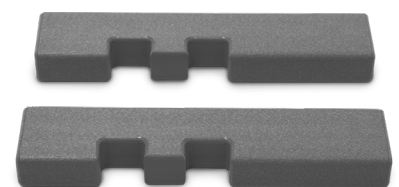
\$39



**Glider 48" Bench Locks**

3 lbs | 2"H x 4"W x 14"D | GLLOCK48

\$39



**Glider 60" Bench Locks**

3 lbs | 2"H x 4"W x 14"D | GLLOCK60

\$39

GLIDERS



*Glider locks enhance versatility and safety.*

# LIGHT IT UP



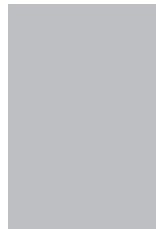
### STEP 1

## CHOOSE A FIRE TABLE SHAPE

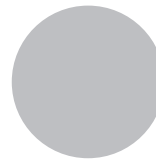
A fire table naturally brings people closer together. A rounded table allows everyone to gather easily, while square tables provide a modern flair to your outdoor space.



Square



Rectangle



Circle



Oval

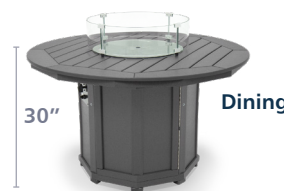
### STEP 2

## CHOOSE A FIRE TABLE HEIGHT

Is your fire table a place to gather under the stars, somewhere to set out drinks and snacks, or maybe where you'll have dinner? Match your table height around your plans and guests' needs.



Coffee



Dining



Counter

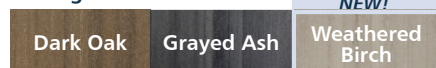


Bar

### STEP 3

## CHOOSE A COLOR

#### Woodgrain Colors



\*Premium wood grain colors priced above base — contact us for details.

#### Solid Colors



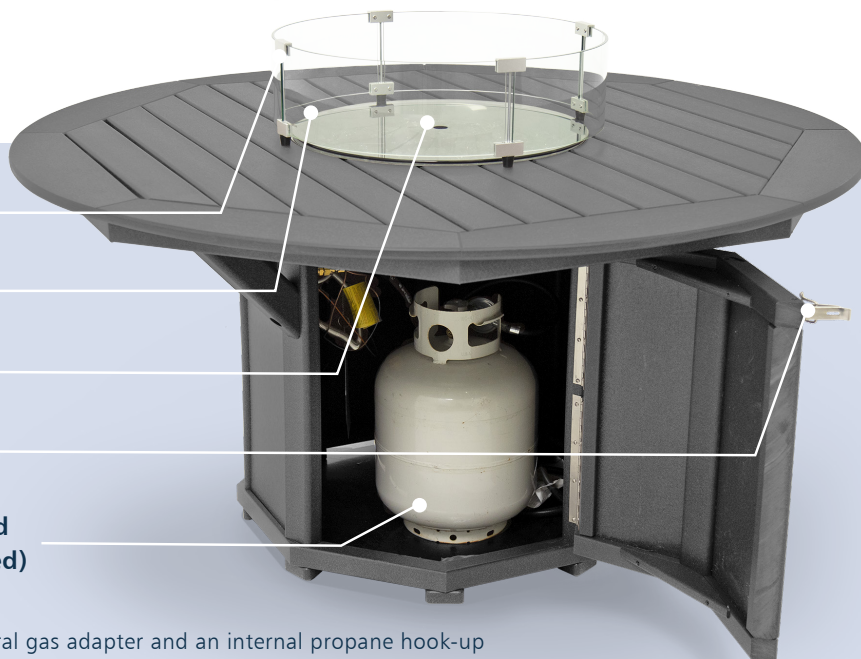
Tempered glass wind guard

Stainless steel fire bowl

55,000 - 80,000+ BTUs

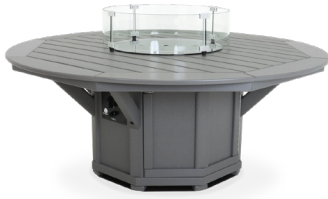
Stainless steel hardware

Interior propane tank hook-up and storage (propane tank not included)



All Fire Tables come equipped with a natural gas adapter and an internal propane hook-up for you to select how best to add a warm glow to your outdoor space.

## FIRE TABLES



### Coffee 58" Round Framed Fire Table

163 lbs | 23"H x 58"Dia | FTC58

\$2,699



### Dining 58" Round Framed Fire Table

Seats 6

177 lbs | 30"H x 58"Dia | FT58

\$3,499



### Counter 58" Round Framed Fire Table

Seats 6

194 lbs | 37"H x 58"Dia | CNFT58

\$3,599



### Bar 58" Round Framed Fire Table

Seats 6

210 lbs | 42"H x 58"Dia | BFT58

\$3,699



28x58 Coffee Fire Table | Sandtone  
FTC2858 | P. 63



### Coffee 51" Round Framed Fire Table

150 lbs | 23"H x 51"Dia | FTC51

\$2,499



### Dining 51" Round Framed Fire Table

Seats 4

150 lbs | 30"H x 51"Dia | FT51

\$3,099



### Counter 51" Round Framed Fire Table

Seats 4

166 lbs | 37"H x 51"Dia | CNFT51

\$3,149



### Bar 51" Round Framed Fire Table

Seats 4

182 lbs | 42"H x 51"Dia | BFT51

\$3,249

\*Premium wood grain colors priced above base — contact us for details



**Dining 44" x 66" Oval Framed Fire Table**

Seats 6

179 lbs | 30"H x 44"W x 66"D | FT4466

\$3,519



**Counter 44" x 66" Oval Framed Fire Table**

Seats 6

189 lbs | 37"H x 44"W x 66"D | CNFT4466

\$3,559



**Bar 44" x 66" Oval Framed Fire Table**

Seats 6

199 lbs | 42"H x 44"W x 66"D | BFT4466

\$3,599



**Coffee 36" x 58" Rectangular Framed Fire Table**

159 lbs | 23"H x 36"W x 58"D | FTC3658

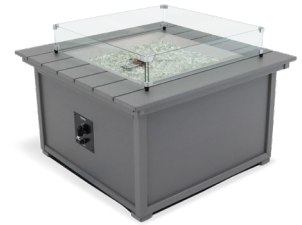
\$2,699



**Coffee 28" x 58" Rectangular Fire Table**

153 lbs | 23"H x 28"W x 58"D | FTC2858

\$2,799



**Coffee 40" x 40" Square Fire Table**

171 lbs | 23"H x 40"W x 40"D | FTC4040

\$2,499

FIRE TABLES



**Coffee 38" Round Framed Fire Table**

108 lbs | 23"H x 38"Dia | FTC38

\$1,799



**94" Farmhouse Fire Table**

286 lbs | 30"H x 94" W x 40"D | FT4094

Seats 8

\$3,999

NEW!

**A Hosts Dream**

With seating for up to 8 people, make every gathering unforgettable. Cozy up and spend more time dining outside all year round.

# CUSHION YOUR COMFORT



Berkshire Deep Seat Cushion Couch | Sandtone | Linen Stone | DSCH0142 | P. 66  
Berkshire Deep Seat Cushion Chair | Sandtone | Linen Stone | DSCHR0142 | P. 66

28x58 Coffee Fire Table | Sandtone | FTC2858 | P. 63  
Square Tiered End Table | Sandtone | SET2323 | P. 90



## MISSION CUSHION FURNITURE



**Deep Seat Cushion Chair With Mission Arms**

80 lbs | 35"H x 36"W x 35"D | DSCCHAIR-MS

\$949



**Swivel Deep Seat Cushion Chair With Mission Arms**

101 lbs | 35"H x 36"W x 35"D | DSCCHAIR-MS-SW

\$1,199



**Swivel Flex Deep Seat Cushion Chair With Mission Arms**

111 lbs | 35"H x 36"W x 35"D | DSCCHAIR-MS-SWRK

\$1,399



**Deep Seat Cushion Bench With Mission Arms**

124 lbs | 35"H x 60"W x 35"D | DSCBENCH-MS

\$1,699



**Deep Seat Cushion Couch With Mission Arms**

165 lbs | 35"H x 86"W x 35"D | DSCCOUCH-MS

\$2,299



**Deep Seat Cushion Ottoman**

24 lbs | 12"H x 25"W x 21"D | DSCOT

\$399

## BERKSHIRE CUSHION FURNITURE



**Berkshire Chair**

NEW!

66 lbs | 30"H x 34"W x 32"D | DSCHR0142

\$899



**Berkshire Bench**

NEW!

108 lbs | 30"H x 59"W x 32"D | DSBN0142

\$1,649



**Berkshire Couch**

NEW!

126 lbs | 30"H x 84"W x 32"D | DSCH0142

\$2,249

## CLASSIC CUSHION FURNITURE



**Deep Seat Cushion Chair With Classic Arms**

60 lbs | 35"H x 31"W x 35"D | DSCCHAIR

\$849



**Swivel Deep Seat Cushion Chair With Classic Arms**

75 lbs | 35"H x 31"W x 35"D | DSCCHAIR-SW

\$1,099



**Swivel Flex Deep Seat Cushion Chair With Classic Arms**

85 lbs | 35"H x 31"W x 35"D | DSCCHAIR-SWRK

\$1,299



**Deep Seat Cushion Bench With Classic Arms**

104 lbs | 35"H x 55"W x 35"D | DSCBENCH

\$1,599



**Deep Seat Cushion Couch With Classic Arms**

148 lbs | 35"H x 81"W x 35"D | DSCCOUCH

\$2,199

CUSHION

Deep Seat Cushion Swivel-Flex Chair with Mission Arms | Dark Oak | Cast Silver | DSCCHAIR-SWRK | P. 66

Deep Seat Cushion Couch with Mission Arms | Dark Oak | Cast Silver | DSCCOUCH | P. 66



28 x 58 Coffee Fire Table | Dark Oak | FTC2858 | P. 63

Traditional Side Table | Dark Oak | TST | P. 89

18x18 Latitude Planter | Dark Oak | PX1818-34 | P. 81

## CUSHION SECTIONAL



### Corner Section

68 lbs | 35"H x 36"W x 36"D | DSCCORNER

\$1,099



### Standard Section

50 lbs | 35"H x 25"W x 34"D | DSCSECTION

\$879



### Classic Arm Set

13 lbs | 26"H x 3"W x 33"D | DSCSAA

*Includes 2 arms.*

\$219



### Mission Arm Set

38 lbs | 26"H x 6"W x 33"D | DSCSAA-MS

*Includes 2 arms.*

\$329



Deep Seat Sectional Cushion Ottoman  
Weathered Wood | Cast Silver | DSCSOT | P. 68



### Deep Seat Sectional Cushion Ottoman

30 lbs | 12"H x 25"W x 21"D | DSCSOT

\$399



**NEW!**

### Rectangular Sectional Table

48 lbs | 25"H x 15"W x 29"D | DSRST0120

\$499



**NEW!**

### Square Sectional Table

73 lbs | 25"H x 29"W x 29"D | DSSST0120

\$599



**NEW!**

### Wedge Sectional Table

55 lbs | 25"H x 36"W x 29"D | DSWST0120

\$499

### Why Our Cushions Are Exceptional

Crafted with premium Sunbrella® solution-dyed acrylic fabrics, our cushions are designed for long-term outdoor comfort. Color runs through the fiber itself, helping maintain its appearance while standing up to sun, moisture, and everyday use. The result is vibrant, low-maintenance comfort season after season.



**Customize Your Sectional:**

1. Decide on your layout preferences.
2. Determine how many seats you want.
3. Choose your arm style (Mission or Classic).
4. Choose your frame and cushion colors.



**Headrest Cushion**

CSHN-HR

\$59



**Seat Cushion**

20"W | CSHN-SC20

\$59

22"W | CSHN-SC22

\$59



**Chaise Lounge Cushion**

CSHN-CL

\$199

CUSHION

SpectrumCherry

Spectrum Denim

Spectrum Indigo

Cast Silver

Cast Slate

Linen Stone

Cast Shale



Cushions available in 7 Sunbrella® colors.  
 \*Foam cushion options available — contact us for details.

# ROCK, SWAY, UNWIND



Chaise Lounge With Wheels | Dark Oak | CLW | P. 89

9' Octagon Umbrella | Black Stripe | Golden Oak | UMFF9OCT | P. 95

72" Storage Box | Dark Oak | STG72-38 | P. 85

Traditional Side Table | Dark Oak | TST | P. 89

## LOUNGES



### Chaise Lounge

74 lbs | 38"H x 30"W x 78"D | CL

\$599



### Chaise Lounge With Wheels

78 lbs | 41"H x 30"W x 78"D | CLW

\$699



### Double Chaise Lounge With Wheels

133 lbs | 41"H x 55"W x 78"D | CLWD

\$1,299



### Latitude Chaise Lounge

100 lbs | 15"H x 27"W x 80"D | CL-2780

*Cushion included.*

\$999

### Latitude Chaise Lounge With Wheels

108 lbs | 15"H x 27"W x 80"D | CLW-2780

*Cushion included.*

\$1,099

## SWINGS



### 48" Garden Swing

56 lbs | 21"H x 48"W x 27"D | SWGR48

\$799



### 60" Garden Swing

89 lbs | 21"H x 60"W x 27"D | SWGR60

\$989

*Garden swings bring classic charm to your front porch, creating a cozy and inviting atmosphere. Each one comes with four 9' stainless steel chains for easy hanging.*

## ADIRONDACK ROCKERS



**Windsor Rocker**

45 lbs | 41"H x 30"W x 35"D | RWCC

\$549



**Adirondack Rocker**

44 lbs | 41"H x 30"W x 33"D | RADLX

\$549



**Sand Creek Rocker**

45 lbs | 40"H x 30"W x 35"D | RSBC

\$549



**Windsor King Rocker**

53 lbs | 44"H x 33"W x 35"D | RWACK

\$579



**Adirondack King Rocker**

53 lbs | 44"H x 33"W x 35"D | RADLXK

\$579



**Sand Creek King Rocker**

51 lbs | 43"H x 33"W x 35"D | RSBCK

\$579

## TRADITIONAL ROCKERS



**Days End Rocker**

44 lbs | 43"H x 29"W x 35"D | RJFKCS

\$499



**Days End With Flat Seat Rocker**

42 lbs | 43"H x 29"W x 35"D | RJFKFS

\$479



**Mission Rocker**

53 lbs | 42"H x 31"W x 33"D | RMSC

\$579

\*Premium wood grain colors priced above base — contact us for details



LOUNGES, SWINGS, ROCKERS

Days End Rocker with Curved Seat | Coffee | RJFKCS | P. 72

Heritage Side Table | Gray | Coffee | P. 90



# PAUSE & RECHARGE

**STEP 1**

# CHOOSE A BENCH HEIGHT

Our benches come in a variety of styles and sizes. Choose your back style and select your length; comfortably accommodating anywhere from 1-4 people on an ergonomic, curved seat. Any of our 60" benches are available with a drop-in table option.



Standard Height



Counter Height

\*Only available in 48" width.

BENCHES

**STEP 2**

# CHOOSE A BENCH WIDTH

How big is your guest list (and space)? We've got benches built for two, three, or four, so everyone can sit by the outdoor pool, table, or garden.

48" Bench



Seats 2

60" Bench



Seats 2-3

72" Bench

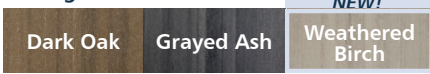


Seats 3-4

**STEP 3**

# CHOOSE A COLOR

Woodgrain Colors



\*Premium wood grain colors priced above base — contact us for details.

Solid Colors



Customize your bench, add a personal touch to your piece with engraving—perfect for memorials, donors, or showcasing your brand. See page 79 for details!

### Horizon Bench



\$829	48"   75 lbs   40"H x 48"W x 28"D   HZB48
\$899	48" Counter Height   84 lbs   43"H x 48"W x 32"D   CNHZB48
\$1,029	60"   107 lbs   40"H x 60"W x 28"D   HZB60
\$1,089	60" Drop-in Table   118 lbs   40"H x 60"W x 28"D   HZB60-DT
\$1,089	72"   114 lbs   40"H x 72"W x 28"D   HZB72



### Capri Bench



\$799	48"   70 lbs   36"H x 48"W x 27"D   CRB48
\$879	48" Counter Height   83 lbs   42"H x 48"W x 32"D   CNCRB48
\$999	60"   89 lbs   36"H x 60"W x 27"D   CRB60
\$1,079	60" Drop-in Table   108 lbs   36"H x 60"W x 27"D   CRB60-DT
\$1,079	72"   99 lbs   36"H x 72"W x 27"D   CRB72



### Garden Bench



\$599	48"   71 lbs   36"H x 48"W x 26"D   GRB48
\$799	48" Counter Height   81 lbs   39"H x 48"W x 32"D   CNGRB48
\$799	60"   95 lbs   36"H x 60"W x 26"D   GRB60
\$899	60" Drop-in Table   111 lbs   36"H x 60"W x 26"D   GRB60-DT
\$899	72"   106 lbs   36"H x 72"W x 26"D   GRB72



### Chippendale Bench



\$799	48"   69 lbs   36"H x 48"W x 27"D   CHB48
\$879	48" Counter Height   82 lbs   41"H x 48"W x 32"D   CNCHB48
\$999	60"   89 lbs   36"H x 60"W x 27"D   CHB60
\$1,079	60" Drop-in Table   108 lbs   36"H x 60"W x 27"D   CHB60-DT
\$1,079	72"   99 lbs   36"H x 72"W x 27"D   CHB72



\*Premium wood grain colors priced above base — contact us for details

**Emerson Bench**



- \$799    48" | 68 lbs | 36"H x 48"W x 27"D | EMB48
- \$879    48" Counter Height | 82 lbs | 41"H x 48"W x 32"D | CNEMB48
- \$999    60" | 90 lbs | 36"H x 60"W x 27"D | EMB60
- \$1,079    60" Drop-in Table | 106 lbs | 36"H x 60"W x 27"D | EMB60-DT
- \$1,079    72" | 96 lbs | 36"H x 72"W x 27"D | EMB72



**Day Break Bench**

- \$799    48" | 65 lbs | 37"H x 48"W x 26"D | DBB48
- \$879    48" Counter Height | 81 lbs | 41"H x 48"W x 32"D | CNDBB48
- \$1,079    72" | 100 lbs | 37"H x 72"W x 26"D | DBB72



**Days End Bench**

- \$849    48" | 72 lbs | 47"H x 48"W x 28"D | JFKB48
- \$1,079    72" | 115 lbs | 47"H x 72"W x 28"D | JFKB72



**Mission Bench**

- \$899    48" | 80 lbs | 45"H x 54"W x 28"D | MSB48
- \$929    King 48" | 85 lbs | 45"H x 54"W x 31"D | MSBK48





NEW!

### Studio Bench

---

- \$799 48" | 65 lbs | 37"H x 48"W x 27"D | STB48
- \$999 60" | 80 lbs | 37"H x 60"W x 27"D | STB60
- \$1,079 72" | 87 lbs | 37"H x 72"W x 27"D | STB72



NEW!

### Backless Bench with Flat Seat

---

- \$459 36" | 35 lbs | 18"H x 36"W x 20"D | BB36F
- \$529 48" | 43 lbs | 18"H x 48"W x 20"D | BB48F
- \$649 48" Counter Height | 54 lbs | 24"H x 48"W x 23"D | CNBB48F
- \$649 60" | 48 lbs | 18"H x 60"W x 20"D | BB60F
- \$769 60" Counter Height | 69 lbs | 24"H x 60"W x 23"D | CNBB60F
- \$769 72" | 71 lbs | 18"H x 72"W x 20"D | BB72F



### Backless Bench with Curved Seat

---

- \$459 36" | 35 lbs | 18"H x 36"W x 20"D | BB36C
- \$529 48" | 43 lbs | 18"H x 48"W x 20"D | BB48C
- \$649 60" | 47 lbs | 18"H x 60"W x 20"D | BB60C
- \$769 72" | 68 lbs | 18"H x 72"W x 20"D | BB72C



### Picnic Table Bench

---

- \$319 34" | 20 lbs | 17"H x 34"W x 12"D | PTB34
- \$459 59" | 38 lbs | 17"H x 59"W x 12"D | PTB59



### Farmhouse Bench

---

- \$649 60" | 57 lbs | 17"H x 60"W x 17"D | FHB60
- \$769 72" | 67 lbs | 17"H x 72"W x 17"D | FHB72



\*Premium wood grain colors priced above base — contact us for details

# ENGRAVING

## STEP 1

### SELECT YOUR FURNITURE: STYLE, COLOR(S), & SIZE

Specify which board(s) will be engraved.

## STEP 2

### CHOOSE YOUR MESSAGE

Compose your message, choose a font and letter style, or provide a logo in a digital format.

Times New Roman | Arial | Comic Sans

Average number of characters for 72" bench is 52, 60" bench is 43, and 48" bench is 33 (include spaces in your count).

## STEP 3

### SUBMIT YOUR FORM

Call 952-219-7070 for more information about engraving. The final engraving form will be sent for your approval. Engraving includes a \$50 setup per item, plus \$5 per character. Image designs may include an additional fee.

*We recommend Garden & Horizon back styles for engraving! See P. 76.*



**Garden Bench**



**Horizon Bench**

# PLANT, GROW, BLOOM

**GARDEN**



**Portable Potting Bench**

125 lbs | 65"H x 55"W x 23"D | PPB

\$1,469



**Portable Potting Table with Shelf**

96 lbs | 56"H x 55"W x 29"D | PPT-S

\$1,599



Legs must be buried 18" for stability.

**Garden Arbor**

120 lbs | 108"H x 76"W x 26"D | ARB

\$1,199



**18" x 43" Rectangular Latitude Planter**

83 lbs | 34"H x 43"W x 18"D | PX1843-34

\$579



**18" x 18" Square Latitude Planter**

43 lbs | 34"H x 18"W x 18"D | PX1818-34

\$419



**Privacy Planter**

185 lbs | 68"H x 60"W x 24"D | PPX2460

\$1,899

**Privacy Planter With Wheels & Metal Frame**

With casters & metal frame \$2,399

185 lbs | 70"H x 60"W x 24"D | PPX2460-W



**Latitude Privacy Planter**

187 lbs | 67"H x 61"W x 21"D | PPX2161

\$1,799



**21" x 39" Latitude Privacy Planter**

128 lbs | 67" H x 39"W x 21"D | PPX2139

\$1,299



**72" Raised Garden**

125 lbs | 36"H x 72"W x 23"D | RG72  
\$1,399



**60" Raised Garden**

113 lbs | 36"H x 60"W x 23"D | RG60  
\$1,299



**45" Raised Garden**

95 lbs | 36"H x 45"W x 23"D | RG45  
\$1,099



**Elevated Planter Box**

66 lbs | 36"H x 39"W x 27"D | EPB  
\$699



**Elevated Planter Stand**

49 lbs | 34"H x 30"W x 12"D | PLS  
\$529



**Backless Planter Bench**

83 lbs | 18"H x 75"W x 24"D | BPLB  
\$899



Left:  
24" Tapered Planter Box | Sandtone-Black | TP24 | P. 83  
18" Tapered Planter Box | Sandtone-Black | TP18 | P. 83

### Planters That Elevate Outdoor Spaces

Our planters offer a simple, durable way to enhance first impressions in commercial environments. Designed to coordinate with our furniture and hold up to outdoor conditions, they help define entrances, soften hardscapes, and create a more welcoming outdoor experience with minimal maintenance.

\*Premium wood grain colors priced above base — contact us for details



**30" Tapered Planter Box**

45 lbs | 30"H x 20"W x 20"D | TP30

\$439



**24" Tapered Planter Box**

42 lbs | 24"H x 20"W x 20"D | TP24

\$399



**18" Tapered Planter Box**

30 lbs | 18"H x 20"W x 20"D | TP18

\$309

GARDEN



**14" x 24" Planter Box**

21 lbs | 14"H x 24"W x 14"D | PX1424

\$169



**18" x 18" Square Planter Box**

22 lbs | 18"H x 18"W x 18"D | PX1818

\$199



**14" x 14" Square Planter Box**

12 lbs | 14"H x 14"W x 14"D | PX1414

\$129



**21" x 21" Square Planter Box With Legs**

42 lbs | 21"H x 21"W x 21"D | PX2121

\$299



Portable Potting Table with Shelf | Sandtone | PPT-S | P. 81

# HOST, SERVE, & STORE



72" Storage Box At 38" High | Sandtone | STG72-38 | P. 85

\*Premium wood grain colors priced above base — contact us for details

## STORAGE & SERVICE



### 72" Storage Box At 38" High

199 lbs | 38"H x 72"W x 25"D | STG72-38  
Fits 5 sets of cushions.

\$2,299



### 56" Storage Box At 38" High

152 lbs | 38"H x 56"W x 25"D | STG56-38  
Fits 3 sets of cushions.

\$2,199



### 56" Storage Box At 18" High

119 lbs | 18"H x 56"W x 25"D | STG56-18  
Great for outdoor toys.

\$1,999



### Patio Cart

51 lbs | 36"H x 35"W x 19"D | PC

\$599



### 32" Serving Table

43 lbs | 34"H x 32"W x 17"D | SVT

\$469



### 48" Serving Table

92 lbs | 34"H x 48"W x 23"D | SVT48

\$799

STORAGE & SERVICE



### Portable Bar

163 lbs | 43"H x 53"W x 26"D | PBAR-D

\$1,999



### Portable Kitchen Cart With White Cutting Board

148 lbs | 37"H x 46"W x 28"D | PKC

\$1,599

Cutting board can be mounted on right or left side.



### Bussing Station

200 lbs | 43"H x 53"W x 24"D | BUSS

\$1,799



**Utility Box**

45 lbs | 31"H x 23"W x 14"D | UTB

\$399



**Towel Locker**

151 lbs | 43"H x 41"W x 25"D | TL

\$999



Includes 32 gal trash can.



**Longitude Square Trash Receptacle**

94 lbs | 40"H x 23"W x 23"D | STREC

\$799



Includes 23 gal trash can.

**Narrow Trash Receptacle  
Small Door Access**

69 lbs | 44"H x 15"W x 26"D | NTREC-SD

\$679



**Portable Podium**

69 lbs | 45"H x 24"W x 24"D | POD

\$999



Includes 32 gal trash can.

**Trash Receptacle**

84 lbs | 43"H x 25"W x 25"D | TREC

\$879



Includes 23 gal trash can.

**Golf Course / Valet Podium**

137 lbs | 47"H x 36"W x 21"D | PODGV

\$1,699

\*Premium wood grain colors priced above base — contact us for details



STORAGE & SERVICE

48" Serving Table | Sandtone | SVT48 | P. 85

# ACCENT WITH STYLE



## ACCENT TABLES & ACCESSORIES



**38" Round Framed Coffee Table**

57 lbs | 18"H x 38"Dia | RFCT38

\$539



**Mission Coffee Table**

42 lbs | 18"H x 40"W x 20"D | MSCT

\$489



**Rectangular Coffee Table**

20 lbs | 14"H x 32"W x 17"D | CT32

\$359



**20" Round End Table**

15 lbs | 20"H x 20"Dia | RET

\$229



**Mission End Table**

30 lbs | 24"H x 20"W x 20"D | MSET

\$339



**Traditional Side Table**

22 lbs | 18"H x 20"W x 17"D | TST

\$229



**Accent Table**

19 lbs | 23"H x 18"W x 14"D | ACT

\$199



**Counter Accent Table**

25 lbs | 30"H x 17"W x 20"D | CNACT

\$279



**Bar Accent Table**

26 lbs | 35"H x 17"W x 20"D | BACT

\$299



**Heritage Coffee Table**

41 lbs | 18"H x 29"W x 29"D | HCT

\$459



**Cambridge Coffee Table**

42 lbs | 18"H x 28"W x 28"D | CCT

\$469



**28" x 50" Rectangular Tiered Coffee Table**

86 lbs | 18"H x 50"W x 28"D | CT2850

\$769



**Heritage Side Table**

20 lbs | 20"H x 22"W x 20"D | HST

\$269



**Cambridge Side Table**

20 lbs | 20"H x 20"W x 20"D | CST

\$269



**23" x 23" Square Tiered End Table**

34 lbs | 22"H x 23"W x 23"D | SET2323

\$299



**Folding Heritage Side Table**

21 lbs | 20"H x 22"W x 20"D | FHST

\$259



**Game Coffee Table**

48 lbs | 18"H x 28"W x 28"D | GCT-CB

\$629



Round End Table | Gray | RET | P. 89

\*Premium wood grain colors priced above base — contact us for details



**Prairie Coffee Table**

21 lbs | 14"H x 36"W x 18"D | PCT  
\$389



**Utility Stool**

19 lbs | 19"H x 21"W x 13"D | US  
\$199



**Mission Foot Stool**

14 lbs | 13"H x 18"W x 14"D | MSFS  
\$189



**Prairie End Table**

13 lbs | 18"H x 18"W x 18"D | PET  
\$229



**16" Foot Stool**

14 lbs | 14"H x 17"W x 16"D | FS  
\$139



**Step Stool**

6 lbs | 8"H x 14"W x 10"D | SS8  
\$119

ACCESSORIES

# ADAPTABLE SPACES

Our folding chairs, side tables, and cornhole boards are designed for commercial environments. Easy to deploy, easy to store, and built to support flexible layouts for events, overflow seating, and shared outdoor spaces.

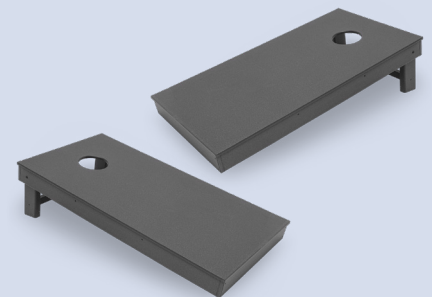


**Folding Chair**

25 lbs | 39"H x 23"W x 29"D | FC  
\$389

**Folding Side Table**

19 lbs | 25"H x 20"W x 14"D | FST  
\$219



**Cornhole Game Boards**

36 lbs | 4"H x 24"W x 48"D | CGB  
Set of two game boards. Bags not included.  
\$599

# FOR YOUR FURRY FAMILY





**Elevated Pet Bed With  
19" x 24" Cushion**

22 lbs | 11"H x 20"W x 26"D | EPBD-1924

\$299



**Elevated Pet Bed With  
21" x 36" Cushion**

32 lbs | 11"H x 22"W x 38"D | EPBD-2136

\$349



**Elevated Pet Bed With  
24" x 42" Cushion**

40 lbs | 11"H x 25"W x 44"D | EPBD-2442

\$399



**4" High Elevated Pet Feeder  
With 2 Small Bowls**

5 lbs | 4"H x 18"W x 10"D | EPFD-4

\$119

Cushion Colors

Gunmetal

Hazelnut

Brown



8" High Elevated Pet Feeder | Sandtone | EPFD-8 | P. 93

19x24 Elevated Pet Bed with Cushion | Weathered Wood | Brown | EPBD-1924 | P. 93



**8" High Elevated Pet Feeder  
With 2 Small Bowls**

8 lbs | 8"H x 18"W x 10"D | EPFD-8

\$129



**12" High Elevated Pet Feeder  
With 2 Medium Bowls**

11 lbs | 12"H x 24"W x 12"D | EPFD-12

\$139



**16" High Elevated Pet Feeder  
With 2 Large Bowls**

13 lbs | 16"H x 24"W x 12"D | EPFD-16

\$149

PET

# ULTIMATE COVERAGE



Counter 38x88 Oval Framed Table | Sandtone | CNOPFT3888 | P. 25  
Studio Counter Swivel-Flex Chair | Sandtone | CNSTC-SWRK | P. 13

Counter Height 60" Backless Bench | Sandtone | CNBB60F | P. 78  
8x10 Rectangular Umbrella | Linen | Carbon | P. 95

# UMBRELLAS

Frankford® umbrellas uses 9 oz. awning grade, 100% solution-dyed acrylic fabric that is waterproof, easy to clean, and mold and mildew resistant. Frankford® umbrellas have been tested successfully in extreme weather and winds up to 40 MPH, however, we strongly recommend closing your umbrella when not in use or when sustained winds exceed 25 MPH.

## WARRANTY

### 7 Year Warranty

Marine-Grade Acrylic Fabrics

### 3 Year Warranty

Crank & Auto Tilt Mechanisms  
Frame Structure

### 2 Year Warranty

Powder Coat Finishes  
on Aluminum Mast

### 1 Year Warranty

Umbrella Bases

### STEP 1

## CHOOSE A SHAPE & SIZE



7.5' Square

\$629



7.5' Octagon

\$599



9' Octagon

\$679



11' Octagon

\$759



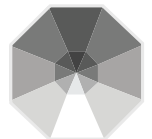
8' x 10'  
Rectangle

\$1,099



10' Square  
Cantilever

\$3,599



13' Octagon  
Cantilever

\$3,599

\*Cantilever only  
available with  
brushed silver pole

### STEP 2

## CHOOSE A POLE COLOR



UMBRELLA

### STEP 3

## CHOOSE A BASE & FINISH COLOR



Requires 12  
additional pavers.  
(Not included)

**Galvanized Steel Cantilever  
Base With Wheels**

80 lbs  
6.5"H x 34"W x 34"D

\$1,299

\*Only available in Silver Mist



**Steel Plate Base**

50 lbs  
3"H x 20"Dia

\$279

\*Other color options available



**Premium Aluminum  
Shell Base With Wheels**

18" Stem | 150 lbs  
3.5"H x 24"Dia

\$899

\*Only available in Silver Mist

18" Stem | 100 lbs  
3.5"H x 24"Dia

\$549

8" Stem | 100 lbs  
3.5"H x 24"Dia

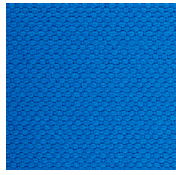
\$549

**STEP 4**

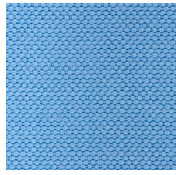
# CHOOSE A COLOR



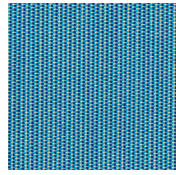
Captain Navy



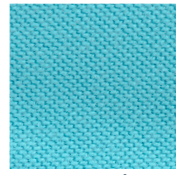
Pacific Blue



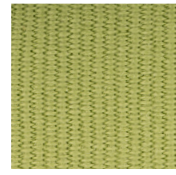
Steel Blue



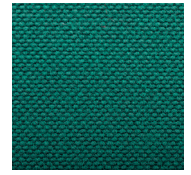
Sapphire



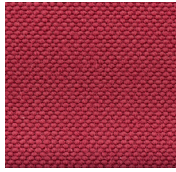
Turquoise



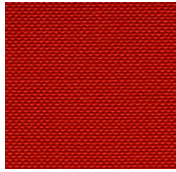
Pistachio



Forest Green



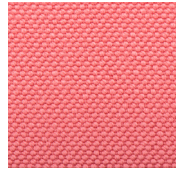
Burgundy



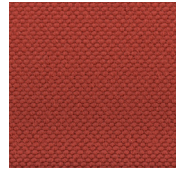
Vermillion



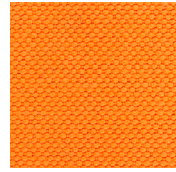
Logo red



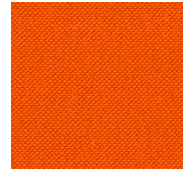
Salmon



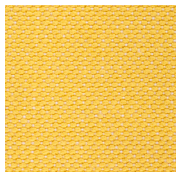
Chestnut



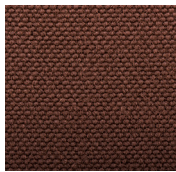
Orange



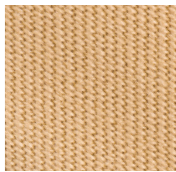
Pumpkin



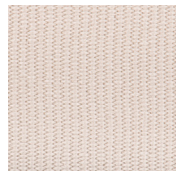
Yellow



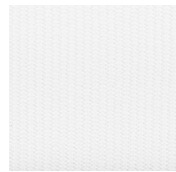
Brown



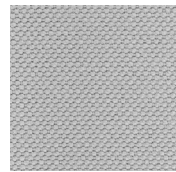
Beige



Linen



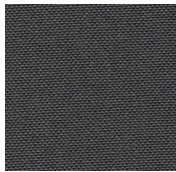
White



Cadet Gray



Titanium



Charcoal Gray



Black

## ACCESSORIES

### 43" Pole Extender

For counter height tables

\$39

### 47" Pole Extender

For bar height tables

\$39

## FEATURES



### Auto Tilt

Crank to open tilt



Design your own umbrella in an immersive 3D space.



UMBRELLA

9" Octagon Umbrella | Yellow | Brushed Silver | P. 95

100lb Premium Aluminum Base with Wheels | Silver Mist | P. 95

# SUPPORT THAT LASTS AS LONG AS OUR FURNITURE

*Our furniture is built to last for decades, and our support follows the same philosophy. When you have a question, need a replacement part, or want help long after your purchase, you'll talk to real people who know our products and stand behind how they're made. No scripts. No handoffs. Just practical help when you need it.*



## LIMITED 15-YEAR WARRANTY

By the Yard was founded on the idea of building exceptionally durable, timeless outdoor furniture out of recycled plastic. When something is going to be around for a long time, it needs to be right. That's why we make our furniture to the highest of quality standards and pay attention to the little things that make it structurally sound and exceptionally comfortable. We believe in our product and stand behind our warranty. Once you purchase from By the Yard, you become a valued member of our family!

### Limited 15-year Commercial Warranty on our Materials and Workmanship

By the Yard is committed to producing high quality furniture and will warrant its products to the original purchaser for 15 years from the original date of invoice. That means that you can count on our furniture not decaying, rotting, cracking, or splintering and that you will never need to paint, stain or seal your furniture.

### General Warranty Conditions & Exclusions

By the Yard products are made with UV stabilizers to minimize fading; however, upon prolonged exposure to the sun all colors may fade to some degree. It is also possible that the Xylan coated stainless steel hardware, swivel mechanisms, and flex mechanisms can show some rust over time in certain climates. While this is not ideal, it will not affect the integrity or the strength of the hardware.

See [bytheyard.net](https://bytheyard.net) for full warranty, terms and conditions.

## ECO-FRIENDLY CLEANING TIPS

At By the Yard we clean our furniture by simply using soap and water on a regular basis...and we recommend that you do the same. A pressure washer on the "fan" setting can be used if necessary (especially on white furniture) but be very careful not to get closer than 24 inches! Any non-abrasive cleaner can also be used, including bleach to sanitize or disinfect.



# DELIVERY SERVICE COMPARISON

Service Type	What You Get	Best For	Key Benefits
<b>Carton Delivery</b>	Furniture shipped in protective cartons	Properties with on-site maintenance or facilities teams	Most cost-effective; flexible assembly timing; easy to store until installation
<b>Standard Delivery</b>	Assembled delivery within local delivery zones	Commercial sites with receiving areas or staff to place items in a secure area	Straightforward and efficient; ideal for bulk orders; keeps freight costs low
<b>Assembled Delivery</b>	Furniture arrives fully assembled	Communities or businesses needing quick setup	Saves time and labor; ready to place immediately; reduces assembly errors
<b>White Glove Delivery</b>	Full-service delivery with placement and debris removal	Turnkey projects needing a polished presentation	Hassle-free installation; professional placement; debris removal; premium experience



All orders will ship F.O.B. factory unless otherwise noted and returns may be subject to a restocking charge. The prices in this catalog are based on current raw material costs and are subject to change without notice. All photos, illustrations, colors, dimensions & specifications are based on latest product information. By the Yard Inc. reserves the right to change or modify any product offering or specification at any time without notification. Any variation to color may be due to the printing process. All products are subject to availability. **BTY | 2026**



**By the Yard**  
MAINTENANCE-FREE  
♻️ OUTDOOR FURNITURE



Scan the QR code to find a showroom near you.

Questions? Contact [commercialsales@bytheyard.net](mailto:commercialsales@bytheyard.net)

Shop online at [bytheyard.net](http://bytheyard.net)

Contact us at 952-219-7070



Visit one of our showrooms in Jordan MN, Maple Grove MN, Woodbury MN, or Oconomowoc WI, Frisco TX.