

2026 Summer



By the Yard

MAINTENANCE-FREE
OUTDOOR FURNITURE

bytheyard.net | 952-219-7070

TABLE OF CONTENTS

Features & Benefits	3	Lounges, Swings, Rockers	70
13 UV-Stabilized Colors	5	Benches	74
Chairs	6	Engraving	79
Tables	22	Garden	80
Adirondacks	34	Storage & Service	84
Tete-a-Tetes	40	Accent Tables & Accessories	88
Gliders	44	Pet	92
Fire Tables.....	60	Umbrellas	94
Cushion Furniture.....	64	Warranty & Delivery	98



OUTDOOR FURNITURE BUILT THE WAY IT SHOULD BE.

We believe outdoor furniture should earn its place in your life. It should feel solid, steady, and comfortable every time you sit down. It should look good season after season. And it should be built by people who take pride in doing things the right way. That standard guides every piece we make.

American Craft. Ready for Real-World Weather.

We build our furniture in Minnesota, where the weather is never neutral. Long winters, strong sun, humidity, and big temperature swings shape how we design and engineer each piece. That approach has been proven for more than 30 years in climates across the country. From the heat and sun of Texas to coastal salt air, our materials and construction methods are chosen for stable performance in demanding environments.

ENGINEERED FOR THE LONG VIEW.

We refine each design for consistent comfort and reliable performance. Heavy-gauge aluminum supports key pieces. Premium 316 stainless steel hardware adds stability, and color matched finishes help maintain a clean, cohesive appearance. Every detail has a purpose.

Premium HDPE, Decades in the Making.

Our proprietary poly lumber resists moisture, stands up to the elements, and cleans easily. The color goes through, so normal wear stays discreet. By controlling both the material and the process, we create furniture that feels substantial and dependable without demanding ongoing upkeep.

Built One Order at a Time.

Your furniture is made for you by craftspeople who measure, assemble, finish, and inspect each piece with care. It takes more time, but it creates consistency and pride that mass production cannot match.

What this adds up to is simple. Furniture that stands up to the elements. Comfort you can count on. A long-term upgrade to your outdoor space.

With By the Yard, life is better outdoors!



BETTER BY DESIGN, BUILT FOR YOU

Quality and attention to details that you can *SEE* and *FEEL*.



Maintenance-free



No painting - *EVER*



Easy clean



All weather - no winter storage



UV-stabilized lumber & colors



Sustainably Recycled Plastic



Bleach Cleanable



Marine Grade



Operational Savings



Find our newest products online.

We've added even more to our collection! Visit our site to shop our newest styles for 2026.

DESIGNED TO LOOK GOOD. BUILT TO HOLD UP.

13 UV-Protected Colors

Over 600 styles and designs available in 13 colors with hundreds of color combinations available.

Standard Two-Tone Combinations

Balanced, intentional pairings that highlight each piece without feeling busy or trend-driven.

See the Colors in Your Space

Over 600 styles and designs available in 13 colors with hundreds of color combinations available.



Get color samples.

Scan the QR code to visit bytheyard.net or call 952-219-7070.

Coverage You Can Count On — 15-Year Commercial Warranty

Warranty coverage that reflects decades of experience building furniture for real outdoor use.



Woodgrains

NEW!

Weathered Birch

Dark Oak

Grayed Ash

White

Sandtone

Weathered Wood

Brown

Redwood

Green

Gray

Coffee

Midnight Blue

Black

Solid Colors

Standard Two-Tones

Gray & Sandtone

Coffee & Brown

Sandtone & Black

Weathered Wood & Coffee

Gray & Black

*Premium woodgrain colors priced above base— contact us for details.



Bar Counter Armless Villa Chair | Sandtone | BAVC | P. 18
Bar 36" Heritage Square Table | Sandtone-Coffee | CNST36 | P. 28

STEP 1

CHOOSE A BACK STYLE

Back design influences comfort and posture across a wide range of users. More supportive backs work well for dining and extended seating, while simpler profiles are well suited for higher-traffic environments.



STEP 2

CHOOSE A CHAIR HEIGHT

Seat height shapes accessibility and circulation, dining height offers the most flexibility, while counter and bar heights suit defined spaces with elevated sightlines.



STEP 3

CHOOSE YOUR MOTION

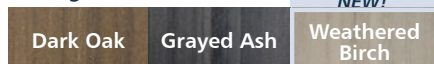
Motion affects stability, durability, and space efficiency: stationary chairs deliver consistent performance, while swivel and swivel-flex options enhance access and comfort.



STEP 4

CHOOSE A COLOR

Woodgrain Colors



*Premium woodgrain colors priced above base — contact us for details.

Solid Colors



DAYS END CHAIRS



Dining Days End Stationary

S | 37 lbs | 46"H x 26"W x 30"D | JFKC-20
W | 39 lbs | 46"H x 28"W x 30"D | JFKC
\$419



Dining Days End Swivel

S | 54 lbs | 46"H x 26"W x 30"D | JFKC-20-SW
W | 56 lbs | 46"H x 28"W x 30"D | JFKC-SW
\$539



Dining Days End Swivel-Flex

S | 62 lbs | 46"H x 26"W x 30"D | JFKC-20-SWRK
W | 64 lbs | 46"H x 28"W x 30"D | JFKC-SWRK
\$589

MISSION CHAIRS



Dining Mission Stationary

S | 37 lbs | 45"H x 26"W x 30"D | MSDC-20
W | 39 lbs | 45"H x 28"W x 30"D | MSDC
\$419



Dining Mission Swivel

S | 53 lbs | 45"H x 26"W x 30"D | MSDC-20-SW
W | 55 lbs | 45"H x 28"W x 30"D | MSDC-SW
\$539



Dining Mission Swivel-Flex

S | 61 lbs | 45"H x 26"W x 30"D | MSDC-20-SWRK
W | 63 lbs | 45"H x 28"W x 30"D | MSDC-SWRK
\$589

WINDSOR CHAIRS



Dining Windsor Stationary

S | 40 lbs | 46"H x 26"W x 30"D | WDC-20
W | 42 lbs | 46"H x 28"W x 30"D | WDC
\$419



Dining Windsor Swivel

S | 48 lbs | 46"H x 26"W x 30"D | WDC-20-SW
W | 50 lbs | 46"H x 28"W x 30"D | WDC-SW
\$539



Dining Windsor Swivel-Flex

S | 59 lbs | 46"H x 26"W x 30"D | WDC-20-SWRK
W | 61 lbs | 46"H x 28"W x 30"D | WDC-SWRK
\$589

DAY BREAK CHAIRS



Dining Day Break Stationary

S | 35 lbs | 37"H x 26"W x 28"D | DBC-20
W | 37 lbs | 37"H x 28"W x 28"D | DBC

\$419



Dining Day Break Swivel

S | 49 lbs | 37"H x 26"W x 28"D | DBC-20-SW
W | 51 lbs | 37"H x 28"W x 28"D | DBC-SW

\$539



Dining Day Break Swivel-Flex

S | 54 lbs | 37"H x 26"W x 28"D | DBC-20-SWRK
W | 56 lbs | 37"H x 28"W x 28"D | DBC-SWRK

\$589



Counter Day Break Stationary

40 lbs | 46"H x 26"W x 30"D | CNDBC

\$439



Counter Day Break Swivel

55 lbs | 46"H x 26"W x 30"D | CNDBC-SW

\$559



Counter Day Break Swivel-Flex

60 lbs | 46"H x 26"W x 30"D | CNDBC-SWRK

\$609



Bar Day Break Stationary

42 lbs | 50"H x 26"W x 30"D | BDDBC

\$449



Bar Day Break Swivel

60 lbs | 50"H x 26"W x 30"D | BDDBC-SW

\$569



Bar Day Break Swivel-Flex

65 lbs | 50"H x 26"W x 30"D | BDDBC-SWRK

\$619

Choose between our dining height standard width, the top choice for most settings, or the wide option for a roomier, more relaxed seating experience. Both are designed to deliver exceptional comfort and style.

HORIZON CHAIRS



Dining Horizon Stationary

S | 40 lbs | 39"H x 26"W x 28"D | HZC-20
W | 42 lbs | 39"H x 28"W x 28"D | HZC

\$419



Dining Horizon Swivel

S | 48 lbs | 39"H x 26"W x 28"D | HZC-20-SW
W | 50 lbs | 39"H x 28"W x 28"D | HZC-SW

\$539



Dining Horizon Swivel-Flex

S | 59 lbs | 39"H x 26"W x 28"D | HZC-20-SWRK
W | 61 lbs | 39"H x 28"W x 28"D | HZC-SWRK

\$589



Counter Horizon Stationary

43 lbs | 47"H x 26"W x 30"D | CNHZC

\$439



Counter Horizon Swivel

58 lbs | 47"H x 26"W x 30"D | CNHZC-SW

\$559



Counter Horizon Swivel-Flex

63 lbs | 47"H x 26"W x 30"D | CNHZC-SWRK

\$609



Bar Horizon Stationary

45 lbs | 52"H x 26"W x 30"D | BHZC

\$449



Bar Horizon Swivel

62 lbs | 52"H x 26"W x 30"D | BHZC-SW

\$569



Bar Horizon Swivel-Flex

68 lbs | 52"H x 26"W x 30"D | BHZC-SWRK

\$619

WINSTEAD CHAIRS



Dining Winstead Stationary

S | 36 lbs | 38"H x 26"W x 25"D | WNC-20
W | 38 lbs | 38"H x 28"W x 25"D | WNC

\$419



Dining Winstead Swivel

S | 49 lbs | 38"H x 26"W x 25"D | WNC-20-SW
W | 51 lbs | 38"H x 28"W x 25"D | WNC-SW

\$539



Dining Winstead Swivel-Flex

S | 55 lbs | 38"H x 26"W x 25"D | WNC-20-SWRK
W | 57 lbs | 38"H x 28"W x 25"D | WNC-SWRK

\$589



Counter Winstead Stationary

41 lbs | 46"H x 26"W x 25"D | CNWNC

\$439



Counter Winstead Swivel

56 lbs | 46"H x 26"W x 25"D | CNWNC-SW

\$559



Counter Winstead Swivel-Flex

61 lbs | 46"H x 26"W x 25"D | CNWNC-SWRK

\$609



Bar Winstead Stationary

43 lbs | 51"H x 26"W x 25"D | BWNC

\$449



Bar Winstead Swivel

60 lbs | 51"H x 26"W x 25"D | BWNC-SW

\$569



Bar Winstead Swivel-Flex

66 lbs | 51"H x 26"W x 25"D | BWNC-SWRK

\$619

AD-BACK CHAIRS



Dining Ad-Back Stationary

S | 37 lbs | 38"H x 26"W x 26"D | AXC-20
W | 39 lbs | 38"H x 28"W x 26"D | AXC

\$419



Dining Ad-Back Swivel

S | 55 lbs | 38"H x 26"W x 26"D | AXC-20-SW
W | 57 lbs | 38"H x 28"W x 26"D | AXC-SW

\$539



Dining Ad-Back Swivel-Flex

S | 57 lbs | 38"H x 26"W x 26"D | AXC-20-SWRK
W | 59 lbs | 38"H x 28"W x 26"D | AXC-SWRK

\$589



Counter Ad-Back Stationary

42 lbs | 47"H x 26"W x 29"D | CNAXC

\$439



Counter Ad-Back Swivel

57 lbs | 47"H x 26"W x 29"D | CNAXC-SW

\$559



Counter Ad-Back Swivel-Flex

62 lbs | 47"H x 26"W x 29"D | CNAXC-SWRK

\$609



Bar Ad-Back Stationary

44 lbs | 51"H x 26"W x 29"D | BAXC

\$449



Bar Ad-Back Swivel

61 lbs | 51"H x 26"W x 29"D | BAXC-SW

\$569



Bar Ad-Back Swivel-Flex

S | 67 lbs | 51"H x 26"W x 29"D | BAXC-SWRK

\$619

Swivel chairs make maneuvering around a table effortless. Instead of moving the chair, simply rotate to get in and out with ease, perfect for tight spaces and a seamless dining experience.

STUDIO CHAIRS

CHAIRS



Dining Studio Stationary

S | 36 lbs | 37"H x 26"W x 28"D | STC-20
W | 38 lbs | 37"H x 28"W x 28"D | STC

\$419



Dining Studio Swivel

S | 49 lbs | 37"H x 26"W x 28"D | STC-20-SW
W | 51 lbs | 37"H x 28"W x 28"D | STC-SW

\$539



Dining Studio Swivel-Flex

S | 55 lbs | 37"H x 26"W x 28"D | STC-20-SWRK
W | 57 lbs | 37"H x 28"W x 28"D | STC-SWRK

\$589



Counter Studio Stationary

41 lbs | 45"H x 26"W x 30"D | CNSTC

\$439



Counter Studio Swivel

56 lbs | 45"H x 26"W x 30"D | CNSTC-SW

\$559



Counter Studio Swivel-Flex

61 lbs | 45"H x 26"W x 30"D | CNSTC-SWRK

\$609



Bar Studio Stationary

43 lbs | 50"H x 26"W x 30"D | BSTC

\$449



Bar Studio Swivel

60 lbs | 50"H x 26"W x 30"D | BSTC-SW

\$569



Bar Studio Swivel-Flex

66 lbs | 50"H x 26"W x 30"D | BSTC-SWRK

\$619

Take your comfort up a notch with a perfectly fitted seat cushion.

See which one is the perfect fit for you at bytheyard.net or call **952-219-7070!**

See color options on P. 69



Seat Cushion

20"W | CSHN-SC20

\$79

22"W | CSHN-SC22

\$79

CAPRI CHAIRS



Dining Capri Stationary

S | 36 lbs | 37"H x 26"W x 28"D | CRC-20
 W | 38 lbs | 37"H x 28"W x 28"D | CRC
 \$419



Dining Capri Swivel

S | 49 lbs | 37"H x 26"W x 28"D | CRC-20-SW
 W | 51 lbs | 37"H x 28"W x 28"D | CRC-SW
 \$539



Dining Capri Swivel-Flex

S | 55 lbs | 37"H x 26"W x 28"D | CRC-20-SWRK
 W | 57 lbs | 37"H x 28"W x 28"D | CRC-SWRK
 \$589



Counter Capri Stationary

41 lbs | 45"H x 26"W x 30"D | CNCRC
 \$439



Counter Capri Swivel

56 lbs | 45"H x 26"W x 30"D | CNCRC-SW
 \$559



Counter Capri Swivel-Flex

61 lbs | 45"H x 26"W x 30"D | CNCRC-SWRK
 \$609



Bar Capri Stationary

43 lbs | 50"H x 26"W x 30"D | BCRC
 \$449



Bar Capri Swivel

60 lbs | 50"H x 26"W x 30"D | BCRC-SW
 \$569



Bar Capri Swivel-Flex

66 lbs | 50"H x 26"W x 30"D | BCRC-SWRK
 \$619

S=Standard Seat | W=Wide Seat

*Premium woodgrain colors priced above base — contact us for details

GARDEN CHAIRS



Dining Garden Stationary

S | 33 lbs | 34"H x 26"W x 27"D | GRC-20
W | 35 lbs | 34"H x 28"W x 27"D | GRC

\$419



Dining Garden Swivel

S | 41 lbs | 34"H x 26"W x 27"D | GRC-20-SW
W | 43 lbs | 34"H x 28"W x 27"D | GRC-SW

\$539



Dining Garden Swivel-Flex

S | 53 lbs | 34"H x 26"W x 27"D | GRC-20-SWRK
W | 55 lbs | 34"H x 28"W x 27"D | GRC-SWRK

\$589



Counter Garden Stationary

39 lbs | 43"H x 26"W x 29"D | CNGRC

\$439



Counter Garden Swivel

54 lbs | 43"H x 26"W x 29"D | CNGRC-SW

\$559



Counter Garden Swivel-Flex

59 lbs | 43"H x 26"W x 29"D | CNGRC-SWRK

\$609



Bar Garden Stationary

41 lbs | 47"H x 26"W x 29"D | BGRC

\$449



Bar Garden Swivel

58 lbs | 47"H x 26"W x 29"D | BGRC-SW

\$569



Bar Garden Swivel-Flex

64 lbs | 47"H x 26"W x 29"D | BGRC-SWRK

\$619

CHIPPENDALE CHAIRS



Dining Chippendale Stationary

S | 35 lbs | 37"H x 26"W x 28"D | CHC-20
W | 37 lbs | 37"H x 28"W x 28"D | CHC

\$419



Dining Chippendale Swivel

S | 46 lbs | 37"H x 26"W x 28"D | CHC-20-SW
W | 48 lbs | 37"H x 28"W x 28"D | CHC-SW

\$539



Dining Chippendale Swivel-Flex

S | 52 lbs | 37"H x 26"W x 28"D | CHC-20-SWRK
W | 54 lbs | 37"H x 28"W x 28"D | CHC-SWRK

\$589



Counter Chippendale Stationary

41 lbs | 45"H x 26"W x 30"D | CNCHC

\$439



Counter Chippendale Swivel

56 lbs | 45"H x 26"W x 30"D | CNCHC-SW

\$559



Counter Chippendale Swivel-Flex

61 lbs | 45"H x 26"W x 30"D | CNCHC-SWRK

\$609



Bar Chippendale Stationary

43 lbs | 50"H x 26"W x 30"D | BCHC

\$449



Bar Chippendale Swivel

60 lbs | 50"H x 26"W x 30"D | BCHC-SW

\$569



Bar Chippendale Swivel-Flex

66 lbs | 50"H x 26"W x 30"D | BCHC-SWRK

\$619

EMERSON CHAIRS



Dining Emerson Stationary

S | 32 lbs | 37"H x 26"W x 28"D | EMC-20
W | 34 lbs | 37"H x 28"W x 28"D | EMC

\$419



Dining Emerson Swivel

S | 50 lbs | 37"H x 26"W x 28"D | EMC-20-SW
W | 52 lbs | 37"H x 28"W x 28"D | EMC-SW

\$539



Dining Emerson Swivel-Flex

S | 54 lbs | 37"H x 26"W x 28"D | EMC-20-SWRK
W | 56 lbs | 37"H x 28"W x 28"D | EMC-SWRK

\$589



Counter Emerson Stationary

40 lbs | 45"H x 26"W x 30"D | CNEMC

\$439



Counter Emerson Swivel

55 lbs | 45"H x 26"W x 30"D | CNEMC-SW

\$559



Counter Emerson Swivel-Flex

60 lbs | 45"H x 26"W x 30"D | CNEMC-SWRK

\$609



Bar Emerson Stationary

42 lbs | 50"H x 26"W x 30"D | BEMC

\$449



Bar Emerson Swivel

59 lbs | 50"H x 26"W x 30"D | BEMC-SW

\$569



Bar Emerson Swivel-Flex

65 lbs | 50"H x 26"W x 30"D | BEMC-SWRK

\$619

Comfort That Moves With You

Swivel-flex chairs offer smooth rotation and a flexible design, combining effortless movement with enhanced comfort. Perfect for extended seating and enjoying outdoor moments to the fullest.

ARMLESS VILLA CHAIRS



Dining Armless Villa Stationary

25 lbs | 36"H x 18"W x 22"D | AVC

\$309



Counter Armless Villa Stationary

31 lbs | 42"H x 18"W x 22"D | CNAVC

\$339



Bar Armless Villa Stationary

33 lbs | 48"H x 18"W x 22"D | BAVC

\$349

STUDIO BALCONY CHAIRS



NEW!

Dining Studio Balcony Stationary

30 lbs | 35"H x 23"W x 23"D | STC-18

\$329



NEW!

Counter Studio Balcony Stationary

36 lbs | 43"H x 23"W x 23"D | CNSTC-18

\$369



NEW!

Bar Studio Balcony Stationary

39 lbs | 48"H x 23"W x 23"D | BSTC-18

\$379

STUDIO ARMLESS CHAIRS



NEW!

Dining Studio Armless Chair

25 lbs | 35"H x 18"W x 23"D | ASTC-18

\$319



NEW!

Counter Studio Armless Chair

32 lbs | 43"H x 18"W x 23"D | CNASTC-18

\$359



NEW!

Bar Studio Armless Chair

34 lbs | 48"H x 18"W x 23"D | BASTC-18

\$369

Big Comfort, Small Footprint

Even small spaces deserve a great seat. Our Studio Collection brings the same comfort and craftsmanship to make every square foot count. Available in standard armed or armless styles, ideal for hotel balconies and restaurant patios.

STOOLS



Dining Parlor Stool

19 lbs | 26"H x 15"W x 17"D | PDHS

\$269



Counter Parlor Stool

29 lbs | 34"H x 15"W x 17"D | CNPHS

\$279



Bar Parlor Stool

31 lbs | 40"H x 15"W x 17"D | BPHS

\$289



Dining Stool

12 lbs | 17"H x 15"W x 14"D | DHS

\$219



Counter Stool

13 lbs | 24"H x 15"W x 14"D | CNHS

\$229



Bar Stool

15 lbs | 30"H x 15"W x 14"D | BHS

\$239



Dining Swivel Stool

16 lbs | 17"H x 15"W x 14"D | DHS-SW

\$259



Counter Swivel Stool

21 lbs | 24"H x 15"W x 14"D | CNHS-SW

\$269



Bar Swivel Stool

23lbs | 30"H x 15"W x 14"D | BHS-SW

\$279



Dining Saddle Stool

10 lbs | 17"H x 17"W x 12"D | DSD

\$219



Counter Saddle Stool

15 lbs | 24"H x 17"W x 12"D | CNSD

\$229



Bar Saddle Stool

16 lbs | 30"H x 17"W x 12"D | BSD

\$239

MISSION ARMCHAIRS

*Mission armchairs will not tuck under dining tables.



Mission Armchair

39 lbs | 45"H x 26"W x 30"D | MSC-20

\$529



Mission Wide Armchair

52 lbs | 45"H x 33"W x 28"D | MSC

\$539

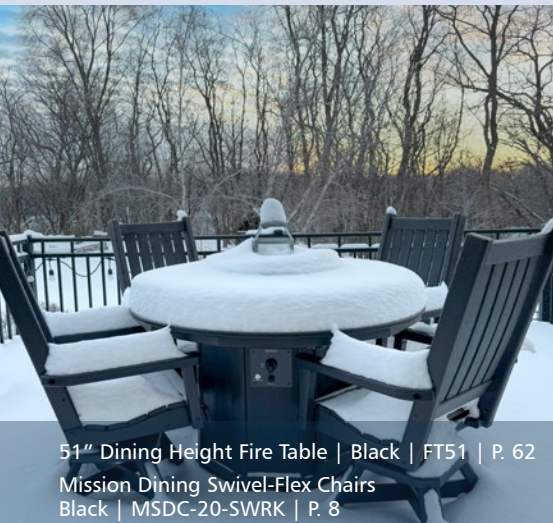


Mission King Armchair

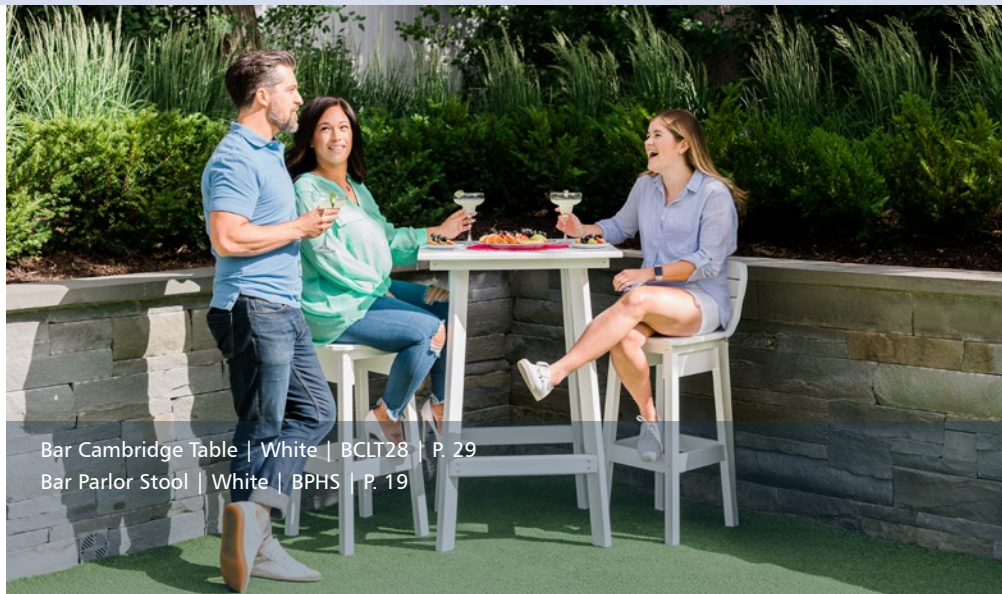
59 lbs | 45"H x 33"W x 31"D | MSCK

\$569

Our Mission Arm Chairs are the perfect complement to our coffee and side tables, creating a cohesive and stylish setting for any outdoor space – See P. 88.



51" Dining Height Fire Table | Black | FT51 | P. 62
Mission Dining Swivel-Flex Chairs
Black | MSDC-20-SWRK | P. 8



Bar Cambridge Table | White | BCLT28 | P. 29
Bar Parlor Stool | White | BPHS | P. 19



17x57 Counter Height Balcony Table | Grayed Ash | CNBT1757 | P. 32
Counter Studio Balcony Chair | Grayed Ash | CNSTC-18 | P. 18

GATHER 'ROUND



Counter Studio Armless Chair | Brown | BASTC-18 | P. 18
Counter 28" x 58" Rectangular Framed Table | Brown | BT2858 | P.

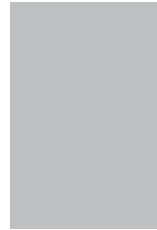
STEP 1

CHOOSE A TABLE SHAPE

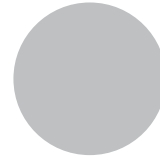
Look beyond the table and consider the area and uses. Round tables are nice for tight spaces with less room to move about. However, squared corners create more usable space at the table.



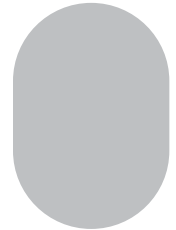
Square



Rectangle



Circle



Oval

STEP 2

CHOOSE A SEATING CAPACITY

People usually think big, but a small table can create an inviting setting for two to four people. Of course, big tables are a must for large families and gatherings with lots of guests to accommodate.



Seat 2



Seat 6



Seat 4



Seat 8

STEP 3

CHOOSE A HEIGHT

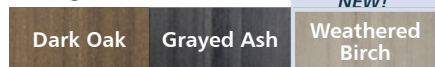
Do you want to stand or sit and relax? Can everyone use a high seat, or should you accommodate kids, seniors, or people with disabilities? A table's height plays a big role in who can use a table and how.



STEP 4

CHOOSE A COLOR

Woodgrain Colors



*Premium woodgrain colors priced above base — contact us for details.

Solid Colors



TABLES



Dining 44" x 122" Oval Framed Table

Seats 8-10

247 lbs | 30"H x 44"W x 122"D | OPFT44122

\$3,599



Counter 44" x 122" Oval Framed Table

Seats 8-10

262 lbs | 37"H x 44"W x 122"D | CNOPT44122

\$3,799



Bar 44" x 122" Oval Framed Table

Seats 8-10

268 lbs | 42"H x 44"W x 122"D | BOPFT44122

\$3,899



Dining 46" x 88" Oval Table

Seats 6

180 lbs | 30"H x 46"W x 88"D | OPT4688

\$2,099



Counter 46" x 88" Oval Table

Seats 6

188 lbs | 37"H x 46"W x 88"D | CNOPT4688

\$2,199



Bar 46" x 88" Oval Table

Seats 6

192 lbs | 42"H x 46"W x 88"D | BOPT4688

\$2,249



Dining 44" x 88" Oval Framed Table

Seats 6

175 lbs | 30"H x 44"W x 88"D | OPFT4488

\$2,549



Counter 44" x 88" Oval Framed Table

Seats 6

183 lbs | 37"H x 44"W x 88"D | CNOPT4488

\$2,649



Bar 44" x 88" Oval Framed Table

Seats 6

187 lbs | 42"H x 44"W x 88"D | BOPFT4488

\$2,699

*Premium woodgrain colors priced above base — contact us for details



**Dining 38" x 88" Oval
Framed Table**

Seats 6

156 lbs | 30"H x 38"W x 88"D | OPFT3888

\$2,399



**Counter 38" x 88" Oval
Framed Table**

Seats 6

164 lbs | 37"H x 38"W x 88"D | CNOPFT3888

\$2,499



**Bar 38" x 88" Oval
Framed Table**

Seats 6

168 lbs | 42"H x 38"W x 88"D | BOPFT3888

\$2,549

TABLES



**Dining 44" x 66" Oval
Framed Table**

Seats 4-6

138 lbs | 30"H x 44"W x 66"D | OPFT4466

\$2,099



**Counter 44" x 66" Oval
Framed Table**

Seats 4-6

152 lbs | 37"H x 44"W x 66"D | CNOPFT4466

\$2,199



**Bar 44" x 66" Oval
Framed Table**

Seats 4-6

156 lbs | 42"H x 44"W x 66"D | BOPFT4466

\$2,249



**Dining 46" x 65"
Oval Table**

Seats 4-6

138 lbs | 30"H x 46"W x 65"D | OPT4665

\$1,699



**Counter 46" x 65"
Oval Table**

Seats 4-6

143 lbs | 37"H x 46"W x 65"D | CNOPT4665

\$1,799



**Bar 46" x 65"
Oval Table**

Seats 4-6

147 lbs | 42"H x 46"W x 65"D | BOPT4665

\$1,849



Dining 38" x 66" Oval Framed Table

Seats 4-6

121 lbs | 30"H x 38"W x 66"D | OPFT3866

\$1,899



Counter 38" x 66" Oval Framed Table

Seats 4-6

131 lbs | 37"H x 38"W x 66"D | CNOPFT3866

\$1,999



Bar 38" x 66" Oval Framed Table

Seats 4-6

135 lbs | 42"H x 38"W x 66"D | BOPFT3866

\$2,049



Dining 36" x 58" Rectangular Framed Table

Seats 4

113 lbs | 30"H x 36"W x 58"D | DT3658

\$1,799



Counter 36" x 58" Rectangular Framed Table

Seats 6

115 lbs | 37"H x 36"W x 58"D | CNT3658

\$1,799



Bar 36" x 58" Rectangular Framed Table

Seats 6

123 lbs | 42"H x 36"W x 58"D | BT3658

\$1,849



Dining 94" Farmhouse Table

Seats 6-8

229 lbs | 30"H x 40"W x 94"D | FHT4094

\$2,649



Counter 94" Farmhouse Table

Seats 6-8

247 lbs | 37"H x 40"W x 94"D | CNFHT4094

\$2,799



Bar 94" Farmhouse Table

Seats 6-8

257 lbs | 42"H x 40"W x 94"D | BFHT4094

\$2,999

*Premium woodgrain colors priced above base — contact us for details



Dining 78" Farmhouse Table

Seats 6

170 lbs | 30"H x 40"W x 78"D | FHT4078

\$2,449



Counter 78" Farmhouse Table

Seats 6

179 lbs | 37"H x 40"W x 78"D | CNFHT4078

\$2,599



Bar 78" Farmhouse Table

Seats 6

184 lbs | 42"H x 40"W x 78"D | BFHT4078

\$2,799

TABLES



Dining 44" Square Table

Seats 4

87 lbs | 30"H x 44"W x 44"D | SPT44

\$1,149



Counter 44" Square Table

Seats 4

103 lbs | 37"H x 44"W x 44"D | CNSPT44

\$1,199



Bar 44" Square Table

Seats 4

119 lbs | 42"H x 44"W x 44"D | BSPT44

\$1,219



Dining 40" Square Unframed Table

Seats 4

76 lbs | 30"H x 40"W x 40"D | SPT40

\$849



Counter 40" Square Unframed Table

Seats 4

85 lbs | 37"H x 40"W x 40"D | CNSPT40

\$899



Bar 40" Square Unframed Table

Seats 4

88 lbs | 42"H x 40"W x 40"D | BSPT40

\$949



Dining 38" Square Table

Seats 4

75 lbs | 30"H x 38"W x 38"D | SPT38

\$1,099



Counter 38" Square Table

Seats 4

84 lbs | 37"H x 38"W x 38"D | CNSPT38

\$1,149



Bar 38" Square Table

Seats 4

98 lbs | 42"H x 38"W x 38"D | BSPT38

\$1,199



Dining 36" Heritage Square Table

Seats 4

63 lbs | 30 "H x 36"W x 36"D | HFT36

\$799



Counter 36" Heritage Square Table With Shelf

Seats 4

71 lbs | 37"H x 36"W x 36"D | CNST36

\$899



Bar 36" Square Heritage Table With Shelf

Seats 6

77 lbs | 42"H x 36"W x 36"D | BST36

\$919



Dining 28" Heritage Square Table

Seats 2

46 lbs | 30"H x 28"W x 28"D | HFT28

\$689



Counter 28" Heritage Square Table

Seats 2

55 lbs | 37"H x 28"W x 28"D | CNHLT28

\$689



Bar 28" Heritage Square Table

Seats 2

62 lbs | 42"H x 28"W x 28"D | BHLT28

\$719

*Premium woodgrain colors priced above base — contact us for details



Dining 28" Cambridge Square Table

Seats 2
57 lbs | 30"H x 28"W x 28"D | CFT28
\$689



Counter 28" Cambridge Square Table

Seats 2
56 lbs | 37"H x 28"W x 28"D | CNCLT28
\$689



Bar 28" Cambridge Square Table

Seats 2
63 lbs | 42"H x 28"W x 28"D | BCLT28
\$719

TABLES



Dining Game Table

Seats 2
52 lbs | 30"H x 28"W x 28"D | GFT-CB
\$799



Counter Game Table

Seats 2
58 lbs | 37"H x 28"W x 28"D | CNGLT-CB
\$799



Bar Game Table

Seats 2
62 lbs | 42"H x 28"W x 28"D | BGLT-CB
\$829



Dining 58" Round Framed Cabinet Base Table

Seats 6
178 lbs | 30"H x 58"Dia | RFBT58
\$2,099



Counter 58" Round Framed Cabinet Base Table

Seats 6
194 lbs | 37"H x 58"Dia | CNRFBT58
\$2,199



Bar 58" Round Framed Cabinet Base Table

Seats 6
200 lbs | 42"H x 58"Dia | BRFBT58
\$2,249



Dining 51" Round Framed Table

Seats 4

93 lbs | 30"H x 51"Dia | RPFT51

\$1,299



Counter 51" Round Framed Table

Seats 4

96 lbs | 37"H x 51"Dia | CNRPFT51

\$1,349



Bar 51" Round Framed Table

Seats 4

99 lbs | 42"H x 51"Dia | BRPFT51

\$1,399



Dining 48" Round Table

Seats 4

80 lbs | 30"H x 48"Dia | RPT48

\$1,099



Counter 48" Round Table

Seats 4

83 lbs | 37"H x 48"Dia | CNRPPT48

\$1,149



Bar 48" Round Table

Seats 4

87 lbs | 42"H x 48"Dia | BRPT48

\$1,169



Dining 44" Round Framed Table

Seats 4

74 lbs | 30"H x 44"Dia | RPFT44

\$1,199



Counter 44" Round Framed Table

Seats 4

77 lbs | 37"H x 44"Dia | CNRPFT44

\$1,249



Bar 44" Round Framed Table

Seats 4

80 lbs | 42"H x 44"Dia | BRPFT44

\$1,269

*Premium woodgrain colors priced above base — contact us for details



Dining 42" Round Table

Seats 4
73 lbs | 30 "H x 42"Dia | RPT42
\$899



Counter 42" Round Table

Seats 4
77 lbs | 37"H x 42"Dia | CNRPT42
\$949



Bar 42" Round Table

Seats 4
80 lbs | 42"H x 42"Dia | BRPT42
\$969



Dining 36" Round Cafe Table

Seats 4
63 lbs | 30"H x 36"Dia | RPT36
\$699



Counter 36" Round Leg Table

Seats 4
58 lbs | 37"H x 36"Dia | CNRLT36
\$699



Bar 36" Round Leg Table

Seats 4
59 lbs | 42"H x 36"Dia | BRLT36
\$719



Dining 31" Round Framed Cafe Table

Seats 2-4
41 lbs | 30"H x 31"Dia | RPFT31
\$649



Counter 31" Round Framed Leg Table

Seats 2-4
53 lbs | 37"H x 31"Dia | CNRLFT31
\$649



Bar 31" Round Framed Leg Table

Seats 2-4
55 lbs | 42"H x 31"Dia | BRLFT31
\$669



Counter 42" Round Legged Table

Seats 4

67 lbs | 37"H x 42"Dia | CNRLT42

\$899



Bar 42" Round Legged Table

Seats 4

69 lbs | 42"H x 42"Dia | BRLT42

\$919



Counter 28" x 58" Rectangular Framed Table

Seats 4-6

92 lbs | 37"H x 28"W x 58"D | CNT2858

\$1,649



Hexagon Picnic Table

Seats 6

252 lbs | 29"H x 75"W x 87"D | HXPT

\$2,499



Mini Picnic Table

77lbs | 25"H x 42"W x 42"D | MPT

\$699



Bar 28" x 58" Rectangular Framed Table

Seats 4-6

100 lbs | 42"H x 28"W x 58"D | BT2858

\$1,699



Counter 17" x 48" Balcony Table

Seats 2

50 lbs | 37"H x 48"W x 17"D | CNBT1748

\$659



Dining 17" x 57" Balcony Table

Seats 2

52 lbs | 30"H x 57"W x 17"D | DBT1757

\$699



Counter 17" x 57" Balcony Table

Seats 2

66 lbs | 37"H x 57"W x 17"D | CNBT1757

\$739

*Premium woodgrain colors priced above base — contact us for details



NEW!

Counter 36" x 73" Rectangular Tiered Framed Table

Seats 4-6

125lbs | 37"H x 36"W x 73"D | CNT3673

\$1,899



NEW!

Bar 36" x 73" Rectangular Tiered Framed Table

Seats 4-6

133 lbs | 42"H x 36"W x 73"D | BT3673

\$1,929

Our new 36" x 73" Rectangular Tiered Framed Table is the perfect fit for smaller spaces like decks and patios. The lower tier adds convenient built-in storage, ideal for keeping games, books, or tableware within reach when not in use.



Bar 36" Square Heritage Table With Shelf | Gray | BST36 | P. 28

Bar Swivel Stool | Gray | BHS-SW | P. 19

OUTDOOR ESCAPES



STEP 1

CHOOSE AN ADIRONDACK STYLE

Back style influences comfort and usability, upright profiles ease entry and exit for shared spaces, while relaxed angles create a more laid-back experience with stable support.



Traditional



Windsor



Sand Creek



Alpine



Backyard

STEP 2

CHOOSE YOUR FIT

Chair size shapes comfort and spacing, standard Adirondacks suit most shared environments, while King sizes add extra room where greater comfort is needed.



Traditional Settee
87 lbs | 41"H x 50"W x 32"D | ADST



Windsor King Adirondack
50 lbs | 41"H x 33"W x 39"D | WACK

Traditional King Ottoman
14 lbs | 15"H x 20"W x 19"D | OTK

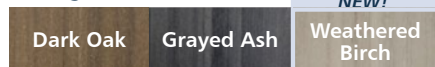


Sand Creek Raised & Upright Adirondack
43 lbs | 45"H x 31"W x 32"D | SBC-RS

STEP 3

CHOOSE A COLOR

Woodgrain Colors



*Premium woodgrain colors priced above base — contact us for details.

Solid Colors



ADIRONDACKS



Traditional Adirondack

42 lbs | 41"H x 30"W x 33"D | ADLX

\$419



Traditional Raised & Upright Adirondack

38 lbs | 45"H x 31"W x 33"D | ADLX-RS

\$419



Traditional King Adirondack

50 lbs | 41"H x 32"W x 38"D | ADLXK

\$449



Traditional King Raised & Upright Adirondack

50 lbs | 45"H x 33"W x 34"D | ADLXK-RS

\$449

Options for Different Needs

Raised & Upright Adirondacks provide a higher seat for smooth transitions from sitting to standing, while Traditional Adirondacks offer a more relaxed seating experience. Using both styles helps accommodate different users without sacrificing a cohesive look.

See which one is the perfect fit for you at bytheyard.net or call **952-219-7070!**



Windsor Adirondack

43 lbs | 38"H x 30"W x 34"D | WAC

\$419



Windsor Raised & Upright Adirondack

39 lbs | 46"H x 31"W x 32"D | WCC-RS

\$419



Windsor King Adirondack

50 lbs | 39"H x 32"W x 39"D | WACK

\$449



Windsor King Raised & Upright Adirondack

50 lbs | 46"H x 33"W x 33"D | WCCK-RS

\$449

*Premium woodgrain colors priced above base — contact us for details



Sand Creek Adirondack

43 lbs | 38"H x 30"W x 34"D | SCC

\$419



Sand Creek Raised & Upright Adirondack

43 lbs | 45"H x 31"W x 32"D | SBC-RS

\$419



Sand Creek King Adirondack

50 lbs | 38"H x 32"W x 38"D | SCCK

\$449



Sand Creek King Raised & Upright Adirondack

54 lbs | 45"H x 33"W x 33"D | SBCK-RS

\$449



Traditional Adirondack | Weathered Wood
ADLX | P. 36

Prairie End Table | Weathered Wood | PET
P. 91



Backyard Adirondack

53 lbs | 43"H x 33"W x 38"D | BYC

\$449



Alpine Adirondack

41 lbs | 40"H x 31"W x 32"D | APC

\$399



Alpine Raised & Upright Adirondack

46 lbs | 45"H x 31"W x 32"D | APC-RS

\$399



Head Rest Cushion

CSHN-HR

\$79

Add a headrest for extra comfort!

See color options on P. 69

SETTEE'S



Traditional Settee

87 lbs | 41"H x 50"W x 32"D | ADST

\$899



Backyard Settee

82 lbs | 44"H x 57"W x 39"D | BYST

\$949



We have purchased products from a well-known competitor, and they are nowhere near the standard of By the Yard.

MINI ADIRONDACKS



Mini Adirondack

20 lbs | 29"H x 21"W x 24"D | MADLX

\$209



Mini Windsor Adirondack

20 lbs | 29"H x 21"W x 24"D | MWAC

\$209



Mini Sand Creek Adirondack

20 lbs | 29"H x 21"W x 24"D | MSCC

\$209



Mini Accent Table

7 lbs | 12"H x 12"W x 12"D | MACT

\$109

Sand Creek Mini Adirondack 21"



Mini Collection

Scaled for children, our Mini Collection offers durable seating for family-friendly commercial spaces, helping create inclusive outdoor areas without compromising design or performance.

Check out our Mini Picnic Table on page 32!

ADIRONDACK ACCESSORIES



Traditional Ottoman

14 lbs | 15"H x 20"W x 19"D | OT

\$139



Backyard Ottoman

17 lbs | 15"H x 23"W x 17"D | OTBY

\$149



Raised & Upright Ottoman

14 lbs | 16"H x 20"W x 14"D | OTRS

\$139



Traditional King Ottoman

15 lbs | 15"H x 23"W x 21"D | OTK

\$149



King Raised & Upright Ottoman

14 lbs | 16"H x 23"W x 15"D | OTRSK

\$149



Cup Holder

1 lbs | 4"H x 4"W x 4"D | CUP

**Fits most beverage containers including your stemmed glasses!*

\$49

ADIRONDACKS



MOMENTS MADE FOR TWO





Horizon Tete-a-Tete

- \$1,099 Dining | 104 lbs | 39"H x 78"W x 35"D | HZC-20-TT
- \$1,099 Dining, Wide | 109 lbs | 39"H x 82"W x 35"D | HZC-TT
- \$1,129 Counter | 111 lbs | 47"H x 76"W x 36"D | CNHZC-TT
- \$1,149 Bar | 114 lbs | 52"H x 76"W x 36"D | BHZC-TT



Capri Tete-a-Tete

- \$1,099 Dining | 101 lbs | 37"H x 78"W x 35"D | CRC-20-TT
- \$1,099 Dining, Wide | 105 lbs | 37"H x 82"W x 35"D | CRC-TT
- \$1,129 Counter | 107 lbs | 45"H x 76"W x 36"D | CNCRC-TT
- \$1,149 Bar | 110 lbs | 50"H x 76"W x 36"D | BCRC-TT



Ad-Back Tete-a-Tete

- \$1,099 Dining | 101 lbs | 38"H x 78"W x 35"D | AXC-20-TT
- \$1,099 Dining, Wide | 105 lbs | 38"H x 82"W x 35"D | AXC-TT
- \$1,129 Counter | 107 lbs | 47"H x 76"W x 36"D | CNAXC-TT
- \$1,149 Bar | 111 lbs | 51"H x 76"W x 36"D | BAXC-TT



Emerson Tete-a-Tete

- \$1,099 Dining | 102 lbs | 37"H x 78"W x 35"D | EMC-20-TT
- \$1,099 Dining, Wide | 105 lbs | 37"H x 82"W x 35"D | EMC-TT
- \$1,129 Counter | 108 lbs | 45"H x 76"W x 36"D | CNEMC-TT
- \$1,149 Bar | 110 lbs | 50"H x 76"W x 36"D | BEMC-TT



Chippendale Tete-a-Tete

- \$1,099 Dining | 102 lbs | 37"H x 78"W x 35"D | CHC-20-TT
- \$1,099 Dining, Wide | 105 lbs | 37"H x 82"W x 35"D | CHC-TT
- \$1,129 Counter | 108 lbs | 45"H x 76"W x 36"D | CNCHC-TT
- \$1,149 Bar | 110 lbs | 50"H x 76"W x 36"D | BCHC-TT



Days End Tete-a-Tete

- \$1,099 Dining | 110 lbs | 46"H x 78"W x 35"D | JFKC-20-TT
- \$1,099 Dining, Wide | 114 lbs | 46"H x 82"W x 35"D | JFKC-TT

Garden Tete-a-Tete



\$1,099 Dining | 102 lbs | 34"H x 78"W x 35"D | GRC-20-TT

\$1,099 Dining, Wide | 106 lbs | 34"H x 82"W x 35"D | GRC-TT

\$1,129 Counter | 106 lbs | 43"H x 76"W x 36"D | CNGRC-TT

\$1,149 Bar | 111 lbs | 47"H x 76"W x 36"D | BGRC-TT



Day Break Tete-a-Tete



\$1,099 Dining | 101 lbs | 37"H x 78"W x 35"D | DBC-20-TT

\$1,099 Dining, Wide | 102 lbs | 37"H x 82"W x 35"D | DBC-TT

\$1,129 Counter | 103 lbs | 46"H x 76"W x 36"D | CNDBC-TT

\$1,149 Bar | 108 lbs | 50"H x 76"W x 36"D | BDBC-TT



Studio Tete-a-Tete



\$1,099 Dining | 103 lbs | 37"H x 78"W x 35"D | STC-20-TT

\$1,099 Dining, Wide | 104 lbs | 37"H x 82"W x 35"D | STC-TT

\$1,129 Counter | 108 lbs | 45"H x 76"W x 36"D | CNSTC-TT

\$1,149 Bar | 110 lbs | 50"H x 76"W x 36"D | BSTC-TT



Winstead Tete-a-Tete



\$1,099 Dining | 103 lbs | 38"H x 78"W x 35"D | WNC-20-TT

\$1,099 Dining, Wide | 104 lbs | 38"H x 82"W x 35"D | WNC-TT

\$1,129 Counter | 108 lbs | 46"H x 76"W x 35"D | CNWNC-TT

\$1,149 Bar | 110 lbs | 51"H x 76"W x 35"D | BWNC-TT



Windsor Tete-a-Tete

\$1,099 Dining | 111 lbs | 46"H x 78"W x 35"D | WDC-20-TT

\$1,099 Dining, Wide | 115 lbs | 46"H x 82"W x 35"D | WDC-TT

Mission Chair Tete-a-Tete



- \$1,099 Dining | 110 lbs | 45"H x 85"W x 35"D | MSDC-20-TT
- \$1,099 Dining, Wide | 114 lbs | 45"H x 87"W x 35"D | MSDC-TT
- \$1,199 Mission Arm Chair | 138 lbs | 45"H x 83"W x 36"D | MSC-20-TT
- \$1,209 Mission Arm Chair, Wide | 140 lbs | 45"H x 87"W x 36"D | MSC-TT
- \$1,229 Mission Arm Chair, King | 150 lbs | 45"H x 88"W x 37"D | MSCK-TT



Alpine Adirondack Tete-a-Tete

- \$999 Traditional | 112 lbs | 38"H x 75"W x 38"D | APC-TT
- \$999 Raised & Upright | 122 lbs | 45"H x 75"W x 35"D | APC-RS-TT



Traditional Adirondack Tete-a-Tete

- \$1,099 Traditional | 114 lbs | 41"H x 76"W x 33"D | ADLX-TT
- \$1,099 Raised & Upright | 106 lbs | 45"H x 77"W x 33"D | ADLX-RS-TT
- \$1,199 King | 130 lbs | 41"H x 78"W x 35"D | ADLXK-TT
- \$1,199 King, Raised & Upright | 130 lbs | 45"H x 79"W x 34"D | ADLXK-RS-TT



Windsor Adirondack Tete-a-Tete

- \$1,099 Traditional | 116 lbs | 39"H x 76"W x 34"D | WAC-TT
- \$1,099 Raised & Upright | 124 lbs | 46"H x 77"W x 32"D | WCC-RS-TT
- \$1,199 King | 130 lbs | 39"H x 78"W x 36"D | WACK-TT
- \$1,199 King, Raised & Upright | 130 lbs | 46"H x 79"W x 33"D | WCCK-RS-TT



Sand Creek Adirondack Tete-a-Tete

- \$1,099 Traditional | 116 lbs | 38"H x 76"W x 34"D | SCC-TT
- \$1,099 Raised & Upright | 116 lbs | 45"H x 77"W x 32"D | SBC-RS-TT
- \$1,199 King | 118 lbs | 38"H x 78"W x 35"D | SCCK-TT
- \$1,199 King, Raised & Upright | 138 lbs | 45"H x 79"W x 33"D | SBCK-RS-TT



Backyard Adirondack Tete-a-Tete

- \$1,199 136 lbs | 44"H x 82"W x 46"D | BYC-TT

TETE-A-TETES

SWITCH INTO GLIDE MODE



STEP 1

CHOOSE A BACK STYLE

Back style shapes comfort and the sensory experience, supportive backs encourage longer stays, while open profiles keep sightlines clear and the space visually light.



Windsor



Mission



Days End



Sand Creek



Adirondack



Horizon



Winstead



Emerson



Chippendale



Day Break



Capri



Studio

STEP 2

CHOOSE YOUR VIBE

Glider configurations support different needs, individuals offer calm personal seating, while benches and tete-a-tetes foster shared moments and help balance movement and flow.



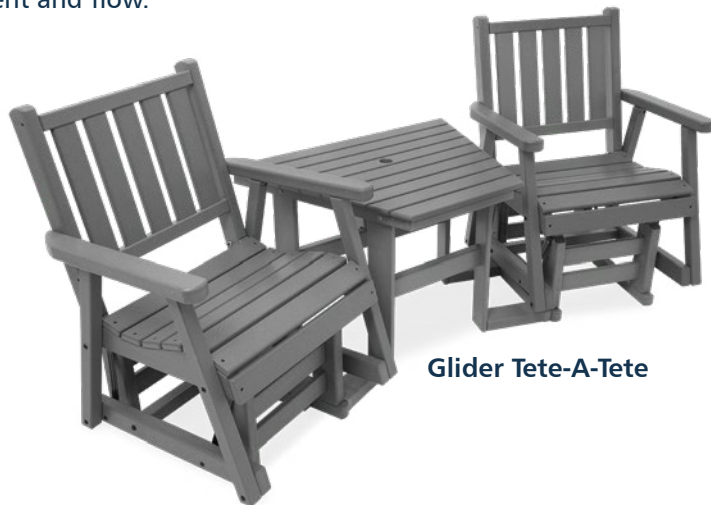
Glider



Garden



Swivel Glider



Glider Tete-A-Tete

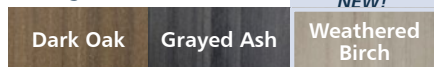


Glider Bench

STEP 3

CHOOSE A COLOR

Woodgrain Colors



*Premium woodgrain colors priced above base — contact us for details.

Solid Colors





Mission Swivel Glider

87 lbs | 45"H x 33"W x 29"D | MSGC-SW

\$849



Mission Glider

66 lbs | 45"H x 33"W x 29"D | MSGC

\$729



Mission King Glider

72 lbs | 45"H x 33"W x 32"D | MSGCK

\$749



Mission 48" Glider Bench

95 lbs | 45"H x 54"W x 29"D | MSGL48

\$1,099



Mission King 48" Glider Bench

102 lbs | 45"H x 54"W x 32"D | MSGLK48

\$1,149

Did you know?

All By the Yard furniture is made from recycled #2 plastics, such as milk and laundry detergent jugs.



Mission Glider Tete-A-Tete

168 lbs | 45"H x 94"W x 37"D | MSGC-TT

\$1,799



Mission King Glider Tete-A-Tete

170 lbs | 45"H x 94"W x 39"D | MSGCK-TT

\$1,839



Days End Swivel Glider

77 lbs | 47" H x 29" W x 30" D | JFKGC-SW

\$799



Days End Glider

56 lbs | 47" H x 29" W x 30" D | JFKGC

\$679



Days End King Glider

57 lbs | 47" H x 29" W x 33" D | JFKGCK

\$699



Days End 48" Glider Bench

87 lbs | 47" H x 50" W x 33" D | JFKGL48

\$1,049



Days End Glider Tete-A-Tete

144 lbs | 47" H x 89" W x 37" D | JFKGC-TT

\$1,699

Did you know?

Days End back style was inspired by the classic John F. Kennedy Rocker.



Days End Swivel Glider | Gray | JFKGC-SW



Days End King Glider Tete-A-Tete

150 lbs | 47" H x 89" W x 39" D | JFKGCK-TT

\$1,739

GLIDERS

SAND CREEK GLIDERS



Sand Creek Swivel Glider

84 lbs | 49"H x 33"W x 33"D | SCGC-SW

\$829



Sand Creek Glider

59 lbs | 49"H x 33"W x 33"D | SCGC

\$709



Sand Creek King Glider

60 lbs | 49"H x 33"W x 35"D | SCGCK

\$729



Sand Creek 48" Glider Bench

99 lbs | 49"H x 53"W x 33"D | SCGL48

\$1,029



Sand Creek Glider Tete-a-Tete

149 lbs | 39"H x 87"W x 33"D | SCGC-TT

\$1,759



Sand Creek King Glider Tete-a-Tete

150 lbs | 39"H x 87"W x 35"D | SCGCK-TT

\$1,799

Did you know?

You can leave By the Yard furniture outside year-round. No need to cover or store it.

ADIRONDACK GLIDERS



Adirondack Swivel Glider

81 lbs | 48"H x 33"W x 32"D | AGCLX-SW

\$829



Adirondack Glider

60 lbs | 48"H x 33"W x 32"D | AGCLX

\$709



Adirondack King Glider

63 lbs | 48"H x 33"W x 35"D | AGCLXK

\$729



Adirondack 48" Glider Bench

100 lbs | 48"H x 54"W x 32"D | AGLX48

\$1,029



Adirondack Glider Tete-a-Tete

158 lbs | 48"H x 89"W x 33"D | AGCLX-TT

\$1,759

Did you know?

Our furniture uses color matched stainless steel hardware for superior durability and longevity in all climates.



GLIDERS



Adirondack King Glider Tete-a-Tete

162 lbs | 48"H x 89"W x 36"D | AGCLXK-TT

\$1,799

WINDSOR GLIDERS



Windsor Swivel Glider

83 lbs | 49"H x 33"W x 31"D | WAGC-SW

\$829



Windsor Glider

59 lbs | 49"H x 33"W x 31"D | WAGC

\$709



Windsor King Glider

61 lbs | 49"H x 33"W x 34"D | WAGCK

\$729



Windsor 48" Glider Bench

101 lbs | 50"H x 54"W x 32"D | WAGL48

\$1,029



Windsor Glider Tete-A-Tete

152 lbs | 49"H x 89"W x 35"D | WAGC-TT

\$1,759

Did you know?

By the Yard furniture is backed by a 15-year warranty. Durability that stands apart.



Windsor King Glider Tete-A-Tete

160 lbs | 49"H x 89"W x 38"D | WAGCK-TT

\$1,799



Windsor Glider | Brown & Coffee | WAGC

*Premium woodgrain colors priced above base — contact us for details



Winstead Swivel Glider

70 lbs | 38"H x 28"W x 30"D | WNGC-SW

\$749



Winstead Glider

50 lbs | 38"H x 28"W x 30"D | WNGC

\$629



Winstead King Glider

53 lbs | 38"H x 28"W x 33"D | WNGCK

\$649



Winstead Glider Tete-a-Tete

138 lbs | 38"H x 86"W x 36"D | WNGC-TT

\$1,599



Winstead King Glider Tete-a-Tete

144 lbs | 38"H x 86"W x 39"D | WNGCK-TT

\$1,639

Did you know?

All furniture is designed and crafted in Jordan, MN, using high-quality, recycled materials, and our own time tested recipe.



The furniture is solid, I never have to worry about it blowing into our pool.

HORIZON GLIDERS



Horizon Swivel Glider

73 lbs | 40"H x 28"W x 30"D | HZGC-SW

\$749



Horizon Glider

52 lbs | 40"H x 28"W x 30"D | HZGC

\$629



Horizon King Glider

54 lbs | 40"H x 28"W x 33"D | HZGCK

\$649



Horizon 48" Glider Bench

87 lbs | 40"H x 48"W x 30"D | HZGL48

\$1,039



Horizon 60" Glider Bench

127 lbs | 40"H x 60"W x 30"D | HZGL60

\$1,289

Did you know?

All products are designed to withstand all weather conditions — heat, snow, rain, salty air, and humidity.



Horizon Glider Tete-a-Tete

142 lbs | 39"H x 87"W x 37"D | HZGC-TT

\$1,599



Horizon King Glider Tete-A-Tete

145 lbs | 39"H x 87"W x 37"D | HZGCK-TT

\$1,639



Capri Swivel Glider

71 lbs | 37"H x 28"W x 30"D | CRGC-SW

\$749



Capri Glider

50 lbs | 37"H x 28"W x 30"D | CRGC

\$629



Capri King Glider

52 lbs | 37"H x 28"W x 33"D | CRGCK

\$649



Capri 48" Glider Bench

82 lbs | 37"H x 48"W x 30"D | CRGL48

\$879



Capri 60" Glider Bench

112 lbs | 37"H x 60"W x 30"D | CRGL60

\$1,129

GLIDERS

Did you know?

By the Yard furniture is UV-stabilized to minimize fading, keeping colors vibrant for decades.

See P. 98 for information.



Capri Glider Tete-a-Tete

138 lbs | 37"H x 87"W x 36"D | CRGC-TT

\$1,599



Capri King Glider Tete-a-Tete

141 lbs | 37"H x 87"W x 38"D | CRGCK-TT

\$1,639



Studio Swivel Glider

71 lbs | 37"H x 28"W x 30"D | STGC-SW

\$749



Studio Glider

50 lbs | 37"H x 28"W x 30"D | STGC

\$629



Studio King Glider

53 lbs | 37"H x 28"W x 33"D | STGCK

\$649



48" Studio Glider Bench

74 lbs | 37"H x 48"W x 28"D | STGL48

\$879



60" Studio Glider Bench

97 lbs | 37"H x 60"W x 28"D | STGL60

\$1,129

Did you know?

You can select from our full color palette to customize the look of your furniture — right down to each board.



Studio Glider Tete-a-Tete

138 lbs | 37"H x 86"W x 35"D | STGC-TT

\$1,599



Studio King Glider Tete-a-Tete

144 lbs | 37"H x 86"W x 38"D | STGCK-TT

\$1,639

DAY BREAK GLIDERS



Day Break Swivel Glider

70 lbs | 38"H x 28"W x 30"D | DBGCSW
\$749



Day Break Glider

49 lbs | 38"H x 28"W x 30"D | DBGC
\$629



Day Break King Glider

51 lbs | 38"H x 28"W x 33"D | DBGCK
\$649



Day Break 48" Glider Bench

75 lbs | 38"H x 48"W x 30"D | DBGL48
\$879



Day Break Glider Tete-a-Tete

136 lbs | 38"H x 87"W x 36"D | DBGCTT
\$1,599



Day Break King Glider Tete-a-Tete

139 lbs | 38"H x 87"W x 38"D | DBGCKTT
\$1,639



Did you know?

By the Yard furniture won't splinter, crack, peel, or rot — no matter the season.

GLIDERS

CHIPPENDALE GLIDERS



Chippendale Swivel Glider

71 lbs | 36"H x 28"W x 30"D | CHGC-SW

\$749



Chippendale Glider

50 lbs | 36"H x 28"W x 30"D | CHGC

\$629



Chippendale King Glider

52 lbs | 36"H x 28"W x 33"D | CHGCK

\$649



Chippendale 48" Glider Bench

81 lbs | 36"H x 48"W x 30"D | CHGL48

\$879



Chippendale 60" Glider Bench

116 lbs | 36"H x 60"W x 30"D | CHGL60

\$1,129

Did you know?

We use a proprietary blend that's engineered to be the best on the market for strength, durability, and performance.



Chippendale Glider Tete-a-Tete

138 lbs | 37"H x 87"W x 36"D | CHGC-TT

\$1,599



Chippendale King Glider Tete-a-Tete

141 lbs | 37"H x 87"W x 38"D | CHGCK-TT

\$1,639



Emerson Swivel Glider

70 lbs | 37"H x 28"W x 30"D | EMGC-SW

\$749



Emerson Glider

49 lbs | 37"H x 28"W x 30"D | EMGC

\$629



Emerson King Glider

51 lbs | 37"H x 28"W x 33"D | EMGCK

\$649



Emerson 48" Glider Bench

80 lbs | 37"H x 48"W x 30"D | EMGL48

\$879



Emerson 60" Glider Bench

110 lbs | 37"H x 60"W x 30"D | EMGL60

\$1,129

GLIDERS

Did you know?

By the Yard furniture is maintenance-free. No painting, staining, or sealing — ever!



Emerson Glider Tete-a-Tete

136 lbs | 37"H x 87"W x 36"D | EMGC-TT

\$1,599



Emerson King Glider Tete-a-Tete

141 lbs | 37"H x 87"W x 38"D | EMGCK-TT

\$1,639



Garden Swivel Glider

69 lbs | 35"H x 28"W x 30"D | GRGC-SW

\$749



Garden Glider

48 lbs | 35"H x 28"W x 30"D | GRGC

\$629



Garden King Glider

50 lbs | 35"H x 28"W x 33"D | GRGCK

\$649



Garden 48" Glider Bench

83 lbs | 35"H x 48"W x 30"D | GRGL48

\$879



Garden 60" Glider Bench

115 lbs | 35"H x 60"W x 30"D | GRGL60

\$1,129

Did you know?

Each glider is crafted for comfort with contoured seats and ergonomic designs, and each piece is triple hand-checked for quality.



Garden Glider Tete-a-Tete

138 lbs | 35"H x 87"W x 36"D | GRGC-TT

\$1,599



Garden King Glider Tete-a-Tete

141 lbs | 35"H x 87"W x 38"D | GRGCK-TT

\$1,639

*Premium woodgrain colors priced above base — contact us for details

GLIDER ACCESSORIES



Glider Chair Ottoman

27 lbs | 14"H x 23"W x 20"D | GLOT

\$349



Glider Bench Ottoman

38 lbs | 14"H x 36"W x 20"D | DGLOT

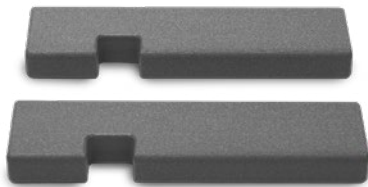
\$419



Glider Chair Tete-A-Tete Table

38 lbs | 23"H x 50"W x 26"D | GCTTT

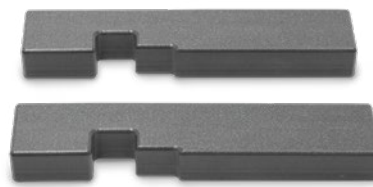
\$419



Glider Chair Locks

3 lbs | 2"H x 4"W x 14"D | GCLOCK

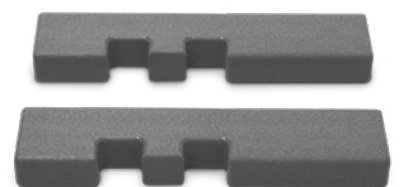
\$45



Glider 48" Bench Locks

3 lbs | 2"H x 4"W x 14"D | GLLOCK48

\$45



Glider 60" Bench Locks

3 lbs | 2"H x 4"W x 4"D | GLLOCK60

\$45

GLIDERS



LIGHT IT UP



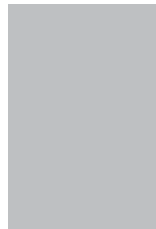
STEP 1

CHOOSE A FIRE TABLE SHAPE

A fire table naturally brings people closer together. A rounded table allows everyone to gather easily, while square tables provide a modern flair to your outdoor space.



Square



Rectangle



Circle



Oval

STEP 2

CHOOSE A FIRE TABLE HEIGHT

Is your fire table a place to gather under the stars, somewhere to set out drinks and snacks, or maybe where you'll have dinner? Match your table height around your plans and guests' needs.



Coffee



Dining



Counter

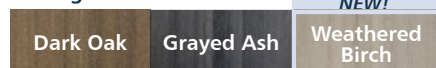


Bar

STEP 3

CHOOSE A COLOR

Woodgrain Colors



*Premium woodgrain colors priced above base — contact us for details.

Solid Colors



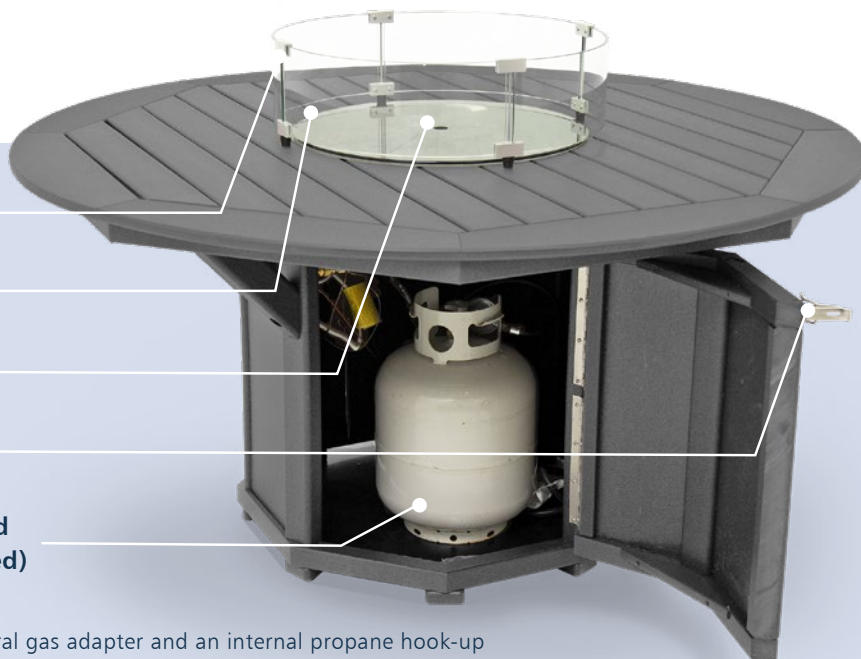
Tempered glass wind guard

Stainless steel fire bowl

55,000 - 80,000+ BTUs

Stainless steel hardware

Interior propane tank hook-up and storage (propane tank not included)



All Fire Tables come equipped with a natural gas adapter and an internal propane hook-up for you to select how best to add a warm glow to your outdoor space.

FIRE TABLES



**Dining 58" Round Framed
Fire Table**

Seats 6
177 lbs | 30"H x 58"Dia | FT58
\$3,499



**Counter 58" Round Framed
Fire Table**

Seats 6
194 lbs | 37"H x 58"Dia | CNFT58
\$3,599



**Bar 58" Round Framed
Fire Table**

Seats 6
210 lbs | 42"H x 58"Dia | BFT58
\$3,699



**Dining 51" Round Framed
Fire Table**

Seats 4
150 lbs | 30"H x 51"Dia | FT51
\$2,899



**Counter 51" Round Framed
Fire Table**

Seats 4
166 lbs | 37"H x 51"Dia | CNFT51
\$2,999



**Bar 51" Round Framed
Fire Table**

Seats 4
182 lbs | 42"H x 51"Dia | BFT51
\$3,099



**Coffee 38" Round Framed
Fire Table**

108 lbs | 23"H x 38"Dia | FTC38
\$1,899



**Coffee 51" Round Framed
Fire Table**

150 lbs | 23"H x 51"Dia | FTC51
\$2,499



**Coffee 58" Round Framed
Fire Table**

163 lbs | 23"H x 58"Dia | FTC58
\$3,099

*Premium woodgrain colors priced above base — contact us for details



Dining 44" x 66" Oval Framed Fire Table

Seats 6

179 lbs | 30"H x 44"W x 66"D | FT4466

\$3,499



Counter 44" x 66" Oval Framed Fire Table

Seats 6

189 lbs | 37"H x 44"W x 66"D | CNFT4466

\$3,599



Bar 44" x 66" Oval Framed Fire Table

Seats 6

199 lbs | 42"H x 44"W x 66"D | BFT4466

\$3,699



Dining 94" Farmhouse Fire Table

286 lbs | 30"H x 94" W x 40"D | FT4094

Seats 8

\$4,099



Counter 94" Farmhouse Fire Table

304 lbs | 37"H x 94" W x 40"D | CNFT4094

Seats 8

\$4,399



Bar 94" Farmhouse Fire Table

314 lbs | 42"H x 94" W x 40"D | BFT4094

Seats 8

\$4,599

FIRE TABLES



Coffee 36" x 58" Rectangular Framed Fire Table

159 lbs | 23"H x 36"W x 58"D | FTC3658

\$2,749



Coffee 28" x 58" Rectangular Fire Table

153 lbs | 23"H x 28"W x 58"D | FTC2858

\$2,899



Coffee 40" x 40" Square Fire Table

171 lbs | 23"H x 40"W x 40"D | FTC4040

\$2,599

CUSHION YOUR COMFORT



Berkshire Cushion Couch | Sandtone | Linen Stone | DSCH0142 | P. 66
Berkshire Cushion Chair | Sandtone | Linen Stone | DSCHR0142 | P. 66

28x58 Coffee Fire Table | Sandtone | FTC2858 | P. 63
Square Tiered End Table | Sandtone | SET2323 | P. 90



JORDAN MISSION CUSHION FURNITURE



Jordan Cushioned Mission Stationary Chair

80 lbs | 35"H x 36"W x 35"D | DSCHR0124

\$1,179



Jordan Cushioned Mission Swivel Chair

101 lbs | 35"H x 36"W x 35"D | DSCHR-SW0124

\$1,399



Jordan Cushioned Mission Swivel-Flex Chair

111 lbs | 35"H x 36"W x 35"D | DSCHR-SWRK0124

\$1,599



Jordan Cushioned Mission Bench

124 lbs | 35"H x 60"W x 35"D | DSBN0124

\$2,199



Jordan Cushioned Mission Couch

165 lbs | 35"H x 86"W x 35"D | DSCH0124

\$2,999



Jordan Cushioned Ottoman

24 lbs | 12"H x 25"W x 21"D | DSOT0120

\$499

BERKSHIRE CUSHION FURNITURE



Berkshire Chair

66 lbs | 30"H x 34"W x 32"D | DSCHR0140

\$1,099

NEW!



Berkshire Bench

108 lbs | 30"H x 59"W x 32"D | DSBN0140

\$2,099

NEW!



Berkshire Couch

126 lbs | 30"H x 84"W x 32"D | DSCH0140

\$2,999

NEW!

JORDAN CLASSIC CUSHION FURNITURE



Jordan Cushioned Classic Stationary Chair

60 lbs | 35"H x 31"W x 35"D | DSCHR0122

\$1,079



Jordan Cushioned Classic Swivel Chair

75 lbs | 35"H x 31"W x 35"D | DSCHR-SW0122

\$1,299



Jordan Cushioned Classic Swivel-Flex Chair

85lbs | 35"H x 31"W x 35"D | DSCHR-SWRK0122

\$1,499



Jordan Cushioned Classic Bench

104 lbs | 35"H x 55"W x 35"D | DSBN0122

\$2,099



Jordan Cushioned Classic Couch

148 lbs | 35"H x 81"W x 35"D | DSCH0122

\$2,849

CUSHION

Jordan Cushioned Mission Swivel-Flex Chair | Dark Oak | Cast Silver | DSCHR-SWRK0124 | P. 66

Jordan Cushioned Mission Couch | Dark Oak | Cast Silver | DSCH0124 | P. 66



28 x 58 Coffee Fire Table | Dark Oak | FTC2858 | P. 63

Traditional Side Table | Dark Oak | TST | P. 89

18x18 Latitude Planter | Dark Oak | PX1818-34 | P. 81

JORDAN CUSHION SECTIONAL



Jordan Cushioned Sectional Corner

68 lbs | 35"H x 36"W x 36"D | DSCNR0120

\$1,299



Jordan Cushioned Sectional Section

50 lbs | 35"H x 25"W x 34"D | DSSCT0120

\$1,099



Jordan Cushioned Classic Sectional Arm Set

13 lbs | 26"H x 3"W x 33"D | DSARM0122

Includes 2 arms.

\$229



Jordan Cushioned Mission Sectional Arm set

38 lbs | 26"H x 6"W x 33"D | DSARM0124

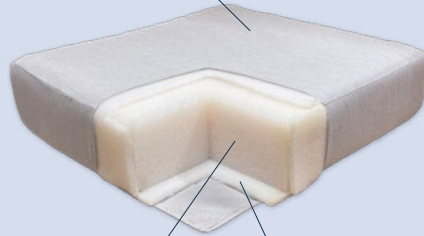
Includes 2 arms.

\$339

NEW!

Reticulated Foam Cushions

UV-Stabilized Sunbrella Fabric
Available in 8 colors



Supportive Premium Quick Dry Foam

Soft Quick Dry Foam for Added Comfort



Jordan Cushioned Sectional Ottoman

30 lbs | 12"H x 25"W x 21"D | DSSOT0120

\$499



NEW!

Rectangular Sectional Table

48 lbs | 25"H x 15"W x 29"D | DSRST0120

\$519



NEW!

Square Sectional Table

73 lbs | 25"H x 29"W x 29"D | DSSST0120

\$619



NEW!

Wedge Sectional Table

55 lbs | 25"H x 36"W x 29"D | DSWST0120

\$519

Customize Your Sectional

1. Decide on your layout preferences.
2. Determine how many seats you want.
3. Choose your arm style (Mission and Classic).
4. Choose your frame style and cushion colors.

Premium Foam Cushions

Our Cushions feature Sunbrella® fabric, solution-dyed with UV protection for lasting color. Inside, reticulated foam's open-cell design lets water drain and air circulate, so cushions dry quickly and resist moisture.

Key Benefits

Fast Drying

The open-cell structure allows water to pass through easily, reducing dry time after rain or cleaning.

Easy to Clean

Easy to spot clean and it dries in just 1 hour making it perfect for real life everyday use.

Mold and Mildew Resistant

Improved airflow helps prevent mold and mildew growth.

Low Maintenance

Ideal for environments exposed to rain, humidity, and spills.

Durable and Long-Lasting

Reinforced structure resists breakdown over time. Cushions keep their shape, performance, and comfort longer. Backed with a **5-year warranty**.

Built for the Elements

Originally designed for outdoor, marine, and exterior applications, this foam holds up to the cold, heat, humidity, and changing weather.



CUSHION

Cushions available in 8 Sunbrella® colors.

ROCK, SWAY, UNWIND



Chaise Lounge With Wheels | Dark Oak | CLW | P. 89
9' Octagon Umbrella | Black Stripe | Golden Oak | UMFF9OCT | P. 95

72" Storage Box | Dark Oak | STG72-38 | P. 85
Traditional Side Table | Dark Oak | TST | P. 89

LOUNGES



Chaise Lounge

74 lbs | 38"H x 30"W x 78"D | CL
\$619



Chaise Lounge With Wheels

78 lbs | 41"H x 30"W x 78"D | CLW
\$719



Double Chaise Lounge With Wheels

133 lbs | 41"H x 55"W x 78"D | CLWD
\$1,349



Latitude Chaise Lounge

100 lbs | 15"H x 27"W x 80"D | CL-2780
Cushion Included.

\$1,149



**Latitude Chaise Lounge
With Wheels**

108 lbs | 15"H x 27"W x 80"D | CLW-2780.
Cushion Included.

\$1,239



Chaise Lounge Cushion

CSHN-CL1005
Frame not included.

\$249

SWINGS



48" Garden Swing

56 lbs | 21"H x 48"W x 27"D | SWGR48
\$799



60" Garden Swing

89 lbs | 21"H x 60"W x 27"D | SWGR60
\$999

Garden swings bring classic charm to your front porch, creating a cozy and inviting atmosphere. Each one comes with four 9' stainless steel chains for easy hanging.

ADIRONDACK ROCKERS



Windsor Rocker

45 lbs | 41"H x 30"W x 35"D | RWCC

\$569



Adirondack Rocker

44 lbs | 41"H x 30"W x 33"D | RADLX

\$569



Sand Creek Rocker

45 lbs | 40"H x 30"W x 35"D | RSBC

\$569



Windsor King Rocker

53 lbs | 44"H x 33"W x 35"D | RWACK

\$599



Adirondack King Rocker

53 lbs | 44"H x 33"W x 35"D | RADLXK

\$599



Sand Creek King Rocker

51 lbs | 43"H x 33"W x 35"D | RSBCK

\$599

TRADITIONAL ROCKERS



Days End Rocker

44 lbs | 43"H x 29"W x 35"D | RJFKCS

\$499



Days End With Flat Seat Rocker

42 lbs | 43"H x 29"W x 35"D | RJFKFS

\$499



Mission Rocker

53 lbs | 42"H x 31"W x 33"D | RMSC

\$599

*Premium woodgrain colors priced above base — contact us for details



LOUNGES, SWINGS, ROCKERS



PAUSE & RECHARGE

STEP 1

CHOOSE A BENCH STYLE

Our benches come in a variety of styles and sizes. Choose your back style and select your length; comfortably accommodating anywhere from 1-4 people on an ergonomic, curved seat. Any of our 60" benches are available with a drop-in table option.



Standard Height



Counter Height

*Only available in 48" width.

BENCHES

STEP 2

CHOOSE A BENCH WIDTH

How big is your guest list (and space)? We've got benches built for two, three, or four, so everyone can sit by the outdoor pool, table, or garden.

48" Bench



Seats 2

60" Bench



Seats 2-3

72" Bench

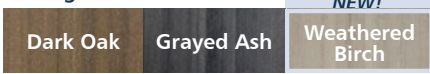


Seats 3-4

STEP 3

CHOOSE A COLOR

Woodgrain Colors



*Premium woodgrain colors priced above base — contact us for details.

Solid Colors



Customize your bench, add a personal touch to your piece with engraving—perfect for memorials, donors, or showcasing your brand. See page 79 for details!

Horizon Bench



\$879	48" 75 lbs 40"H x 48"W x 28"D HZB48
\$949	48" Counter Height 84 lbs 43"H x 48"W x 32"D CNHZB48
\$1,079	60" 107 lbs 40"H x 60"W x 28"D HZB60
\$1,149	60" Drop-in Table 118 lbs 40"H x 60"W x 28"D HZB60-DT
\$1,149	72" 114 lbs 40"H x 72"W x 28"D HZB72



Capri Bench



\$839	48" 70 lbs 36"H x 48"W x 27"D CRB48
\$929	48" Counter Height 83 lbs 42"H x 48"W x 32"D CNCRB48
\$1,049	60" 89 lbs 36"H x 60"W x 27"D CRB60
\$1,129	60" Drop-in Table 108 lbs 36"H x 60"W x 27"D CRB60-DT
\$1,129	72" 99 lbs 36"H x 72"W x 27"D CRB72



Garden Bench



\$619	48" 71 lbs 36"H x 48"W x 26"D GRB48
\$819	48" Counter Height 81 lbs 39"H x 48"W x 32"D CNGRB48
\$819	60" 95 lbs 36"H x 60"W x 26"D GRB60
\$919	60" Drop-in Table 111 lbs 36"H x 60"W x 26"D GRB60-DT
\$919	72" 106 lbs 36"H x 72"W x 26"D GRB72



Chippendale Bench



\$839	48" 69 lbs 36"H x 48"W x 27"D CHB48
\$929	48" Counter Height 82 lbs 41"H x 48"W x 32"D CNCHB48
\$1,049	60" 89 lbs 36"H x 60"W x 27"D CHB60
\$1,129	60" Drop-in Table 108 lbs 36"H x 60"W x 27"D CHB60-DT
\$1,129	72" 99 lbs 36"H x 72"W x 27"D CHB72



*Premium woodgrain colors priced above base — contact us for details

Emerson Bench



- \$839 48" | 68 lbs | 36"H x 48"W x 27"D | EMB48
- \$929 48" Counter Height | 82 lbs | 41"H x 48"W x 32"D | CNEMB48
- \$1,049 60" | 90 lbs | 36"H x 60"W x 27"D | EMB60
- \$1,129 60" Drop-in Table | 106 lbs | 36"H x 60"W x 27"D | EMB60-DT
- \$1,129 72" | 96 lbs | 36"H x 72"W x 27"D | EMB72



Day Break Bench

- \$839 48" | 65 lbs | 37"H x 48"W x 26"D | DBB48
- \$929 48" Counter Height | 81 lbs | 41"H x 48"W x 32"D | CNDBB48
- \$1,129 72" | 100 lbs | 37"H x 72"W x 26"D | DBB72



Days End Bench

- \$899 48" | 72 lbs | 47"H x 48"W x 28"D | JFKB48
- \$1,129 72" | 115 lbs | 47"H x 72"W x 28"D | JFKB72



Mission Bench

- \$949 48" | 80 lbs | 45"H x 54"W x 28"D | MSB48
- \$979 King 48" | 85 lbs | 45"H x 54"W x 31"D | MSBK48





NEW!

Studio Bench

- \$839 48" | 65 lbs | 37"H x 48"W x 27"D | STB48
- \$1,049 60" | 80 lbs | 37"H x 60"W x 27"D | STB60
- \$1,129 72" | 87 lbs | 37"H x 72"W x 27"D | STB72



NEW!

Backless Bench with Flat Seat

- \$499 36" | 35 lbs | 18"H x 36"W x 20"D | BB36F
- \$569 48" | 43 lbs | 18"H x 48"W x 20"D | BB48F
- \$689 48" Counter Height | 54 lbs | 24"H x 48"W x 23"D | CNBB48F
- \$689 60" | 48 lbs | 18"H x 60"W x 20"D | BB60F
- \$799 60" Counter Height | 69 lbs | 24"H x 60"W x 23"D | CNBB60F
- \$799 72" | 71 lbs | 18"H x 72"W x 20"D | BB72F



Backless Bench with Curved Seat

- \$499 36" | 35 lbs | 18"H x 36"W x 20"D | BB36C
- \$569 48" | 43 lbs | 18"H x 48"W x 20"D | BB48C
- \$689 60" | 47 lbs | 18"H x 60"W x 20"D | BB60C
- \$799 72" | 68 lbs | 18"H x 72"W x 20"D | BB72C



Picnic Table Bench

- \$339 34" | 20 lbs | 17"H x 34"W x 12"D | PTB34
- \$479 59" | 38 lbs | 17"H x 59"W x 12"D | PTB59



Farmhouse Bench

- \$679 60" | 57 lbs | 17"H x 60"W x 17"D | FHB60
- \$799 72" | 67 lbs | 17"H x 72"W x 17"D | FHB72



*Premium woodgrain colors priced above base — contact us for details

ENGRAVING

STEP 1

SELECT YOUR FURNITURE: STYLE, COLOR(S), & SIZE

Specify which board(s) will be engraved.

STEP 2

CHOOSE YOUR MESSAGE

Compose your message, choose a font and letter style, or provide a logo in a digital format.

Times New Roman | Arial | Comic Sans

Average number of characters for 72" bench is 52, 60" bench is 43, and 48" bench is 33 (include spaces in your count).

STEP 3

SUBMIT YOUR FORM

Call 952-219-7070 for more information about engraving. The final engraving form will be sent for your approval. Engraving includes a \$50 setup per item, plus \$5 per character. Image designs may include an additional fee.

We recommend Garden & Horizon back styles for engraving! See P. 76.



Garden Bench



Horizon Bench

PLANT, GROW, BLOOM

GARDEN



Portable Potting Bench

125 lbs | 65"H x 55"W x 23"D | PPB

\$1,699



Portable Potting Table with Shelf

96 lbs | 56"H x 55"W x 29"D | PPT-S

\$1,699



Legs must be buried 18" for stability.

Garden Arbor

120 lbs | 108"H x 76"W x 26"D | ARB

\$1,299



NEW!

18" x 43" Rectangular Latitude Planter

108 lbs | 34"H x 43"W x 18"D | PX1843-34

\$599



NEW!

18" x 18" Square Latitude Planter

43 lbs | 34"H x 18"W x 18"D | PX1818-34

\$439



NEW!

Privacy Planter

185 lbs | 68"H x 60"W x 24"D | PPX2460

\$1,999



NEW!

Latitude Privacy Planter

187 lbs | 67"H x 61"W x 21"D | PPX2161

\$1,849



NEW!

21" x 39" Latitude Privacy Planter

128 lbs | 67" H x 39"W x 21"D | PPX2139

\$1,349



72" Raised Garden

125 lbs | 36"H x 72"W x 23"D | RG72
\$1,499



60" Raised Garden

113 lbs | 36"H x 60"W x 23"D | RG60
\$1,399



45" Raised Garden

95 lbs | 36"H x 45"W x 23"D | RG45
\$1,199



Elevated Planter Box

66 lbs | 36"H x 39"W x 27"D | EPB
\$749



Elevated Planter Stand

49 lbs | 34"H x 30"W x 12"D | PLS
\$579



Backless Planter Bench

83 lbs | 18"H x 75"W x 24"D | BPLB
\$999



Left:
24" Tapered Planter Box | Sandtone-Black | TP24 | P. 83
18" Tapered Planter Box | Sandtone-Black | TP18 | P. 83

Planters That Elevate Outdoor Spaces

Our planters offer a simple, durable way to enhance first impressions in commercial environments. Designed to coordinate with our furniture and hold up to outdoor conditions, they help define entrances, soften hardscapes, and create a more welcoming outdoor experience with minimal maintenance.

*Premium wood grain colors priced above base — contact us for details



30" Tapered Planter Box

45 lbs | 30"H x 20"W x 20"D | TP30

\$459



24" Tapered Planter Box

42 lbs | 24"H x 20"W x 20"D | TP24

\$419



18" Tapered Planter Box

30 lbs | 18"H x 20"W x 20"D | TP18

\$349



14" x 24" Planter Box

21 lbs | 14"H x 24"W x 14"D | PX1424

\$179



18" x 18" Square Planter Box

22 lbs | 18"H x 18"W x 18"D | PX1818

\$209



14" x 14" Square Planter Box

12 lbs | 14"H x 14"W x 14"D | PX1414

\$149



21" x 21" Square Planter Box With Legs

42 lbs | 21"H x 21"W x 21"D | PX2121

\$319

GARDEN



Portable Potting Table with Shelf | Sandtone | PPT-S | P. 81

HOST, SERVE, & STORE



72" Storage Box At 38" High | Sandtone | STG72-38 | P. 85

STORAGE & SERVICE



72" x 38" Storage Box

199 lbs | 37"H x 74"W x 25"D | STG72-38
Fits 4 sets of cushions.

\$2,399



56" x 38" Storage Box

152 lbs | 37"H x 58"W x 25"D | STG56-38
Fits 3 sets of cushions.

\$2,299



56" x 18" Storage Box

119 lbs | 18"H x 58"W x 25"D | STG56-18
Great for outdoor toys.

\$2,099



NEW!

72" x 38" Latitude Storage Box

199 lbs | 37"H x 74"W x 25"D | STG72-38-LAT
Fits 4 sets of cushions.

\$2,499



NEW!

56" x 38" Latitude Storage Box

152 lbs | 37"H x 58"W x 25"D | STG56-38-LAT
Fits 3 sets of cushions.

\$2,399



NEW!

56" x 18" Latitude Storage Box

119 lbs | 18"H x 58"W x 25"D | STG56-18-LAT
Great for outdoor toys.

\$2,199

STORAGE & SERVICE



NEW!

36" x 38" Storage Box

141 lbs | 36"H x 38"W x 25"D | STG36-38-LAT
Fits 2 sets of cushions.

\$2,199



Includes two 23 gal trash cans.

NEW!

Dual Latitude Square Trash Receptacle

128 lbs | 45"H x 29"W x 24"D | ATREC-2924-LAT

\$1,229



Includes 23 gal trash can.

NEW!

Latitude Square Trash Receptacle

94 lbs | 45"H x 15"W x 24"D | ATREC-1524-LAT

\$799



Includes 32 gal trash can.



Longitude Square Trash Receptacle

94 lbs | 40"H x 23"W x 23"D | STREC

\$899



Includes 23 gal trash can.

Narrow Trash Receptacle Small Door Access

69 lbs | 44"H x 15"W x 26"D | NTREC-SD

\$699



Includes 32 gal trash can.

Trash Receptacle

84 lbs | 43"H x 25"W x 25"D | TREC

\$899



Trash Receptacle | Sandtone | TREC



Utility Box

45 lbs | 31"H x 23"W x 14"D | UTB

\$419



Includes 25 gal trash can.

Towel Locker

151 lbs | 43"H x 41"W x 25"D | TL

\$1,159



Portable Bar

163 lbs | 43"H x 53"W x 26"D | PBAR-D

\$2,099



Cutting board can be mounted on right or left side.

Portable Kitchen Cart With White Cutting Board

148 lbs | 37"H x 46"W x 28"D | PKC

\$1,699



Includes 35 gal trash can.

Bussing Station

200 lbs | 43"H x 53"W x 24"D | BUSS

\$1,879



Patio Cart

51 lbs | 36"H x 35"W x 19"D | PC

\$619



32" Serving Table

43 lbs | 34"H x 32"W x 17"D | SVT

\$499



48" Serving Table

92 lbs | 34"H x 48"W x 23"D | SVT48

\$849



STORAGE & SERVICE

ACCENT WITH STYLE



ACCENT TABLES & ACCESSORIES



38" Round Framed Coffee Table

57 lbs | 18"H x 38"Dia | RFCT38

\$559



Mission Coffee Table

42 lbs | 18"H x 40"W x 20"D | MSCT

\$499



Rectangular Coffee Table

20 lbs | 14"H x 32"W x 17"D | CT32

\$389



20" Round End Table

15 lbs | 20"H x 20"Dia | RET

\$239



Mission End Table

30 lbs | 24"H x 20"W x 20"D | MSET

\$349



Traditional Side Table

22 lbs | 18"H x 20"W x 17"D | TST

\$239



Accent Table

19 lbs | 23"H x 18"W x 14"D | ACT

\$209



Counter Accent Table

25 lbs | 30"H x 17"W x 20"D | CNACT

\$289



Bar Accent Table

26 lbs | 35"H x 17"W x 20"D | BACT

\$309



Heritage Coffee Table

41 lbs | 18"H x 29"W x 29"D | HCT

\$489



Cambridge Coffee Table

42 lbs | 18"H x 28"W x 28"D | CCT

\$489



28" x 50" Rectangular Tiered Coffee Table

86 lbs | 18"H x 50"W x 28"D | CT2850

\$799



Heritage Side Table

20 lbs | 20"H x 22"W x 20"D | HST

\$279



Cambridge Side Table

20 lbs | 20"H x 20"W x 20"D | CST

\$289



23" x 23" Square Tiered End Table

34 lbs | 22"H x 23"W x 23"D | SET2323

\$309



Folding Heritage Side Table

21 lbs | 20"H x 22"W x 20"D | FHST

\$279



Game Coffee Table

48 lbs | 18"H x 28"W x 28"D | GCT-CB

\$679



Round End Table | Gray | RET | P. 89

*Premium woodgrain colors priced above base — contact us for details



Prairie Coffee Table

21 lbs | 14"H x 36"W x 18"D | PCT
\$399



Utility Stool

19 lbs | 19"H x 21"W x 13"D | US
\$209



Mission Foot Stool

14 lbs | 13"H x 18"W x 14"D | MSFS
\$199



Prairie End Table

13 lbs | 18"H x 18"W x 18"D | PET
\$239



16" Foot Stool

14 lbs | 14"H x 17"W x 16"D | FS
\$159



Step Stool

6 lbs | 8"H x 14"W x 10"D | SS8
\$129

ACCESSORIES

ADAPTABLE SPACES

Our folding chairs, side tables, and cornhole boards are designed for commercial environments. Easy to deploy, easy to store, and built to support flexible layouts for events, overflow seating, and shared outdoor spaces.

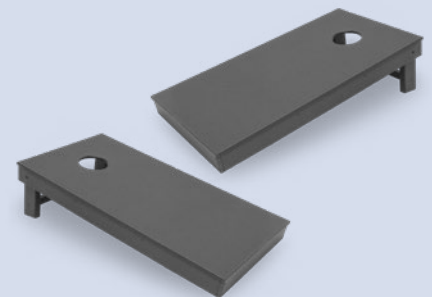


Folding Chair

25 lbs | 39"H x 23"W x 29"D | FC
\$399

Folding Side Table

19 lbs | 25"H x 20"W x 14"D | FST
\$239



Cornhole Game Boards

36 lbs | 4"H x 24"W x 48"D | CGB
Set of two game boards. Bags not included.
\$599

FOR YOUR FURRY FAMILY





**Elevated Pet Bed With
19" x 24" Cushion**

22 lbs | 11"H x 20"W x 26"D | EPBD-1924

\$309



**Elevated Pet Bed With
21" x 36" Cushion**

32 lbs | 11"H x 22"W x 38"D | EPBD-2136

\$359



**Elevated Pet Bed With
24" x 42" Cushion**

40 lbs | 11"H x 25"W x 44"D | EPBD-2442

\$409



**4" High Elevated Pet Feeder
With 2 Small Bowls**

5 lbs | 4"H x 18"W x 10"D | EPFD-4

\$129

Cushion Colors

Gunmetal

Hazelnut

Brown



8" High Elevated Pet Feeder | Sandtone | EPFD-8

19x24 Elevated Pet Bed with Cushion | Weathered Wood | Brown | EPBD-1924



**8" High Elevated Pet Feeder
With 2 Small Bowls**

8 lbs | 8"H x 18"W x 10"D | EPFD-8

\$139



**12" High Elevated Pet Feeder
With 2 Medium Bowls**

11 lbs | 12"H x 24"W x 12"D | EPFD-12

\$149



**16" High Elevated Pet Feeder
With 2 Large Bowls**

13 lbs | 16"H x 24"W x 12"D | EPFD-16

\$159

PET

ULTIMATE COVERAGE



Counter 38x88 Oval Framed Table | Sandtone | CNOPFT3888 | P. 25
Studio Counter Swivel-Flex Chair | Sandtone | CNSTC-SWRK | P. 13

Counter Height 60" Backless Bench | Sandtone | CNBB60F | P. 78
8x10 Rectangular Umbrella | Linen | Carbon | P. 95

UMBRELLAS

Frankford® umbrellas uses 9 oz. awning grade, 100% solution-dyed acrylic fabric that is waterproof, mold and mildew resistant, and easy to clean. Frankford® umbrellas have been tested successfully in extreme weather and winds up to 40 MPH, however, we strongly recommend closing your umbrella when not in use or when sustained winds exceed 25 MPH.

WARRANTY

7 Year Warranty

Marine-Grade Acrylic Fabrics

3 Year Warranty

Crank & Auto Tilt Mechanisms
Frame Structure

2 Year Warranty

Powder Coat Finishes
on Aluminum Mast

1 Year Warranty

Umbrella Bases

STEP 1

CHOOSE A SHAPE & SIZE



7.5' Square

\$829



7.5' Octagon

\$649



9' Octagon

\$699



11' Octagon

\$799



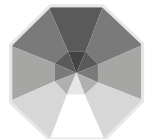
8' x 10'
Rectangle

\$1,199



10' Square
Cantilever

\$3,899



13' Octagon
Cantilever

\$3,899

*Cantilever only available with brushed silver pole

STEP 2

CHOOSE A POLE COLOR



UMBRELLA

STEP 3

CHOOSE A BASE & FINISH COLOR



Requires 12 additional pavers.
(Not included)

Galvanized Steel Cantilever
Base With Wheels

80 lbs
6.5"H x 34"W x 34"D

\$1,299

*Only available in Silver Mist



Steel Plate Base

50 lbs
3"H x 20"Dia

\$289

*Other color options available



Premium Aluminum
Shell Base With Wheels

18" Stem | 150 lbs
3.5"H x 24"Dia

\$899

*Only available in Silver Mist

18" Stem | 100 lbs
3.5"H x 24"Dia

\$569

8" Stem | 100 lbs
3.5"H x 24"Dia

\$569

STEP 4

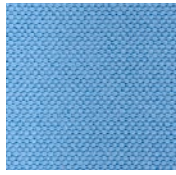
CHOOSE A COLOR



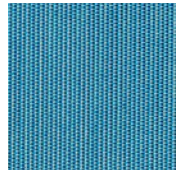
Captain Navy



Pacific Blue



Steel Blue



Sapphire



Turquoise



Pistachio



Forest Green



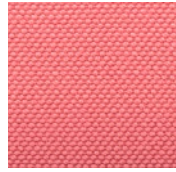
Burgundy



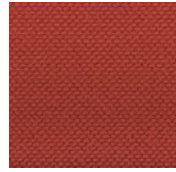
Vermillion



Logo red



Salmon



Chestnut



Orange



Pumpkin



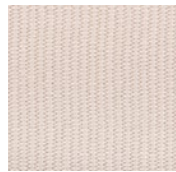
Yellow



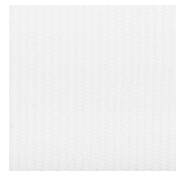
Brown



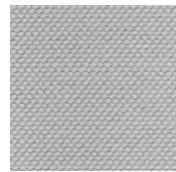
Beige



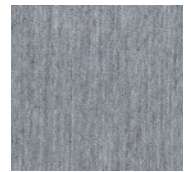
Linen



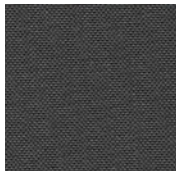
White



Cadet Gray



Titanium



Charcoal Gray



Black

ACCESSORIES

43" Pole Extender

For counter height tables

\$39

47" Pole Extender

For bar height tables

\$39

FEATURES



Auto Tilt

Crank to open tilt



Design your own umbrella in an immersive 3D space.



UMBRELLA

9" Octagon Umbrella | Yellow | Brushed Silver | P. 95

100lb Premium Aluminum Base with Wheels | Silver Mist | P. 95

SUPPORT THAT LASTS AS LONG AS OUR FURNITURE

Our furniture is built to last for decades, and our support follows the same philosophy. When you have a question, need a replacement part, or want help long after your purchase, you'll talk to real people who know our products and stand behind how they're made. No scripts. No handoffs. Just practical help when you need it.



LIMITED 15-YEAR WARRANTY

By the Yard was founded on the idea of building exceptionally durable, timeless outdoor furniture out of recycled plastic. When something is going to be around for a long time, it needs to be right. That's why we make our furniture to the highest of quality standards and pay attention to the little things that make it structurally sound and exceptionally comfortable. We believe in our product and stand behind our warranty. Once you purchase from By the Yard, you become a valued member of our family!

Limited 15-year Commercial Warranty on our Materials and Workmanship

By the Yard is committed to producing high quality furniture and will warrant its products to the original purchaser for 15 years from the original date of invoice. That means that you can count on our furniture not decaying, rotting, cracking, or splintering and that you will never need to paint, stain or seal your furniture.

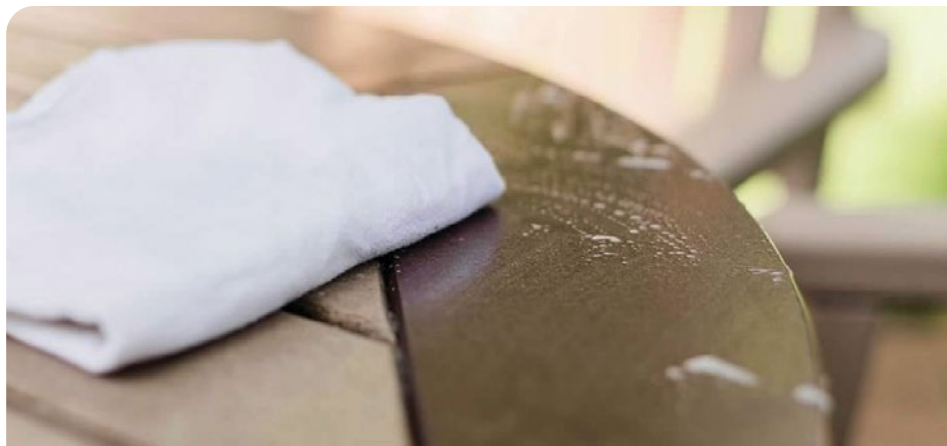
General Warranty Conditions & Exclusions

By the Yard products are made with UV stabilizers to minimize fading; however, upon prolonged exposure to the sun all colors may fade to some degree. It is also possible that the Xylan coated stainless steel hardware, swivel mechanisms, and flex mechanisms can show some rust over time in certain climates. While this is not ideal, it will not affect the integrity or the strength of the hardware.

See bytheyard.net for full warranty, terms and conditions.

ECO-FRIENDLY CLEANING TIPS

At By the Yard we clean our furniture by simply using soap and water on a regular basis...and we recommend that you do the same. A pressure washer on the "fan" setting can be used if necessary (especially on white furniture) but be very careful not to get closer than 24 inches! Any non-abrasive cleaner can also be used, including bleach to sanitize or disinfect.



DELIVERY SERVICE COMPARISON

Service Type	What You Get	Best For	Key Benefits
Carton Delivery	Furniture shipped in protective cartons	Properties with on-site maintenance or facilities teams	Most cost-effective; flexible assembly timing; easy to store until installation
Standard Delivery	Assembled delivery within local delivery zones	Commercial sites with receiving areas or staff to place items in a secure area	Straightforward and efficient; ideal for bulk orders; keeps freight costs low
Assembled Delivery	Furniture arrives fully assembled	Communities or businesses needing quick setup	Saves time and labor; ready to place immediately; reduces assembly errors
White Glove Delivery	Full-service delivery with placement and debris removal	Turnkey projects needing a polished presentation	Hassle-free installation; professional placement; debris removal; premium experience



All orders will ship F.O.B. factory unless otherwise noted and returns may be subject to a restocking charge. The prices in this catalog are based on current raw material costs and are subject to change without notice. All photos, illustrations, colors, dimensions & specifications are based on latest product information. By the Yard Inc. reserves the right to change or modify any product offering or specification at any time without notification. Any variation to color may be due to the printing process. All products are subject to availability. **BTY | 2026**



By the Yard

MAINTENANCE-FREE
OUTDOOR FURNITURE



Scan the QR code to find a showroom near you.

Questions? Contact commercialsales@bytheyard.net

Shop online at bytheyard.net

Contact us at 952-219-7070



Visit one of our showrooms in Jordan MN, Maple Grove MN, Woodbury MN, Oconomowoc WI, or Frisco TX.